

TEKLA BASECAMP

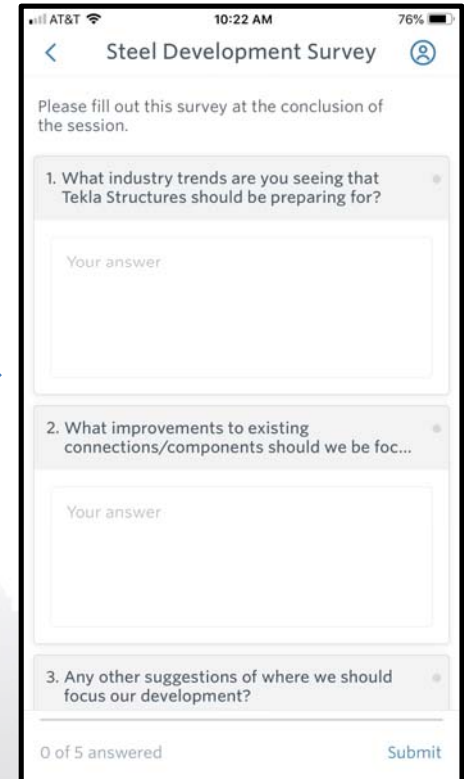
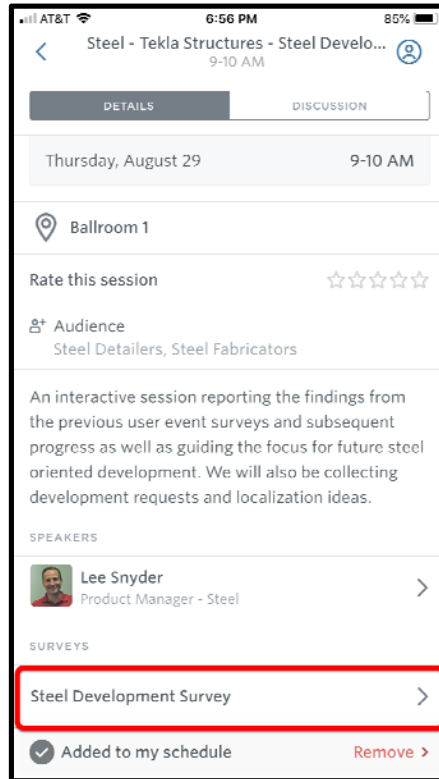
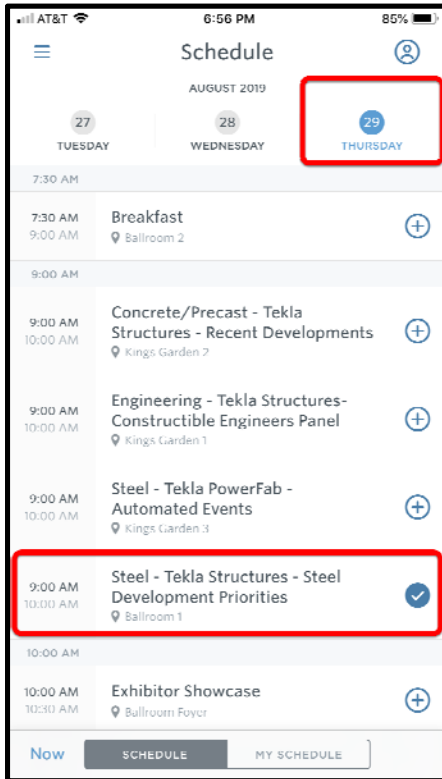
AUG. 27 - 29

2
0
1
9

Recent Steel Development
Lee Snyder – Product Manager



Feedback Survey



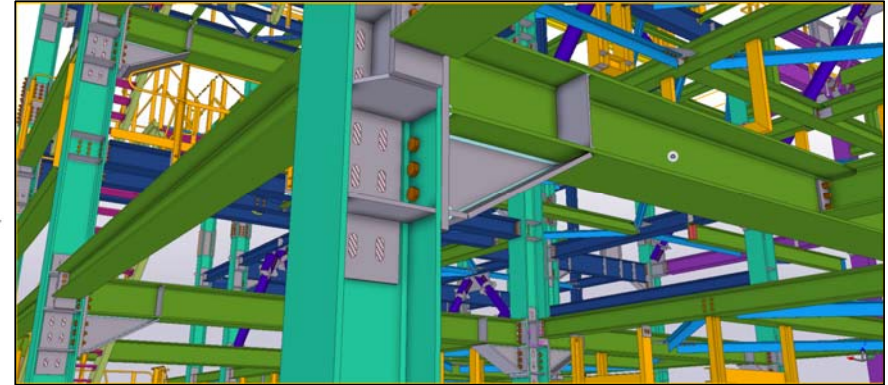
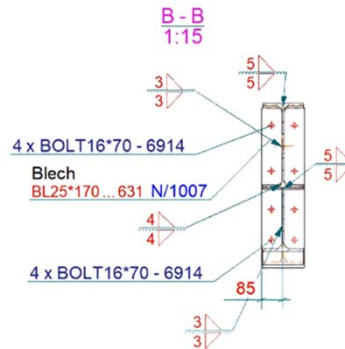
TEKLA VERSIONS & EVOLUTION



Tekla Version 2018 Main Features

Modeling

- Point Cloud Support
- Improvements to bent plate
- Spiral beam
- Welding
- Direct X Better support for rendering

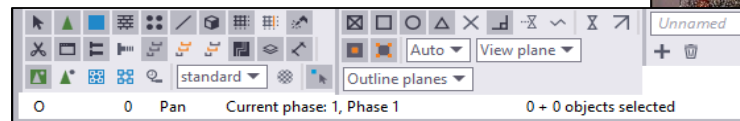


User Interface

- User Interface renewed and improved. Added to modeling side a customizable property pane with possible to visualize custom properties
- Usability enhancements, including snapping improvements

Drawings

- Faster and easier to use drawings, including updated printing, new drawing content manager, new automatic and easier manual mark placement
- Speed improvements
- Interoperability
- Export – import
- Enhanced API



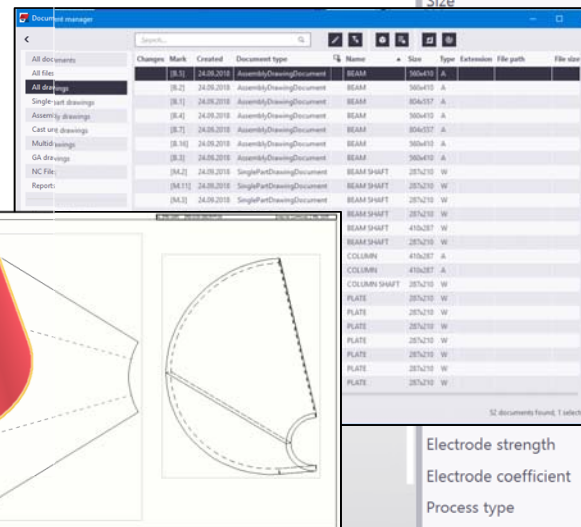
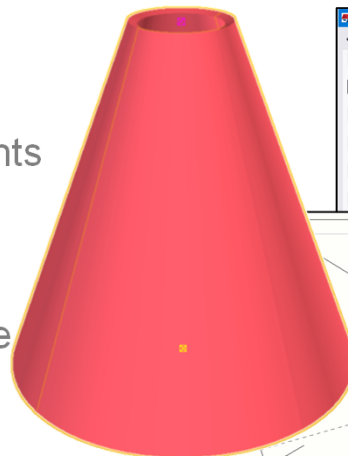
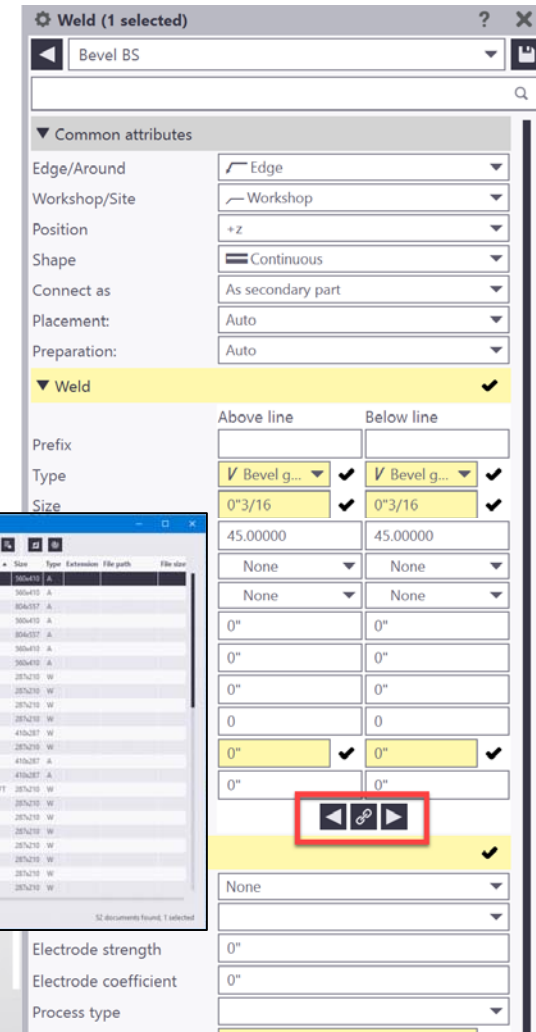
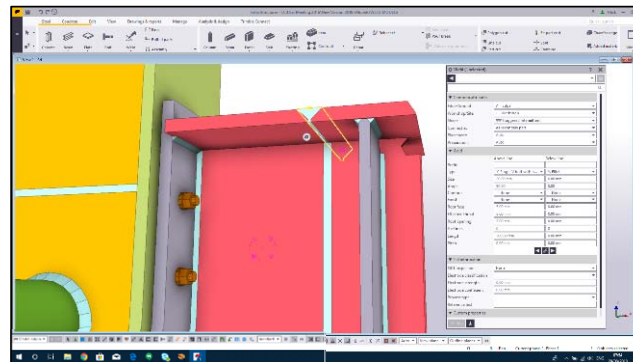
Tekla Version 2018i Main Points

Model productivity

- Welding (Direct Modification)
- Complex plate work (new bend types)
- Cone from plates

Documentation workflow

- New Document Manager
- Additional drawing improvements
- Curved sections
- Unfolding options
- Improved workflow with Trimble Connect



Enhanced document management and collaboration

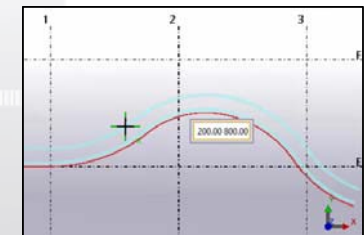
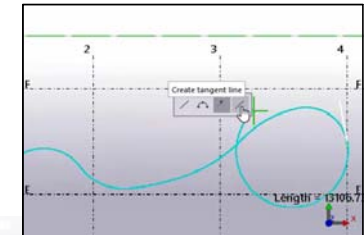
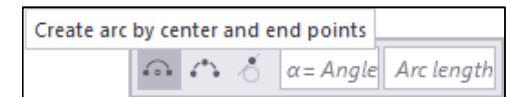
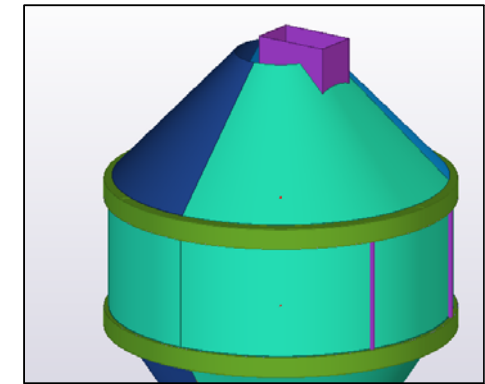
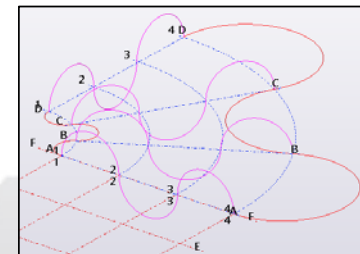
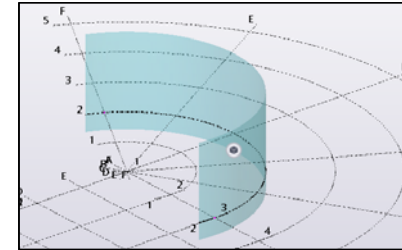
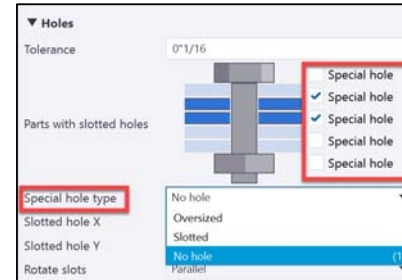
Tekla Version 2019 Main Features

Modeling

- Complex geometry:
- Stand alone bends for cones and pipes, boundary controls
- Construction objects: arcs, poly-curve, offset, real curved grids
- Bolts: “no hole” for pre-punched parts, as built conditions, screws, field holes
- Welding: length calculation corrected, cross-use of weld leg length and throat thickness with different standards, weld marks support special characters.

Drawings & Documents

- Faster drawings clean-up with clone selected objects is introduced on GAs
- Complex plate work: associativity for unfolded
- Cont. cloning improvements: view alignment to center of gravity, etc
- Easier layout editing: drag&drop, automatic anchoring
- Easier clean-up and checking with customizable content Manager, incl. connections, zoom to selected
- Additional drawing improvements: Drag annotations with 1 click, align view label



TEKLA STRUCTURES 2019i



Tekla Version 2019i Main Features

Model productivity and usability

- Updates to property pane
- Snapping improvements
- Search within model
- View Improvements
- Lofted Plate

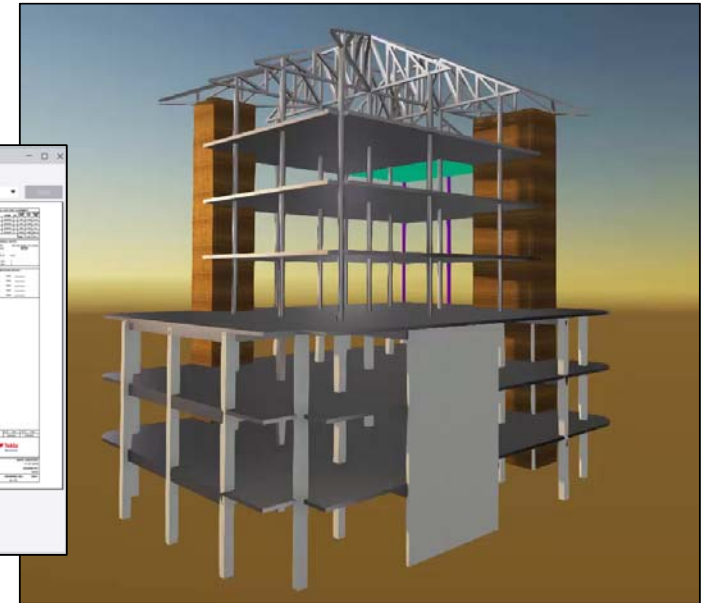
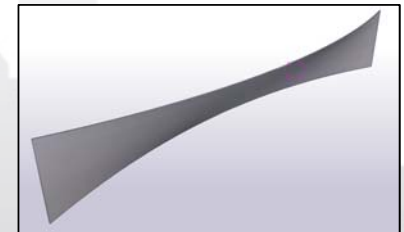
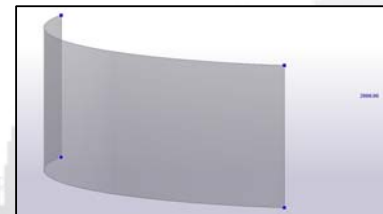
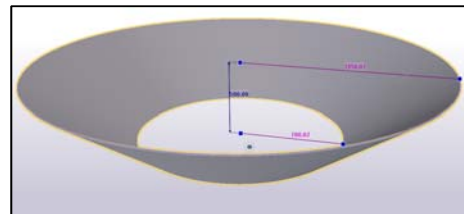
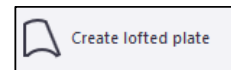
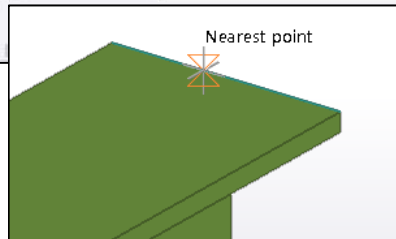
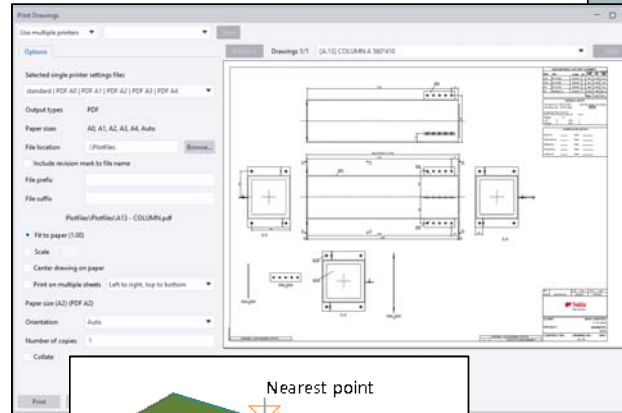
Collaboration

- New visualizer
- New DWG and DGN export options
- IFC conversion

Documentation workflow

- Print to multiple Printers
- Drawing view frame hidden
- New section view settings

Over 1000 fixes



MODEL PRODUCTIVITY



Updates to the property pane

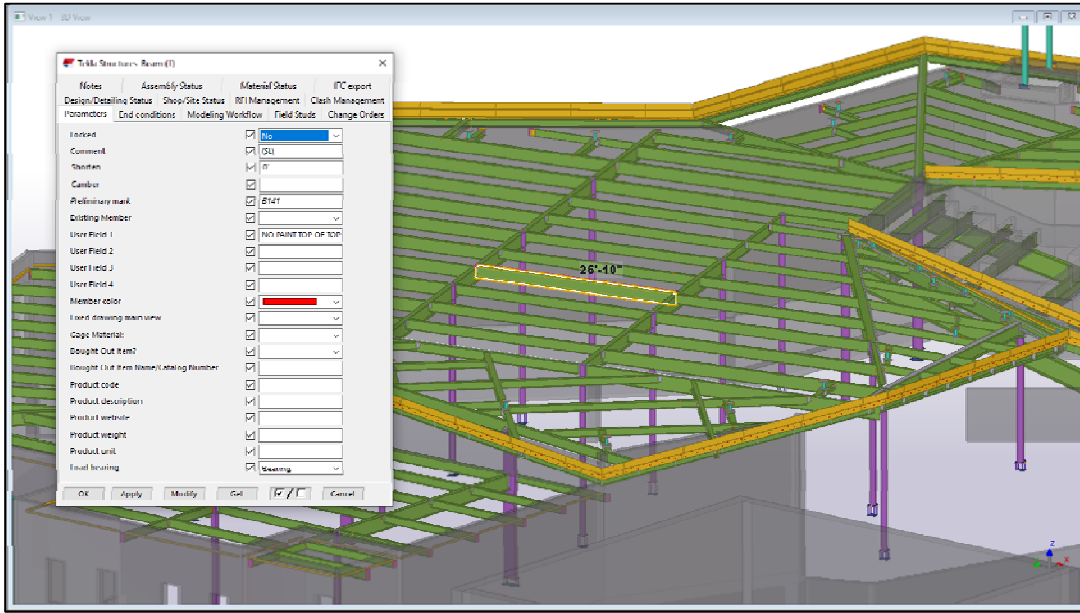
Updates to the property pane, UDAs, and to the Property pane editor

- Tekla Structures 2019i introduces improvements to the property pane control element
- Modifying and viewing of user-defined attributes (UDAs) is now simple and straightforward.

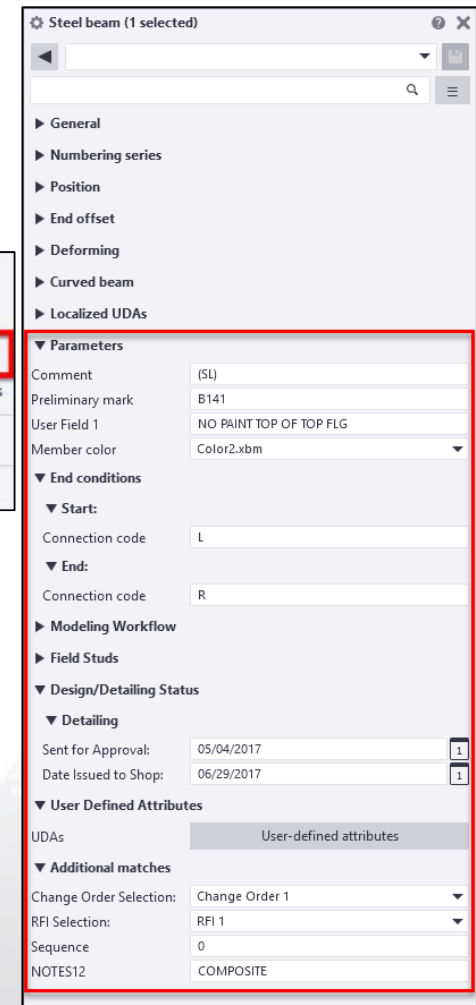
The screenshot shows the 'Steel beam (1 selected)' property pane. It is divided into several sections:

- General**: Includes 'Numbering series', 'Position', and 'End offset'.
- Parameters**: A red box highlights this section, containing fields for 'Comment' (with a dropdown), 'Preliminary mark' (B141), 'User Field 1' through 'User Field 4', 'Member color' (Color2.xbm), 'Fixed drawing main view', 'Bought Out Item?', 'Bought Out Item Name/...', 'Product code', 'Product description', 'Product website', 'Product weight', 'Product unit', and 'Load bearing' (Bearing).
- Modeling Workflow**: Includes 'Design/Detailing Status'.
- Design**: A red box highlights this section, containing 'Detailing' fields: 'Sent for Approval' (05/04/2017), 'Approval Date', 'Approved By', 'Planned Detailing Start', 'Planned Detailing End', 'Actual Detailing Start', 'Actual Detailing End', 'Detailing Status', and 'Date Issued to Shop' (06/29/2017).
- User Defined Attributes**: Includes a 'UDAs' section with a 'User-defined attributes' button and a 'Modify' button.

Updates to the property pane



- Expand all
- Collapse all
- Show properties that have a value
- Show properties based on visibility settings
- Set default values automatically
- Customize...



- Only populated UDA's will display for selected model object(s)

Easy view and edit of any UDA on property pane window

Tekla Structures Column (1)

IFC export Company Settings Tekla Structural Designer Fastrak Import

Parameters Workflow End conditions Analysis Structural information

DESIGN

Checked by	<input checked="" type="checkbox"/> Mick	Check date	<input checked="" type="checkbox"/>
Design comment	<input checked="" type="checkbox"/>	Planned start	<input checked="" type="checkbox"/>
Design assigned to	<input checked="" type="checkbox"/>	Planned end	<input checked="" type="checkbox"/>
Design code	<input checked="" type="checkbox"/>	Actual start	<input checked="" type="checkbox"/>
Design status	<input checked="" type="checkbox"/>	Actual end	<input checked="" type="checkbox"/>

FABRICATION

Fabrication code	<input checked="" type="checkbox"/> 001	Fabrication comment	<input checked="" type="checkbox"/>
Delivery number	<input checked="" type="checkbox"/>	Planned start	<input checked="" type="checkbox"/>
Package number	<input checked="" type="checkbox"/>	Planned end	<input checked="" type="checkbox"/>
Shipment number	<input checked="" type="checkbox"/>	Actual start	<input checked="" type="checkbox"/>
Fabrication status	<input checked="" type="checkbox"/>	Actual end	<input checked="" type="checkbox"/>

ERECTION

Erection code	<input checked="" type="checkbox"/> Planned	Planned start	<input checked="" type="checkbox"/>
Erection Comment	<input checked="" type="checkbox"/>	Planned end	<input checked="" type="checkbox"/>
Site Status	<input checked="" type="checkbox"/>	Actual start	<input checked="" type="checkbox"/>
CIP status	<input checked="" type="checkbox"/>	Actual end	<input checked="" type="checkbox"/>

OK Apply Modify Get / Cancel

Steel column (1 selected)

▼ General

Name: COLUMN
Profile: SHS500*10
Material: S235JR
Class: 7

▼ Numbering series

Part numbering: P 1
Assembly numbering: A 1

▼ Position

Vertical: Middle 0.00 mm
Rotation: Front 0.00
Horizontal: Right 0.00 mm
Top: 8000.00 mm
Bottom: 4000.00 mm

▼ Deforming

Warping: 0.00 0.00
Cambering: 0.00 mm
Shortening: 0.00 mm

▼ Tekla Structural Designer

Mark: C83 - 2
Integration Status: New
TSD Member Type: GENERAL_COLUMN

▼ More

UDAs: User-defined attributes

▼ Additional matches

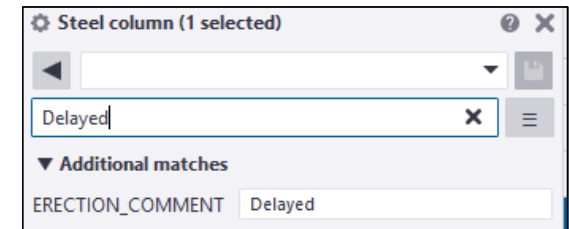
DESIGN_CHECKED_BY: Mick
ERECTION_CODE: Planned
FABRICATION_CODE: 001

Modify

Updates to the property pane

Improved search in the property pane

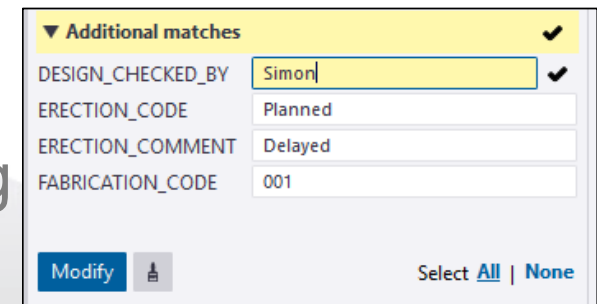
- Search in the property pane has been improved. Now the search finds all the properties and user-define attributes (UDAs) that are available for the object



Type in any field into search and display only specific results

Improvements in copying of properties

- You can now press **Enter** to finish the copying of properties instead of clicking the Modify button.



Press Enter same as modify

Set Default Values Automatically

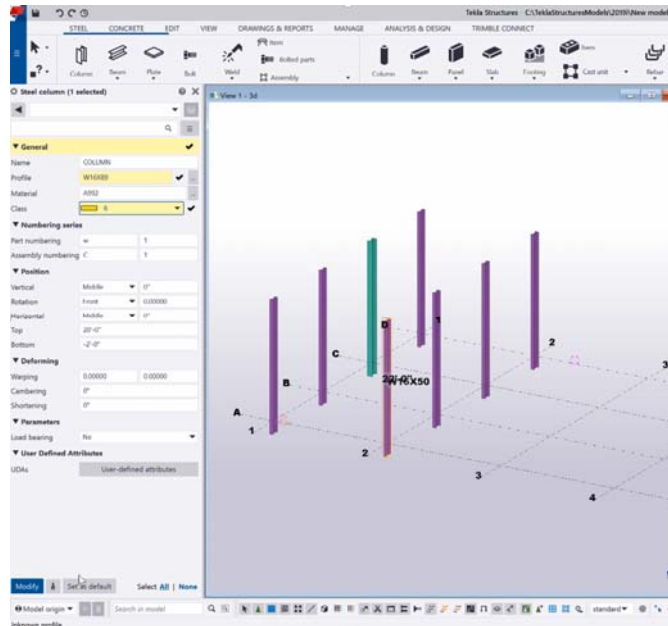
- Instead of “auto-apply” you can choose when to set the default values

Expand all
Collapse all

✓ Show properties that have a value
Show properties based on visibility settings

✓ Set default values automatically

Customize...

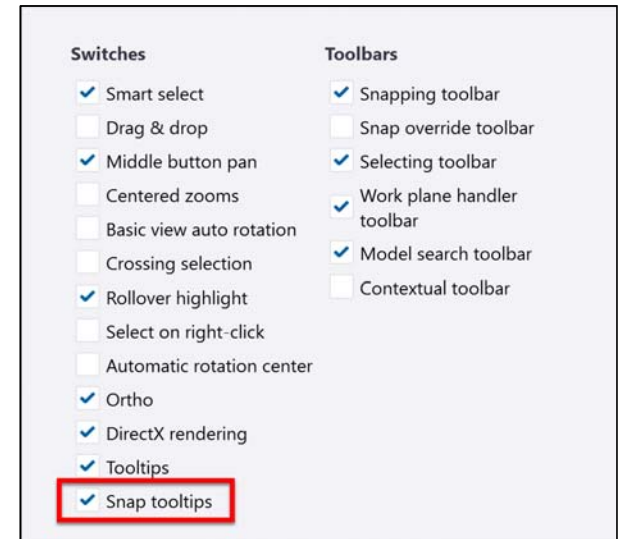
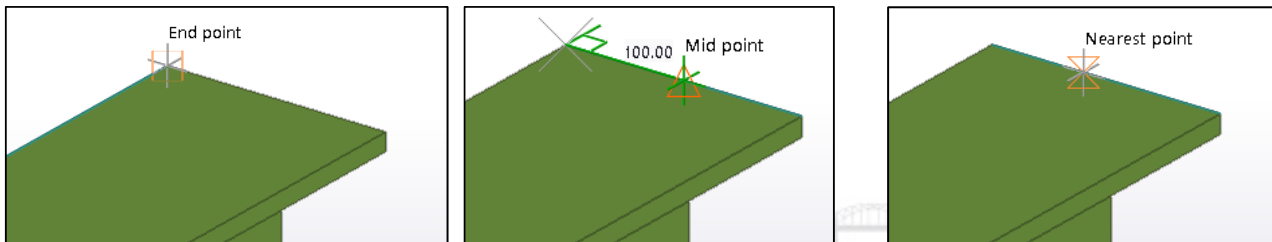


A detailed view of the 'Steel column (1 selected)' properties panel. The panel is titled 'Steel column (1 selected)' and has a search bar with 'standard' entered. It is divided into several sections: 'General' (Name: COLUMN, Profile: W16X50, Material: A992, Class: 5), 'Numbering series' (Part numbering: w, 1; Assembly numbering: C, 1), 'Position' (Vertical: Middle, 0"; Rotation: Front, 0.00000; Horizontal: Middle, 0"; Top: 20'-0"; Bottom: -2'-0"), 'Deforming' (Warping: 0.00000, 0.00000; Cambering: 0"; Shortening: 0"), 'Parameters' (Load bearing: No), and 'User Defined Attributes' (UDAs: User-defined attributes). At the bottom, there are buttons for 'Modify', 'Set as default', and 'Select All | None'. The 'Set as default' button is highlighted with a red box.

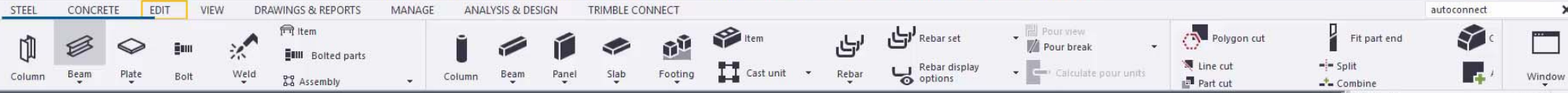
Snapping improvements

Snap tooltips for snap points

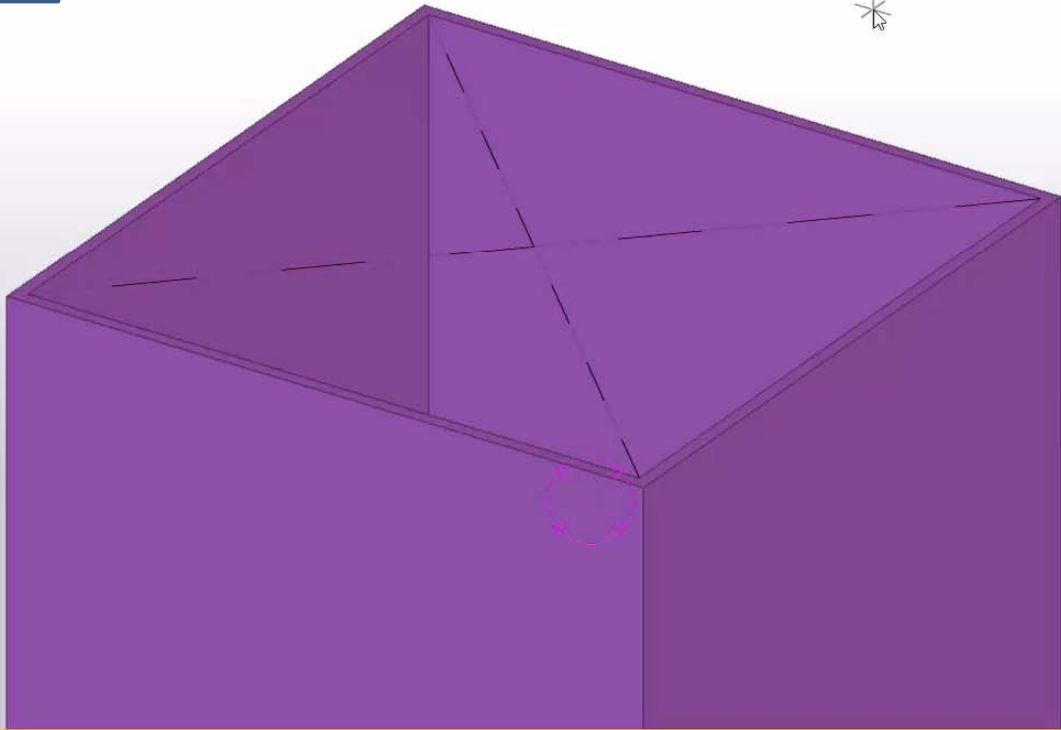
- Now when you start a command that requires picking points and you move the mouse pointer over objects in the model, Tekla Structures displays a snap tooltip that shows the name of the snap point



To show or hide these snap tooltips, click File > Settings and select the Snap tooltips check box.



Snap tooltips for snap points



Steel beam

▼ General

Nar: BEAM
Prof: IPE180
Mat: S275
Fini:
Clas: 3

▼ Numbering series

Part: P 1
Ass: A 1

▼ Position

On: Middle 0.00 mm
Rot: Top 0.00
At c: Behind 0.00 mm

▼ End offset

Start	End
Dx: 0.00 mm	0.00 mm
Dy: 0.00 mm	0.00 mm
Dz: 0.00 mm	0.00 mm

▼ Deforming

War: 0.00 0.00
Can: 0.00 mm
Sho: 0.00 mm

▼ Curved beam

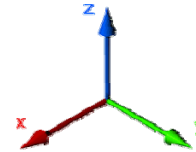
Plar: XY plane
Rad: 0.00 mm
Nur: 1

▼ More

UD: User-defined attributes

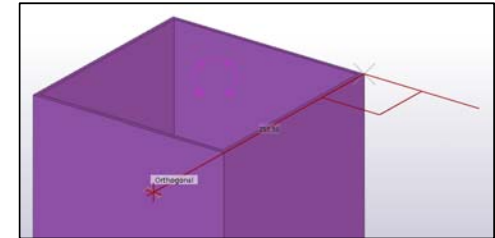
Modify

Snapping improvements

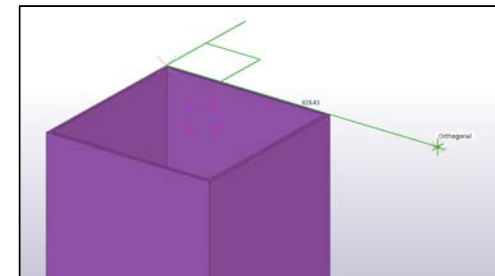


Snapping color changes

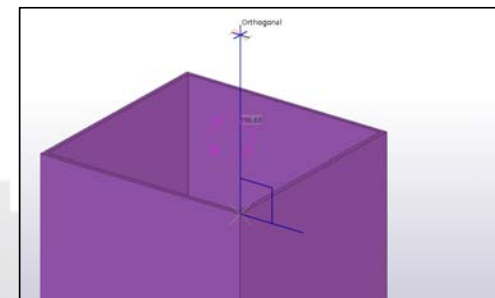
- When snapping to Ortho the color of the snap and line now matches the axis
 - red for x-axis
 - green for y-axis
 - blue for z-axis.
- For any other direction the line between the last point picked and the snap point and the cursor is gray.



red indicates x-axis

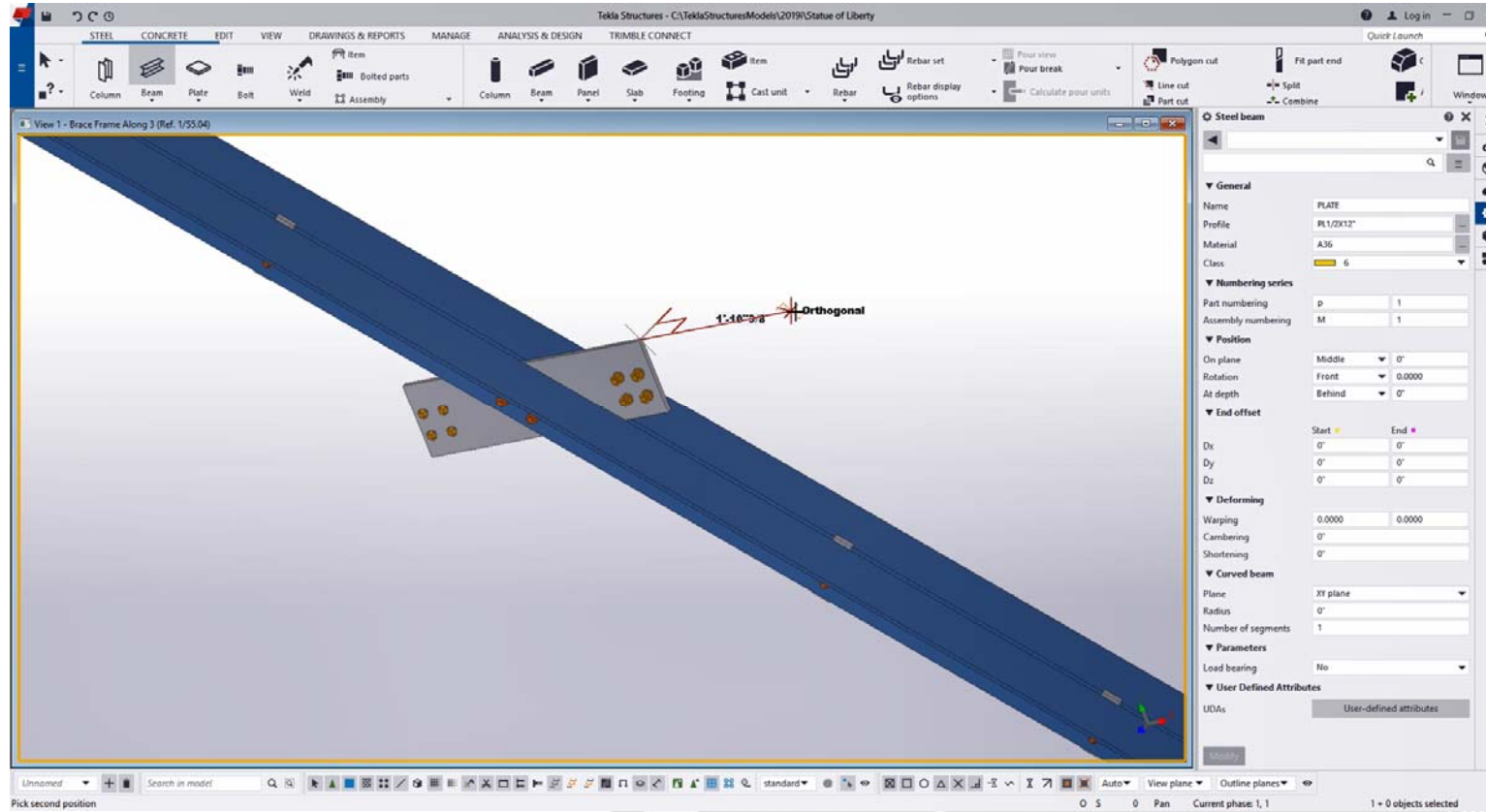


green indicates y-axis



blue indicates z-axis

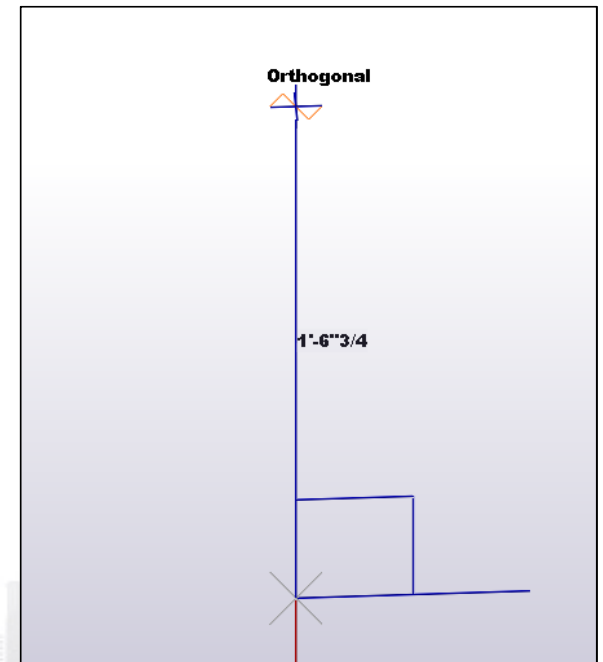
Snapping Improvements



Snapping improvements

Orthogonal snapping now has lower priority among the snap points

- The behaviour of the Ortho tool has been changed. If Tekla Structures detects any other possible snap points other than an orthogonal point, Tekla Structures uses the found snap point
- If there are no other possible snap points found, then Tekla Structures uses the orthogonal snap point.



Search within the model

Search Toolbar

- Using the Model Search Toolbar you can now quickly search for objects:
 - in the entire model or
 - within the selected model objects
- Search for model objects using:
 - Name
 - Profile
 - Material
 - Reinforcement grade
 - Position number
 - Component running number
 - GUID

Search using name, profile, material, or position number of model objects. You can use wildcards "", *, [], or ?.

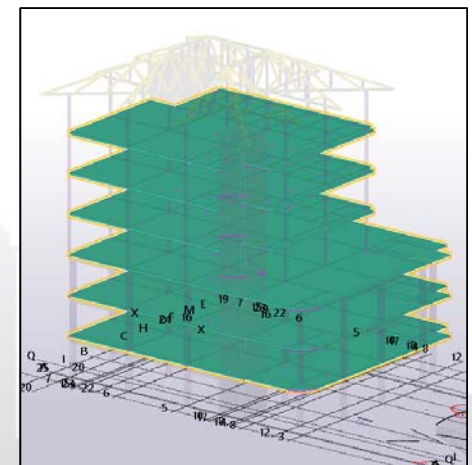
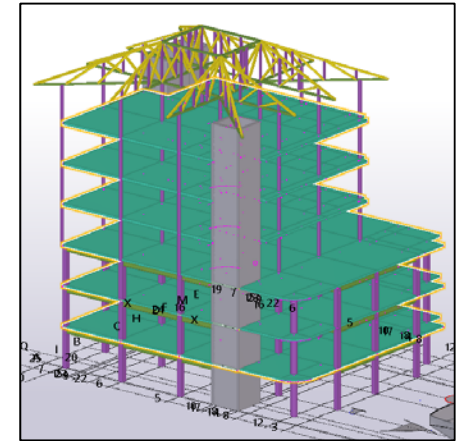
Search in model

Search for model objects using name, profile, material, reinforcement grade, position number, component running number, or GUID.

Enter a search term in the box on the left, and then click this button or press **Enter**.

Tekla Structures selects the model objects that match the search criteria and shows the object properties in the property pane.

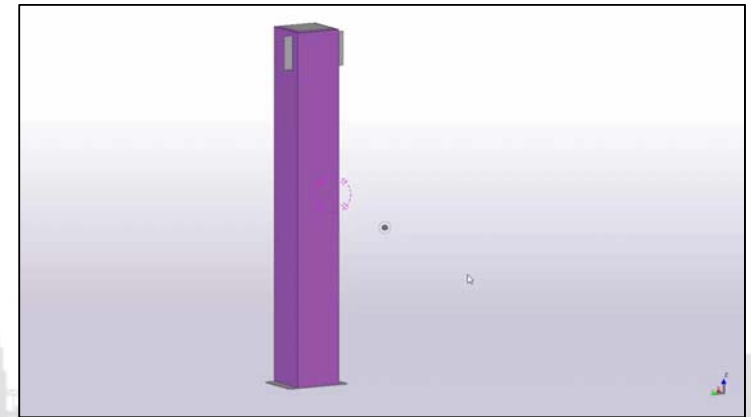
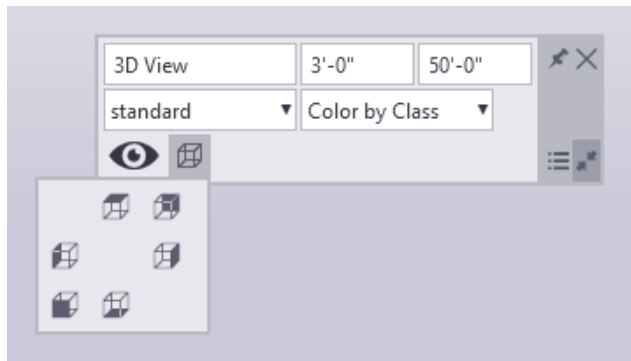
Press **Ctrl+F1** for more help on this.



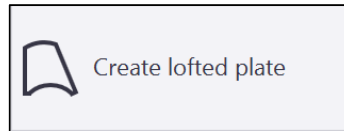
View improvements

View improvements

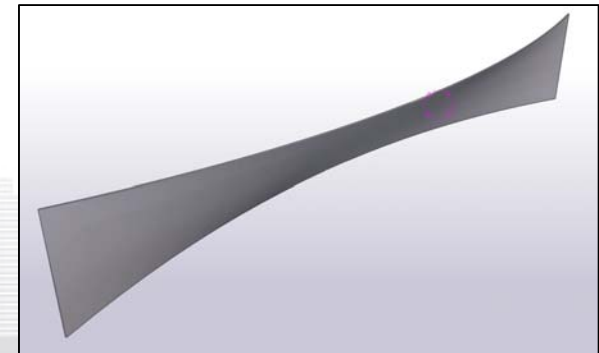
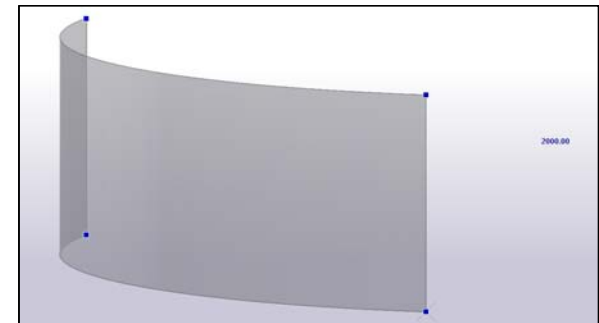
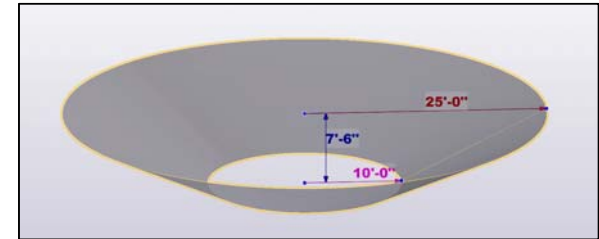
- Starting from Tekla Structures 2019i, you can now show model views, assemblies, and components at different pre-set view angles.



Lofted Plate



- Lofted Plate - Tekla Structures 2019i introduces new plate part type for steel
- Use lofted plates to model transitions , rolled plates and plates with double-curved form, warped plates for example.
- Create from construction object to construction object or Construction object to point



STEEL CONCRETE EDIT VIEW DRAWINGS & REPORTS MANAGE ANALYSIS & DESIGN TRIMBLE CONNECT

Column Beam Plate Bolt Weld Assembly Item Bolted parts

Column Beam Panel Slab Footing Cast unit Rebar Rebar set Rebar display options

Pour view Pour break Calculate pour units

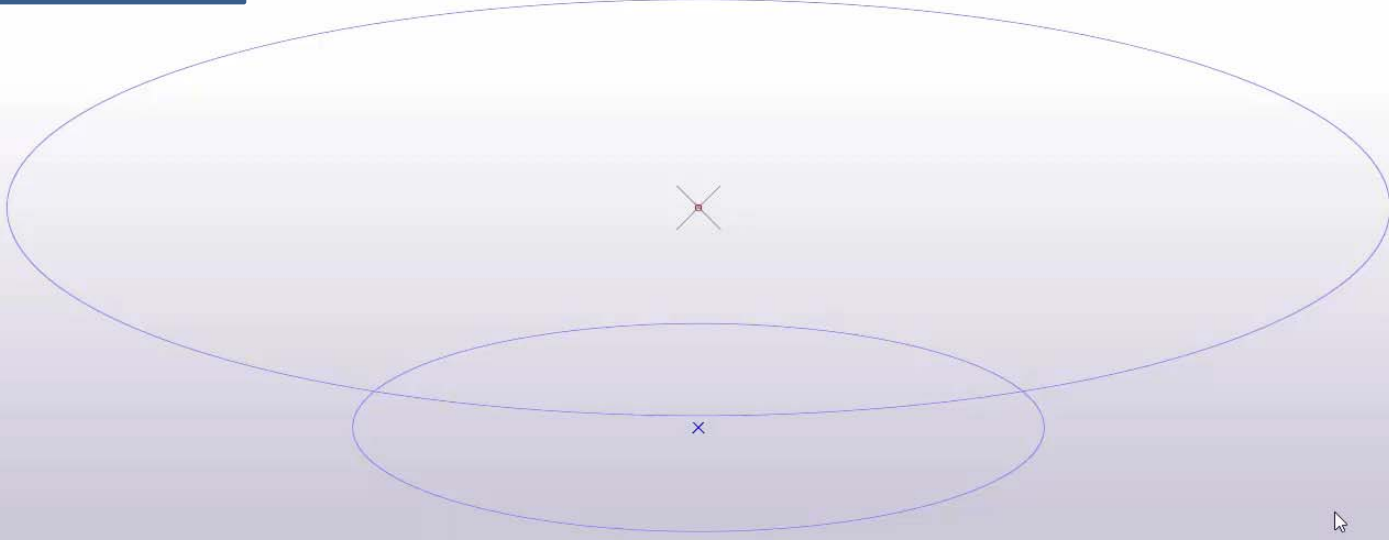
Polygon cut Line cut Part cut

Fit part end Split Combine

Quick Launch Window

Lofted Plate

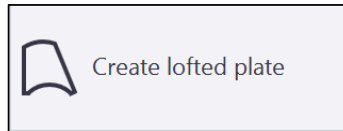
How it works



Properties

Modify

Lofted plate



Create the needed construction objects in the model.

The shape of the lofted part is based on the construction object shape.

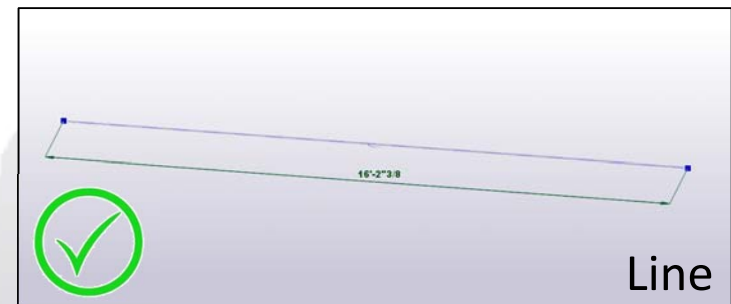
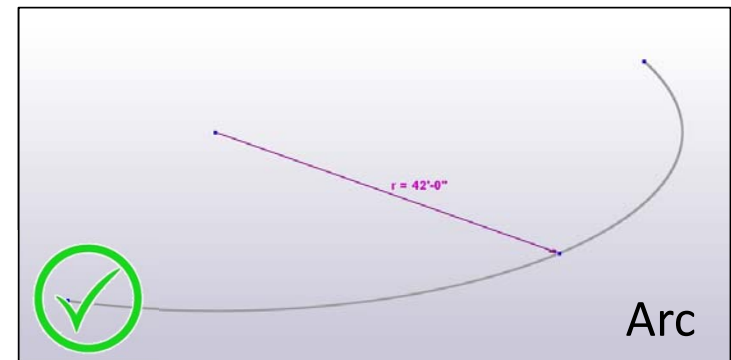
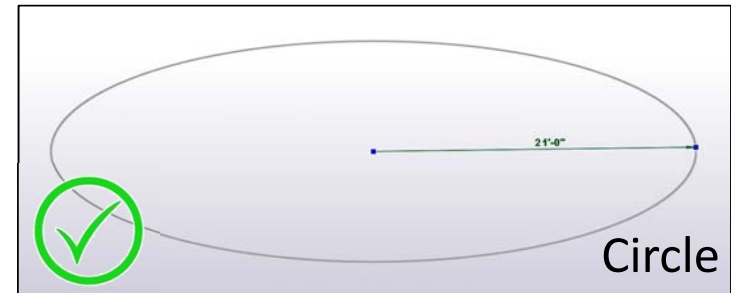
Supported

- Construction Circles
- Construction Arcs
- Construction Lines

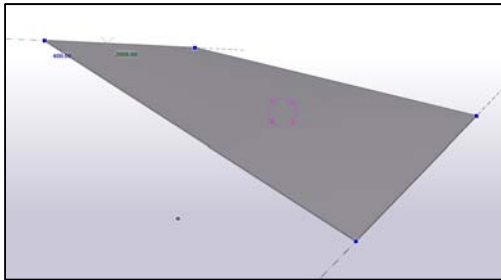
Not supported

- Construction Plane
- Construction Polycurve

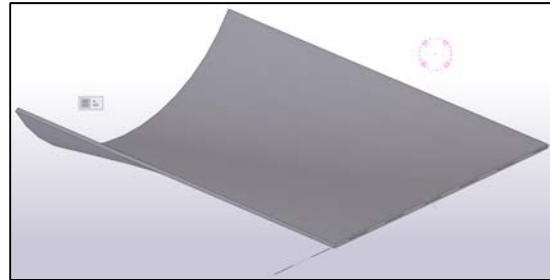
Construction object	
Line	✓
Plane	✗
Circle	✓
Arc	✓
Polycurve	✗



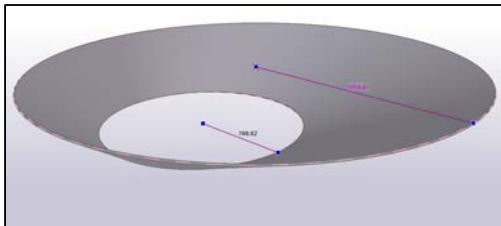
Lofted plate – Examples



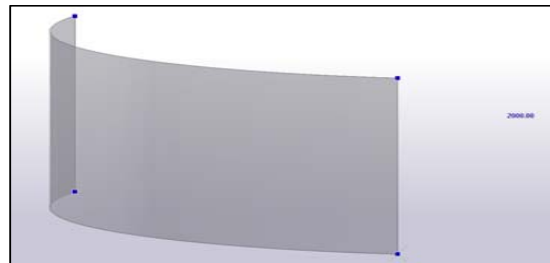
Construction Line to
Construction Line for
warped plates



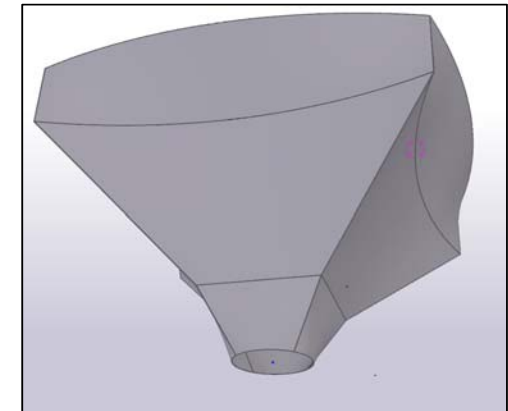
Construction Arc to
Construction Line for Chute's



Construction Circle to
Construction Circle for
Transitions



Construction Arc to Construction
Arc for curved plates



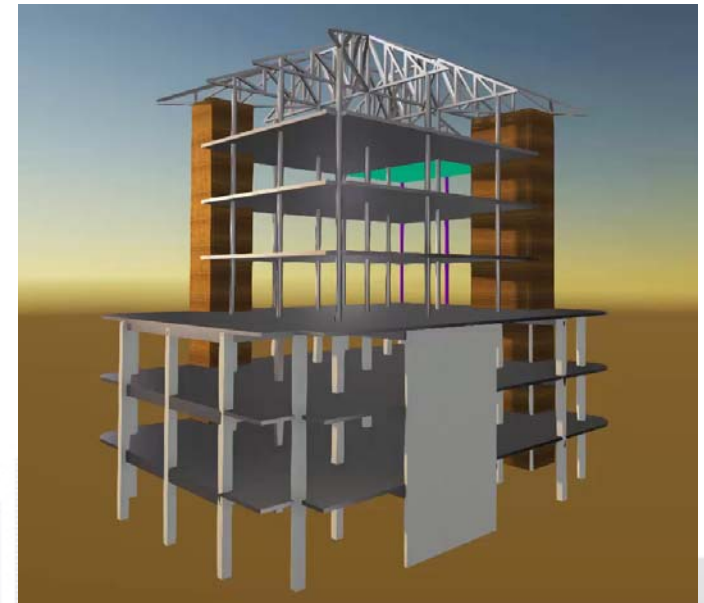
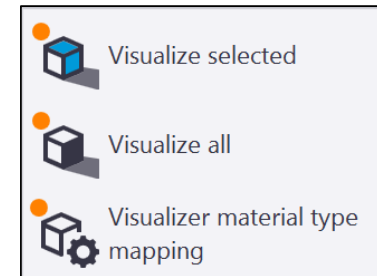
Visualizer

Visualizer is now available in Tekla Structures 2019i by default

Visualizer is a quick, easy shaded and rendered model viewer

- Save hi resolution images
- Set view points and play back as a fly through

Add a nice touch to your sales presentations and coordination meetings



Visualizer



TEKLA
BASECAMP

Visualizer Settings



Visualizer settings

NAME	TYPE
F2280	STEEL
A529-GR.50	STEEL
Formwork_Undefined	CONCRETE
GLASS	GLASS
C35	CONCRETE
WOOD	TIMBER
TIMBER	TIMBER
C60	CONCRETE
C55	

OK Cancel

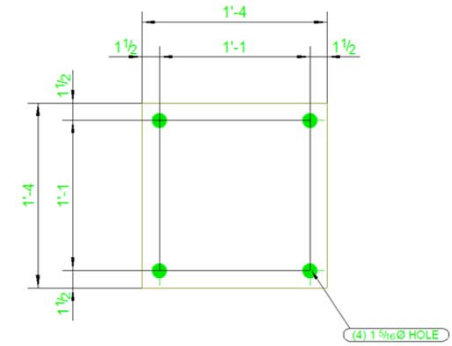
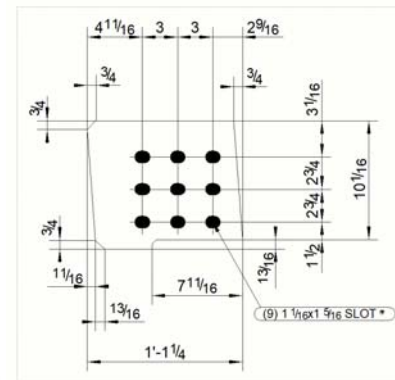
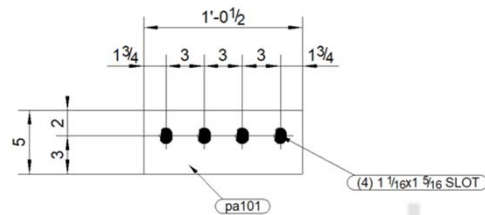
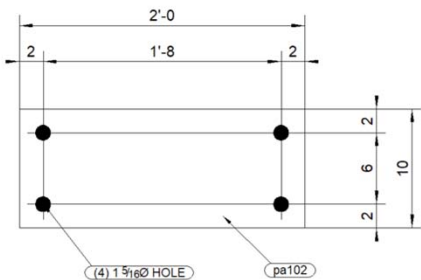
DOCUMENTATION WORKFLOW



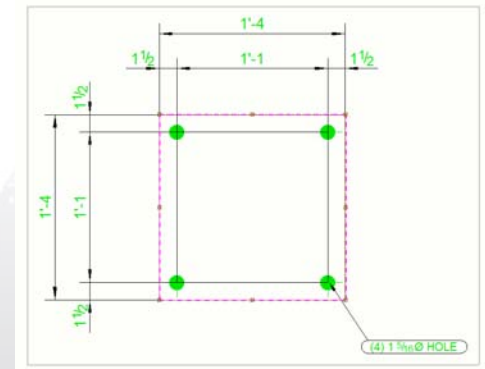
Improvements in drawings

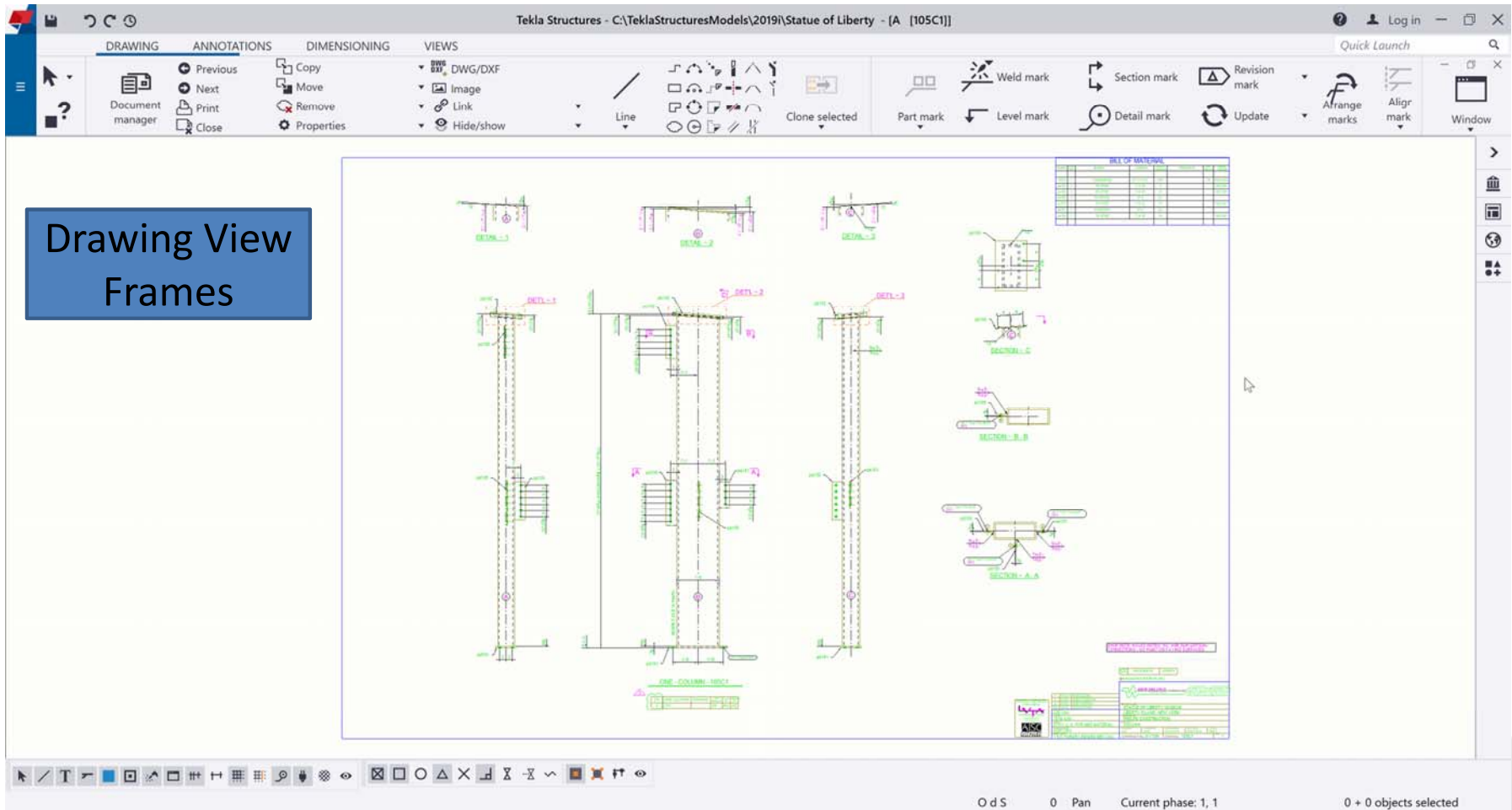
Drawing view frames now hidden

- View frames are now hidden until you move the cursor over the view. If you select a view, the drawing view frame remains solid



View frames are now hidden until you move the cursor over drawing view





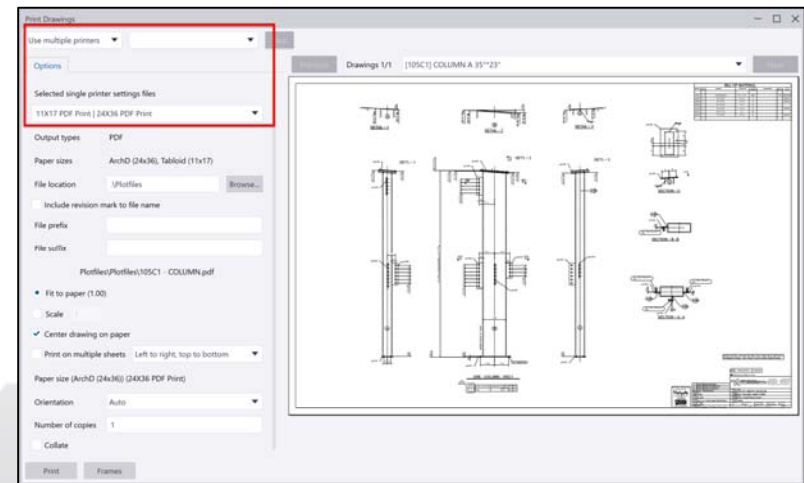
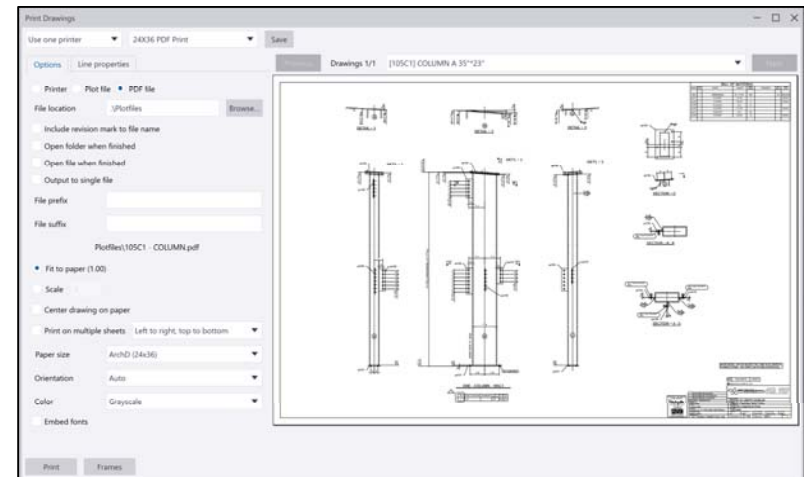
Drawing View
Frames

2019

Printing

Print to multiple printers

- You can now print to more than one printer based on the paper size of each selected drawing.
- Tekla Structures automatically selects the appropriate printer for each drawing



Print to multiple printers

New printing options

Print Drawings

Use one printer [Printer Name] Save

Options Line properties Previous Drawings 1/3 [pa622] Fittings W 8"×10"1/2 Next

Printer Plot file PDF file

File location: \Plotfiles Browse...
Plotfiles\pa622.pdf

Include revision mark to file name
 Open folder when finished
 Open file when finished
 Output to single file

File prefix: _____
File suffix: _____

Fit to paper
 Scale 1

Center drawing on paper

Print on multiple sheets Left to right, top to bottom

Paper size (Letter (8 1/2x11)): Auto
Orientation: Auto
Color: Grayscale

Embed fonts

Print Frames

Technical drawing showing dimensions: 2'-1", 1'-11 1/2", 1'-6", 8 1/8", 5 1/8", 8 1/8", 1 1/2".

MARK	SHAPE	LENGTH	STEEL GRADE	REMARKS
pa622	PL 1/4"x18"	2'-1"		

REV	DATE	DESCRIPTION
E	08/05/2019	ISSUED FOR FABRICATION
A	08/05/2019	ISSUED FOR ORDERING

PROJECT NAME	CONTRACTOR	CONTRACT NO.	LOT NO.
STATUE OF LIBERTY MUSEUM	PHILIPS CONSTRUCTION	S-1184	59471

DWG TITLE	DATE	SCALE	REV. NO.
PLATE	08/05/2019	pa622	0

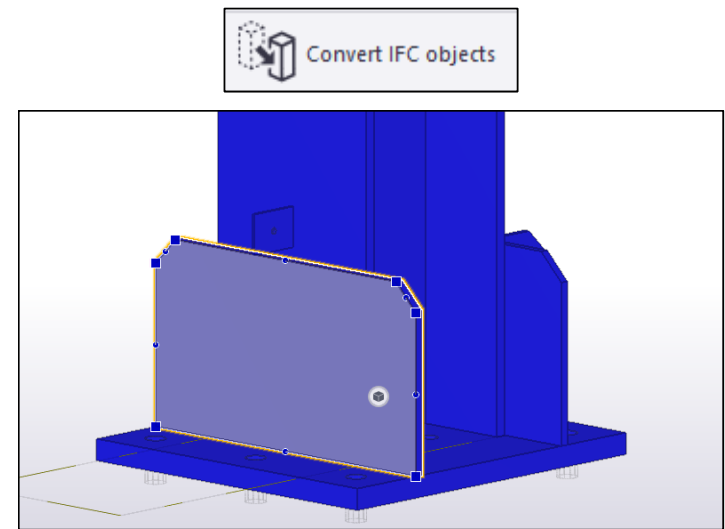
COLLABORATION



Interoperability improvements

IFC object conversion

- Steel contour plates now uses the prefix defined for plates as the prefix for Tekla Structures native plates. You can use prefixes that are supported by your environment



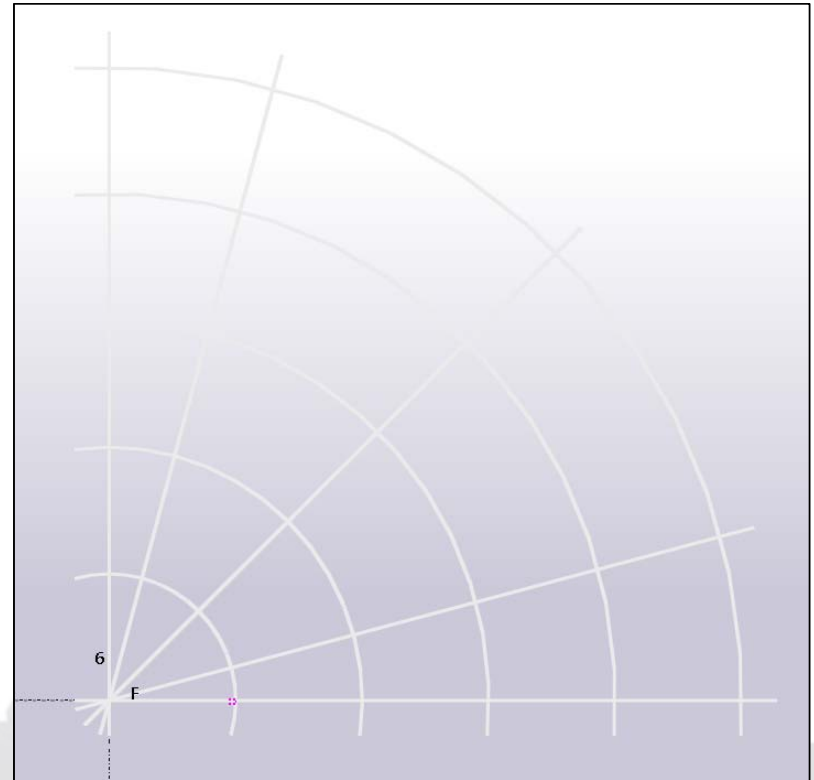
Status	Conversion status	Reference name	Reference mate...	Reference profile	External ID	Reference type	Native ID	Profile	Class	Conversion result	Type
Up-to-date	Conversion as e...	Steel plate	STEEL/S275-J2	FLAT40*650	19G9J3000YcZ4oCZ...	Arbitrary	871969	PL40	992	IFCDISCRETEACCE...	
Up-to-date	Conversion as e...	Steel plate	STEEL/S275-J2	FLAT40*650	19G9J3000YoZ4oCZ...	Arbitrary	864237	PL40	992	IFCDISCRETEACCE...	
Up-to-date	Conversion as e...	Steel plate	STEEL/S275-J2	FLAT40*650	19G9J3000ZYZ4oC...	Arbitrary	853156	PL40	992	IFCDISCRETEACCE...	
Up-to-date	Conversion as e...	Steel plate	STEEL/S275-J2	PLT16*300	19G9J3000SHZ4oC...	Arbitrary	885505	PLT16	992	IFCDISCRETEACCE...	
Up-to-date	Conversion as e...	Steel plate	STEEL/S275-J2	PLT16*300	19G9J3000SIJ4oCZ...	Arbitrary	885554	PLT16	992	IFCDISCRETEACCE...	
Up-to-date	Conversion as e...	Steel plate	STEEL/S275-J2	PLT16*350	19G9J3000YaJ4oCZ...	Arbitrary	871832	PLT16	992	IFCDISCRETEACCE...	
Up-to-date	Conversion as e...	Steel plate	STEEL/S275-J2	PLT16*350	19G9J3000Yb34oCZ...	Arbitrary	871877	PLT16	992	IFCDISCRETEACCE...	
Up-to-date	Conversion as e...	Steel plate	STEEL/S275-J2	PLT16*350	19G9J3000YmJ4oC...	Arbitrary	864100	PLT16	992	IFCDISCRETEACCE...	
Up-to-date	Conversion as e...	Steel plate	STEEL/S275-J2	PLT16*350	19G9J3000Yn34oCZ...	Arbitrary	864145	PLT16	992	IFCDISCRETEACCE...	
Up-to-date	Conversion as e...	Steel plate	STEEL/S275-J2	PLT16*350	19G9J3000ZWJ4oC...	Arbitrary	853057	PLT16	992	IFCDISCRETEACCE...	
Up-to-date	Conversion as e...	Steel plate	STEEL/S275-J2	PLT16*350	19G9J3000YV34oCZ...	Arbitrary	852111	PLT16	002	IFCDISCRETEACCE...	

Select objects in the model
 Get selected objects from model
 Zoom to selected

Interoperability Improvements

IFC2x3 export

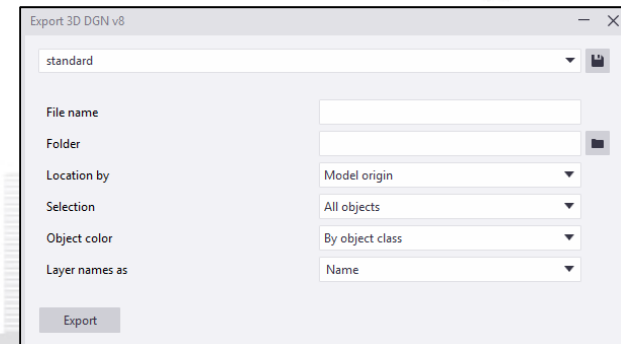
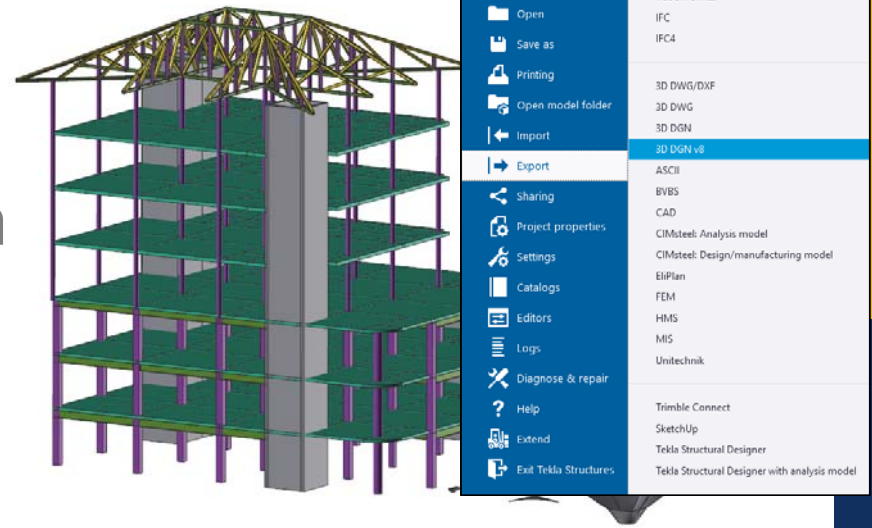
- You can now also export radial grids in the IFC2x3 export.
- The edge chamfers are omitted from the exported IFC model. This is to enable better interoperability with plant design systems.



Interoperability improvements

New 3D DGN export v8 format

- The 3D DGN export has been renewed for TS2019i.
- The new 3D DGN export now has the requested v8 format
- The new 3D DGN v8 uses Teigha libraries and has some new features:



Interoperability improvements

3D DWG export

- The 3D DWG export has been renewed
- The new 3D DWG uses Teigha libraries and has new export features:



FIXES



Fixes

2019i fixes

- Over 1000 fixes, including:
 - Steel components
 - Import, export, interoperability
 - Templates and reports
 - Drawings
 - Tekla Model Sharing
 - Modelling
 - Tools and components
 - Numbering
 - User interface

Defect number	Development area	Description
TSAC-2490	Steel components	In Full depth S (185) , the gap between the tab plate and the main part flanges is now correctly applied when the main part is a C or U profile.
TSAC-2467	Steel components	In Tube gusset (20) , the cut creation has been improved in cases when the gusset plate runs through the main part.
TSAC-2367	Steel components	In Full depth S (185) , the secondary part is now correctly set as the bolt main part.
TSAC-2359	Steel components	In U.S. Base plate (1047) , in some situations, two anchors were previously added to the same assembly. This has now been fixed.
TSAC-2349	Steel components	In Railings (577) , top rail part cut creation has been improved.
TSAC-2226	Steel components	In Hollow brace wraparound gusset (59) , the seal plate was not previously created when the weld length was set to be smaller than zero. This has now been fixed.
TSAC-857	Steel components	Seat type 5 (60) does not create an unwanted fitting anymore.
TSAC-846	Steel components	In Rebar hole , holes are now created correctly for inclined reinforcing bars with part cuts in steel columns, beams, and contour plates.
TSAC-569	Steel components	In Wall rails , when you set the bracket spacing to Maximum on the Brackets tab, the bracket spacing was not created correctly. This has now been fixed.
TSAC-311	Steel components	In Tube splice (6) , the creation of welds between the splice plates and the input parts has been improved.
TSAC-303	Steel components	In Stiffeners (1034) , the width and height of stiffeners is now correctly applied.
TSAC-270	Steel components	In Haunch (40) , weld 7 is now created correctly in situations where the haunch is created as a profile.
TTSD-24752	Organizer	In Organizer , the synchronization performance has been improved.
TTSD-26897	Import, export, interoperability	The bending radii of rebar hooks are now correctly exported to IFC4. Previously, the main rebar bending radii were applied to all bends including hook bends.
TTSD-26273	Import, export, interoperability	The data handling of reference models sometimes failed, and the Temp.tmp file remained in .\DataStorage\ref folder. As a result, saving of a multi user model froze Tekla Structures and it needed to be closed from Task Manager . Tekla Structures also froze in single user model. These have now been fixed.

Stacker - Steel Delivery Tool

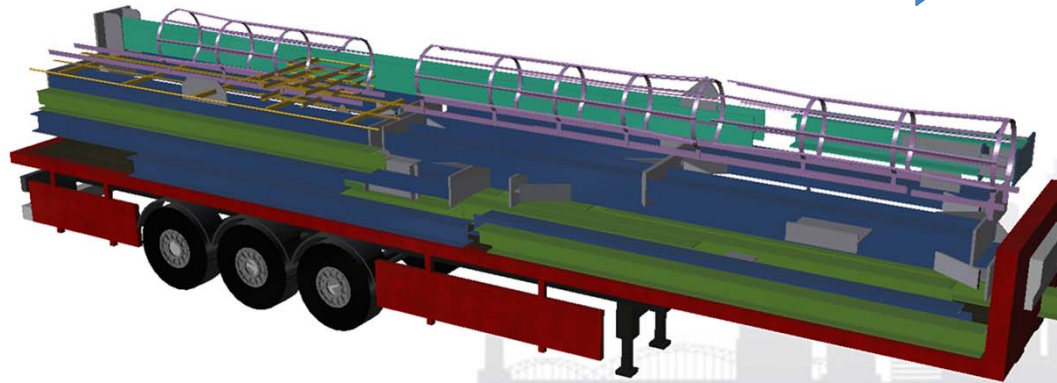
- Now available for the following configurations:
 - Full Detailing
 - **Steel Detailing**
 - **Precast Concrete Detailing**
 - **Primary**
 - Production Planner - Concrete

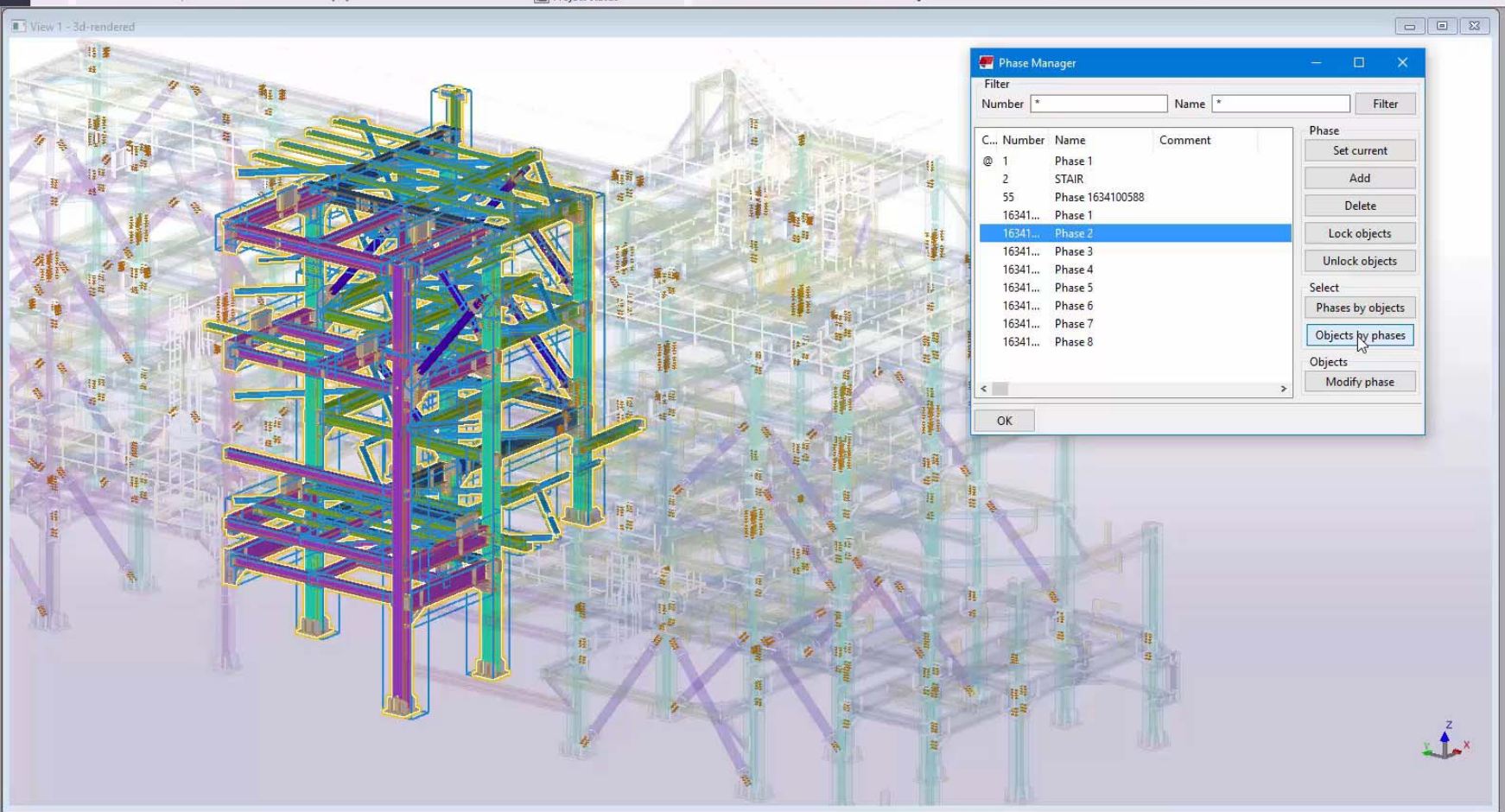
Available in versions:

2018i

2019

2019i





Applications & components

Show related

stacker

Search results for 'stacker' Sort by a-z

Stacker

Show hidden items

Steel assembly (140 selected)

General

Assembly num: *Varies* 1

Name: *Varies*

Erection workflow

Status: *Varies*

Planned start: 23

Planned end: 23

Actual start: 23

Actual end: 23

More (Last selected object)

Modify

LOCALIZATION



2019i Localization Improvements

- New Property Pane UDAs now included out of the box

Localized UDAs will be visible by default to improve efficiency with these UDAs are commonly used.

Expand all
Collapse all
Show properties that have a value
 Show properties based on visibility settings
 Set default values automatically

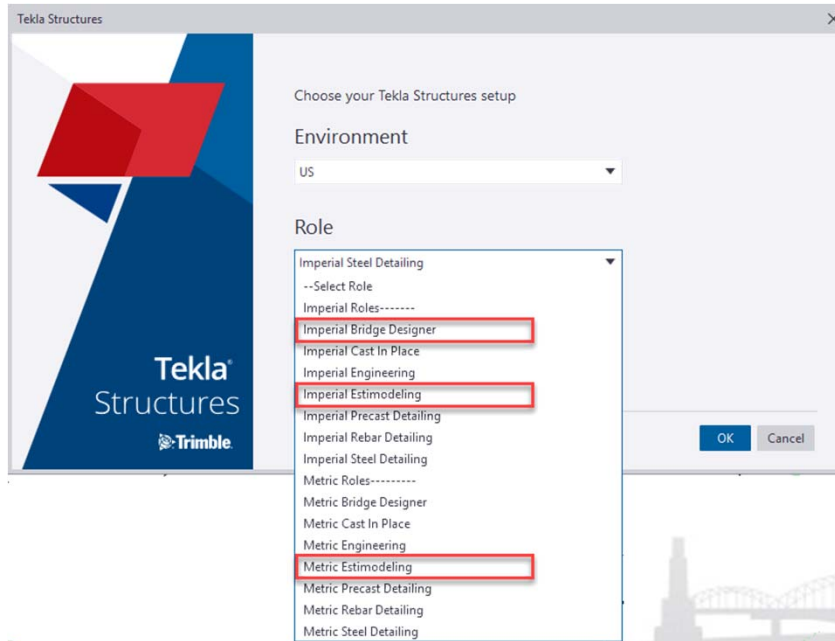
- General
- Numbering series
- Position
- End offset
- Deforming
- Curved beam
- Localized UDAs**
- Parameters
- End conditions
- Modeling Workflow
- Field Studs
- Shop/Site Status
- Clash Management
- Design/Detailing Status
- Material Status
- Assembly Status
- User Defined Attributes

Customize...

Other UDAs can be found via the options button. These are UDAs from the typical out of the box dialog and now can be easily accessed in the property pane. These are hidden by default but visible when you click the “eye”.

2019i Localization Improvements

- Esti-modeling Role and Bridge Designer Role for Imperial now included in 2019i!



Overview of Tekla Structures 2019i

Model productivity and usability

- Updates to property pane
- Snapping improvements
- Search within model
- View Improvements
- Lofted Plate

Increase your offering capabilities

Model productivity and usability

- Stacker Tool for Steel

Collaboration

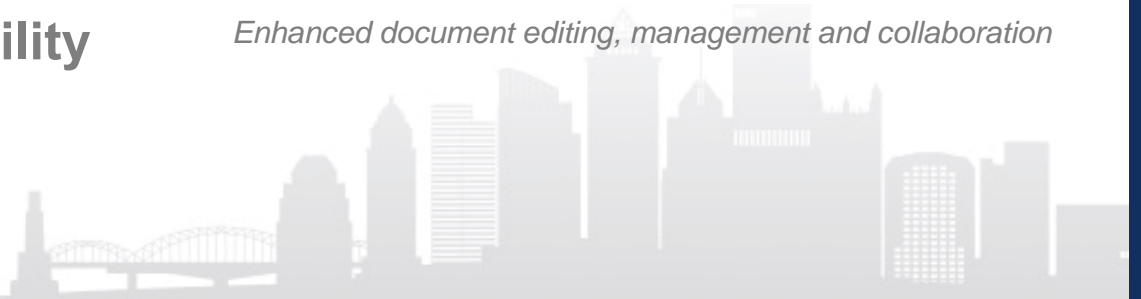
- New visualizer
- New DWG and DGN export options
- IFC conversion

Improved ways of working with other project members

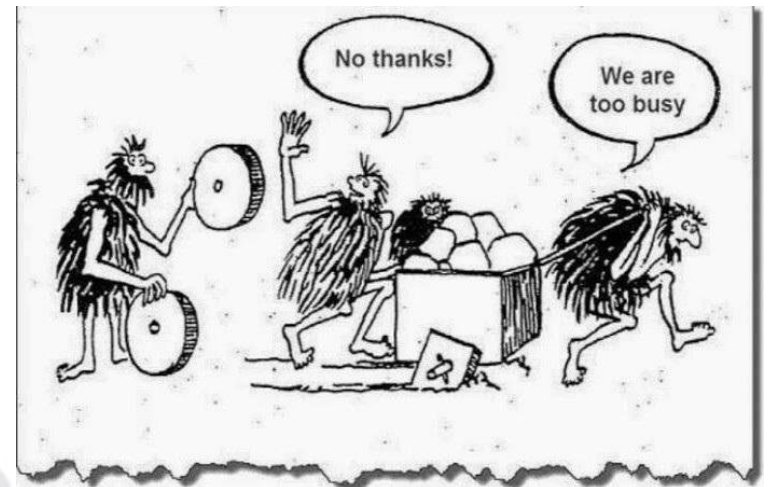
Documentation workflow

- Drawing view frame hidden

Enhanced document editing, management and collaboration



HOW TO STAY UP TO DATE



Release Notes

2019

Trimble Tekla Online Lee Snyder

start your search here...

Browse in English for software version

HOME PRODUCT GUIDES SUPPORT ARTICLES TUTORIALS EXTENSION HELPS

2019 TABLE OF CONTENTS

Upgrade to this version > Tekla Structures 2019 release no. > Changes in Tekla Str

View Revisions

Last updated June 19, 2019 by Tekla User Assistance | Software version: 2019

Tekla Structures 2019 release notes

Welcome to Tekla Structures 2019!

Check the links below for information on the many new features and improvements in this version:

- Changes in Tekla Structures installation
- Licensing updates
- Updates to start screen, side pane, Quick Launch, and project properties
- New way to part labels, clip planes, and window options
- New way to find and select objects in model and drawings: Select by identifier
- Radial grids and grid properties in the property pane
- New plate type for bent plates: stand-alone bent plate
- New curved construction objects and other improvements
- Modeling and detailing improvements
- Rounding, step tapering, cranking, and other rebar set improvements
- Clone selected in drawings
- Improvements in Drawing content manager, marks and notes

Trimble Tekla Online Lee Snyder

start your search here...

Browse in English for software version 2019

HOME PRODUCT GUIDES SUPPORT ARTICLES TUTORIALS EXTENSION HELPS CONTACT US

Release Notes - Tekla Structures 2019

Filters

Development area

Steel components

Defect number	Development area	Description
TTSD-13621	Steel components	When using Excel design with connections, if the .xls file is not found, the error message appears behind other windows on the screen.
TSAC-2587	Steel components	In Bolted moment connection (134) , Column with stiffeners W (182) and doubler plate cut for avoiding a clash with the main part is now created correctly.
TSAC-2563	Steel components	In Brace corner tubes & PI (44) , parts no longer get new a ID when modified.
TSAC-2522	Steel components	In Cage ladder (560) , the parts welded to the ladder no longer lose welds.
TSAC-2456	Steel components	In Haunch (40) , an unwanted chamfer was previously created on the part.
TSAC-2452	Steel components	In Rebar hole , when Rounding type on the Parameters tab is set to Round and the Advanced tab is set to Part cut or Bolt hole + part cut , if the maximum rebar diameter defined in the rebar properties, Tekla Structures creates a rebar diameter smaller than the rebar diameter from model.
TSAC-2445	Steel components	In H&V Sloped Shear PI (29) , H&V Shallow Shear PI (30) , Bent Shear Plate (31) , the Notch radius now define the top and bottom notch radiuses.
TSAC-2444	Steel components	In Measurement element (25) , the Notch radius for the additional hole is now defined correctly.

Trimble Tekla Online Lee Snyder

start your search here...

Browse in English for software version 2019 Match by All words

HOME PRODUCT GUIDES SUPPORT ARTICLES TUTORIALS EXTENSION HELPS CONTACT US

View Revisions

Last updated March 13, 2019 by Tekla Support US | Software version: 2019 | Environment: United States (Imperial) United States (Metric)

Tekla Structures 2019 US environments Release Notes

Table of Contents

1. Folder Structure Reorganization
2. Common to all US Roles
3. Steel Detailing Role
4. Partner Developer Notes
5. Administrator Release Notes

1. Folder Structure Reorganization

1.1 Environment folders

We have modified the environment to now contain both US Imperial and US Metric within one environment. See image below for reference, the environments have now been combined into one environment called USA.

Within the USA environment, we have 3 main folders, one which contains shared files between both US Imperial and US Metric called "Common" and then specific folders for settings that are different between US Imperial and US Metric. These folders are called Imperial and Metric.

Folder Name	Last Modified
common	3/11/2019 8:13 AM
Imperial	3/11/2019 8:14 AM
Metric	3/11/2019 8:15 AM
env_USImperial	3/11/2019 8:14 AM

What's New Webinars – tekla.com/about/webinars

- **Tekla software 2019i - Latest development for working with steel**
 - September 4th
- **Tekla software 2019i - Latest development for working with concrete**
 - September 5th



Monday Minutes - Recent Steel Developments

RECENT TEKLA STEEL DEVELOPMENTS
This Stream includes all Videos from our Monday Minutes - Recent Tekla Steel Developments Youtube playlist

- 13:23 Straight Staircase in Tekla Structures
- 9:04 Curved Construction Objects and Radial Grids in Tekla Structures 2019
- 5:19 Clone Selected in Tekla Structures 2019
- 8:23 Stand Alone Bent Plate in Tekla Structures
- 5:11 Improvements In Bolt Holes in Tekla Structures 2019

Monday Minutes - Recent Tekla Steel Developments
73 videos • 29,281 views • Last updated on Mar 27, 2019

- 13:23 Straight Staircase in Tekla Structures
- 9:04 Curved Construction Objects and Radial Grids in Tekla Structures 2019
- 5:19 Clone Selected in Tekla Structures 2019
- 8:23 Stand Alone Bent Plate in Tekla Structures
- 5:11 Improvements In Bolt Holes in Tekla Structures 2019
- 3:14 Overlay 2D Annotations on a 3D Model
- 4:13 Linking Documents To Trimble Connect
- 2:30 User Interface Improvements in Tekla Structures 2018!
- Weld Improvements in Tekla Structures

US Steel Tips and Tricks

The image displays a browser window showing the Tekla website and a YouTube video player. The website header includes the Trimble logo and the Tekla logo, with navigation links for SOLUTIONS, PRODUCTS, RESOURCES, SERVICES, ABOUT, and CONTACT. Below the header, there are links for Blog, I am a..., I work with..., and Resources. The main content area is titled "US STEEL TIPS & TRICKS" and features a grid of video thumbnails. The largest video thumbnail is titled "Custom Components - Getting Started with Formulas in Tekla Structures" and has a duration of 17:28. Other thumbnails include "Custom Components - Adding Bindings in Tekla Structures" (12:22), "Custom Components in Tekla Structures" (12:56), "Types of Reports in Tekla Structures" (16:04), and "Introduction to the Template Editor in Tekla Structures" (14:35). The YouTube player shows the video "Custom Components - Getting Started with Formulas in Tekla Structures" with 1,576 views and 44 likes. The video description mentions that the content discusses ways to make custom components more intelligent by using formulas and variables.

TEKLA
BASECAMP

Tekla Structures User Feedback Program

Tekla Structures User Feedback Program



Tekla
User Feedback
Program

Would you like to be the first to try our latest developments in Tekla Structures?



- Do you have great ideas on how Structural BIM software could change the industry?
- Do you want to test-drive software functionality and solutions inspired by industry leading customer needs, and offer your view on how this may also work within your business?

Shortly about User Feedback Program (UFP)

- UFP is a program during which the latest implementations and features in the software are presented to testers who have signed up and agreed to the terms and conditions of the Non-Disclosure Agreement (NDA).
- Testing is done using Tekla Structures Test Packages and Test Cases.
- This is a chance to be among the first ones who can test and provide early feedback on our latest developments in the software.

Tekla Structures User Feedback Program

Shortly about User Feedback Program (UFP):

- UFP is a program during which the latest implementations and features in the software are presented to testers who have signed up and agreed to the terms and conditions of the Non-Disclosure Agreement (NDA).
- Testing is done using Tekla Structures Test Packages and Test Cases.
- This is a chance to be among the first ones who can test and provide early feedback on our latest developments in the software.

Learn more: <https://teklastructures.support.tekla.com/user-feedback-program>

Please submit your contact information so that we can get in touch with you during the recruitment period for the next UFP.

* Required

Email address to contact you *

Your answer

First and last name *

Your answer

Name of your company *

Your answer

Country *

Choose

How did you find out about Tekla Structures User Feedback Program? *

Found the UFP page on Tekla User Assistance

Through a pop-up message in Tekla Structures

Received information directly from Trimble

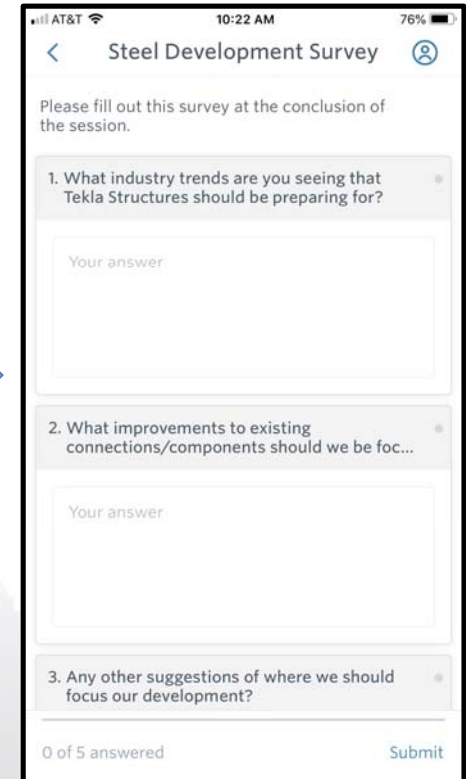
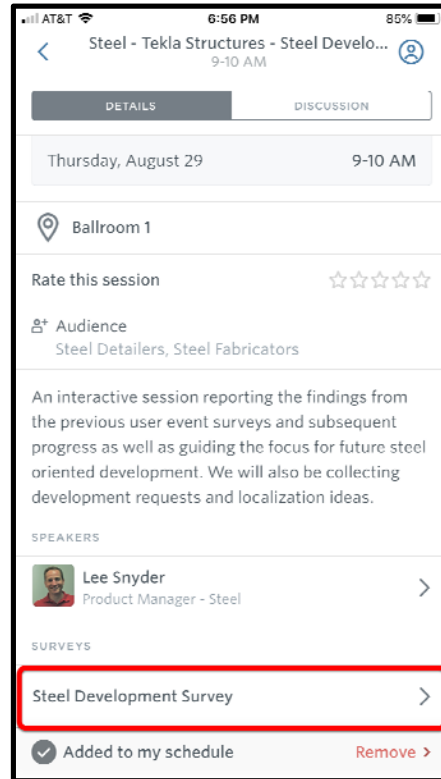
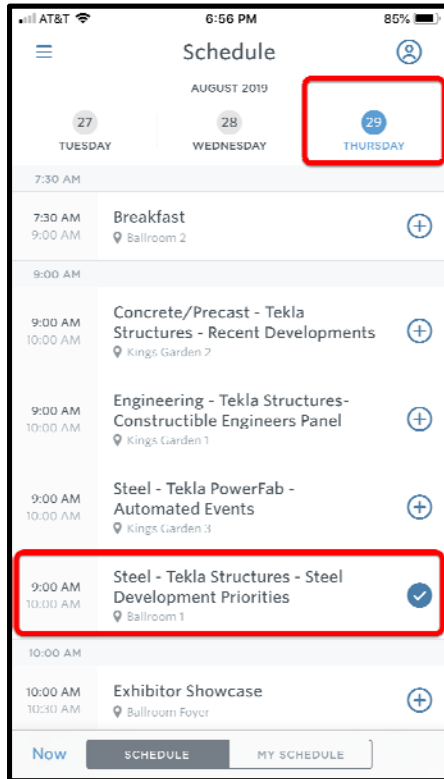
Someone sent me a link to this sign-up form

Other:

Never submit passwords through Google Forms.

TEKLA
BASECAMP

Please Fill Out The Survey



Thank you!

QUESTIONS?

