



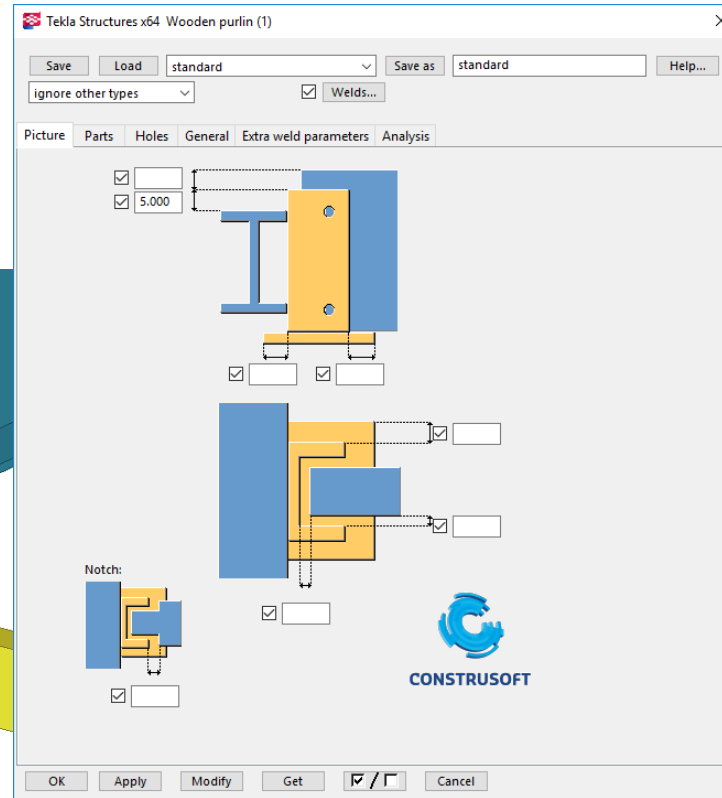
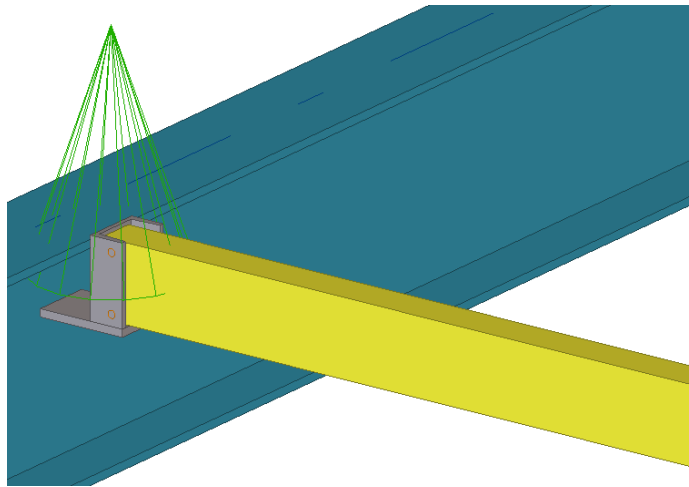
CONSTRUSOFT

Construsoft Library Tools 2020

Steel

Wooden Purlin (1)

- > Creates a connection between een steel and wooden beam.



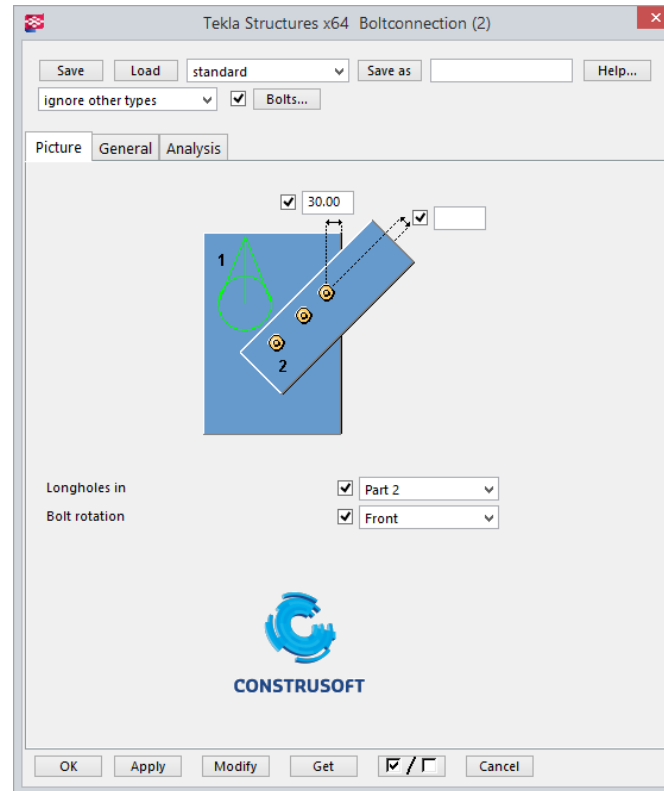
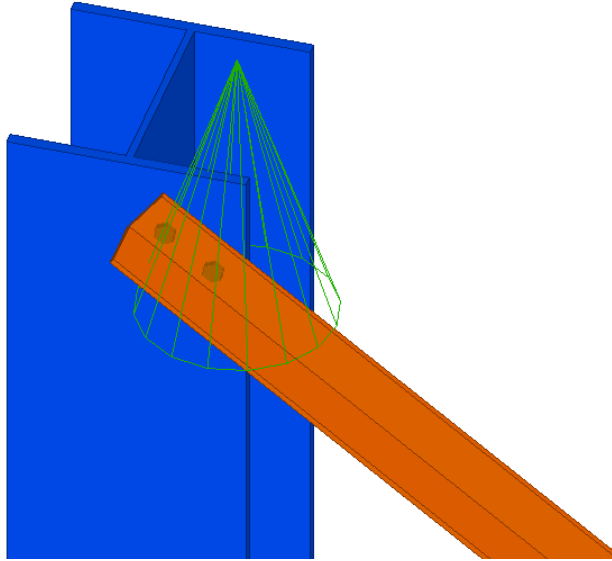
CONSTRUSOFT





Bolt connection (2)

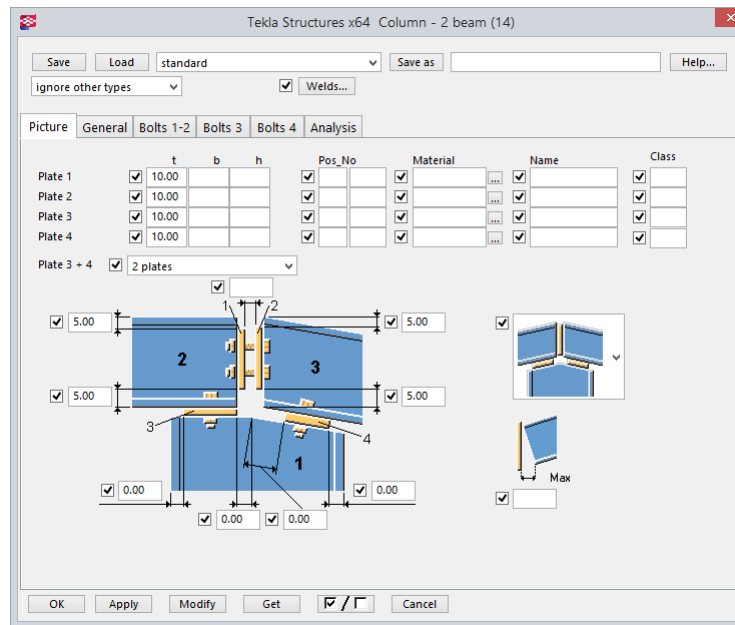
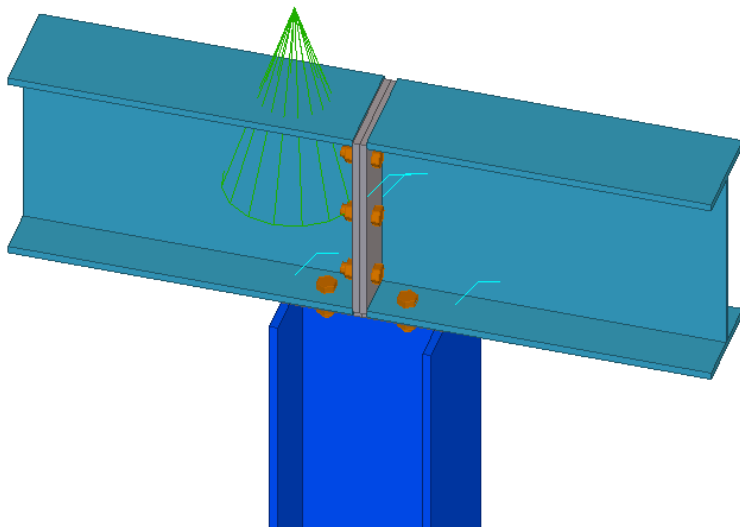
- Creates a bolt connection between 2 crossing profiles.





Column – 2 beams (3)

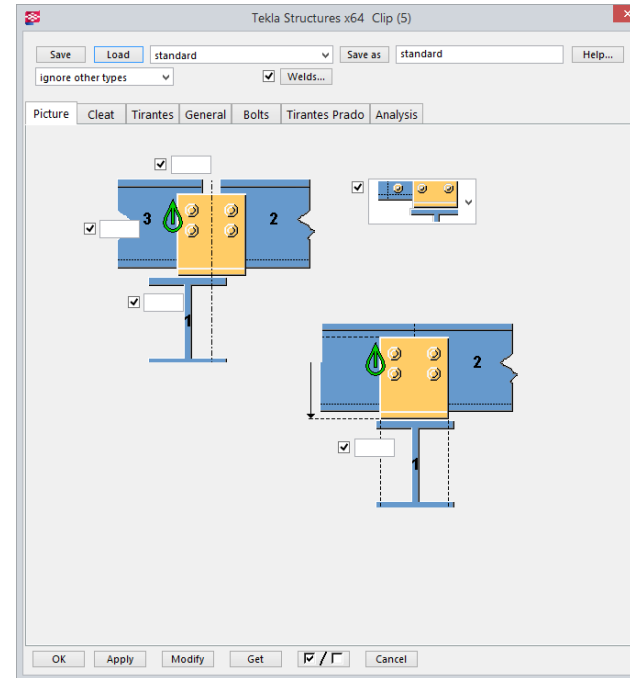
- Creates a connection between a column and two beams, the end of the beams lay on the column. The beams could lie horizontally, but a angle is possible.





Clip (5)

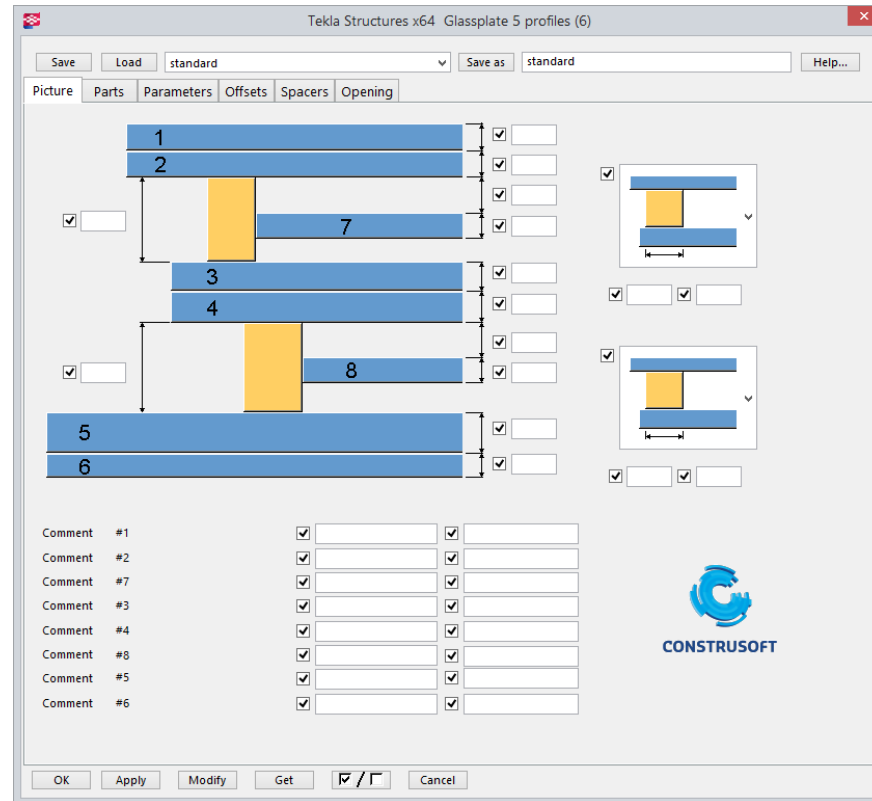
- Creates a connection between a beam and two beams on top of it.





Glassplate 5 profiles (6)

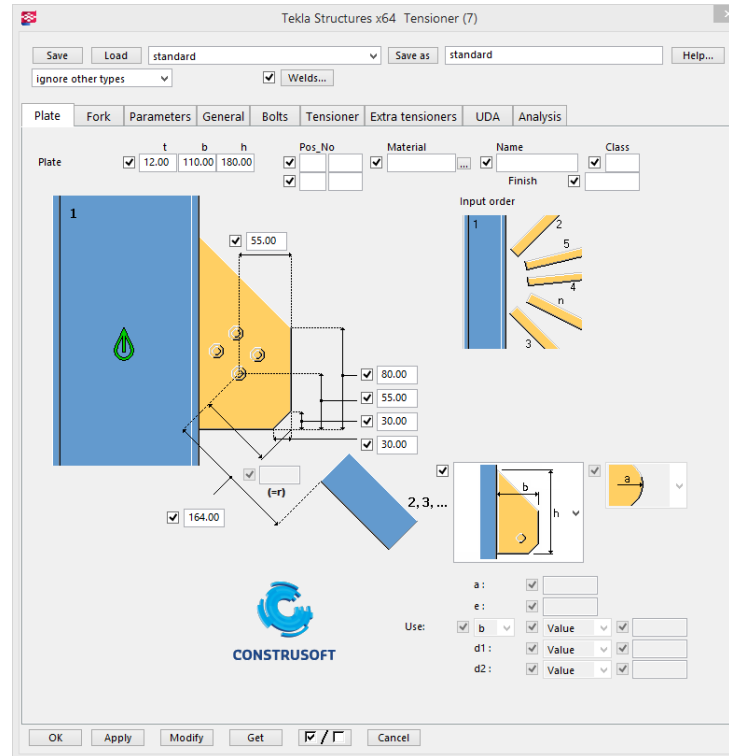
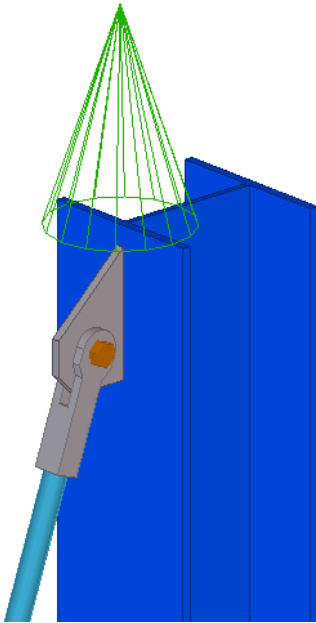
- Creates glassplates inside a window.





Tensioner (7)

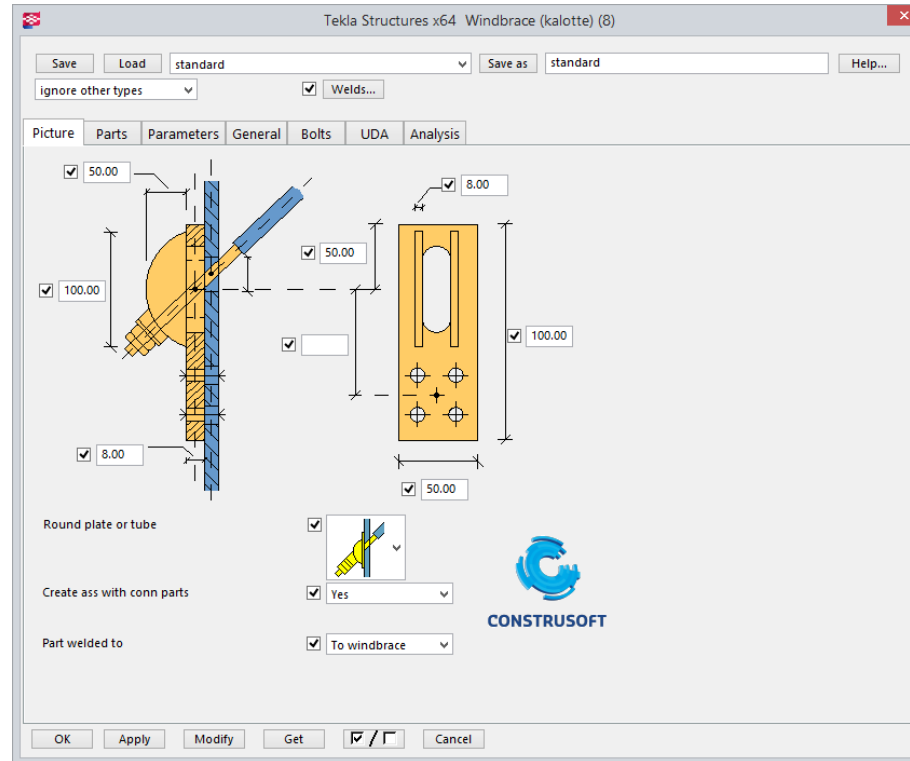
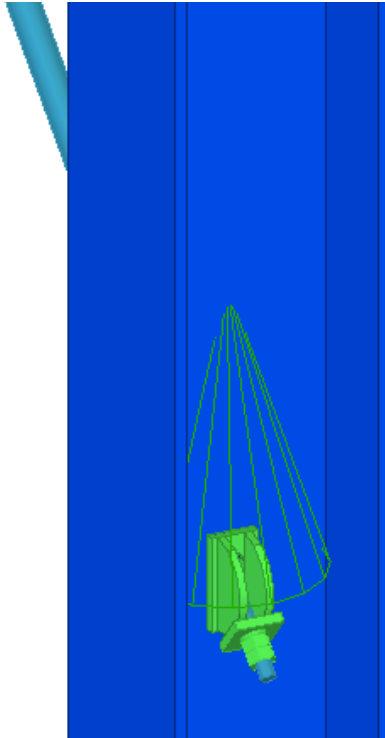
- Creates a connection between a column or a beam with a windbrace. The connection is made with a fork or a plate.





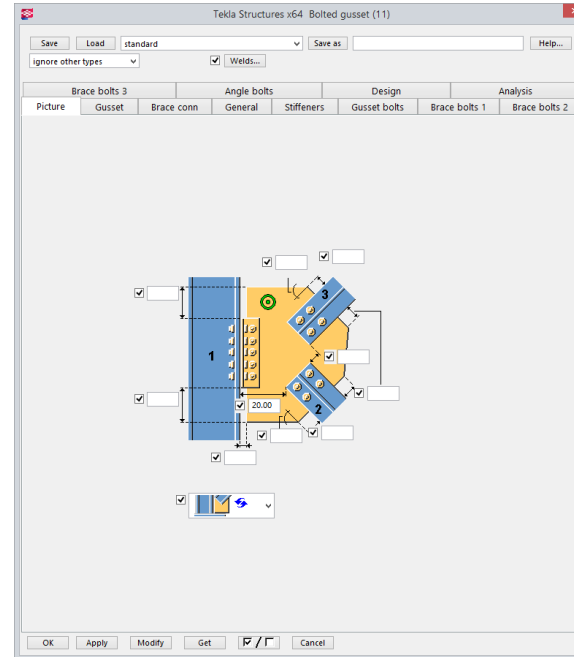
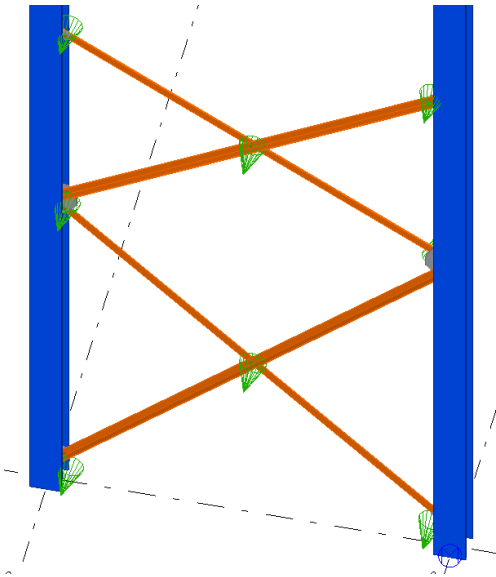
Windbrace (kalotte) (8)

- Creates a connection between a column or a beam with a windbrace bar.



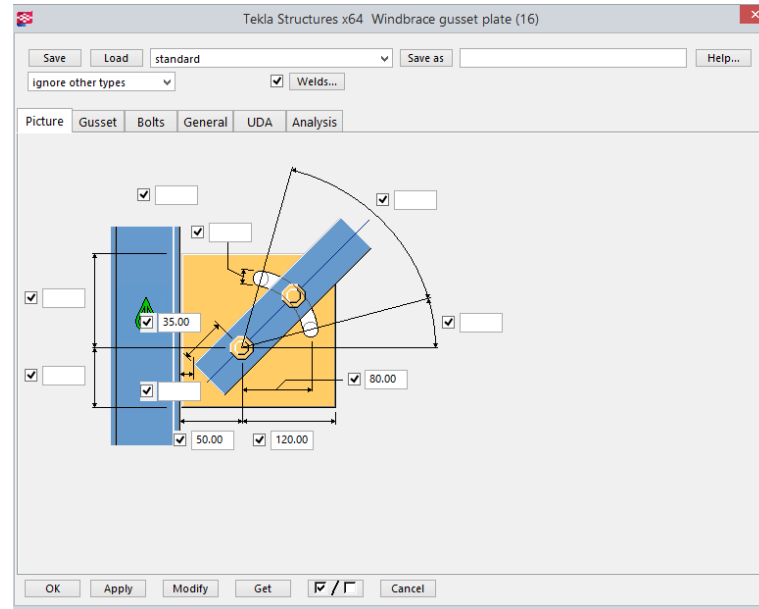
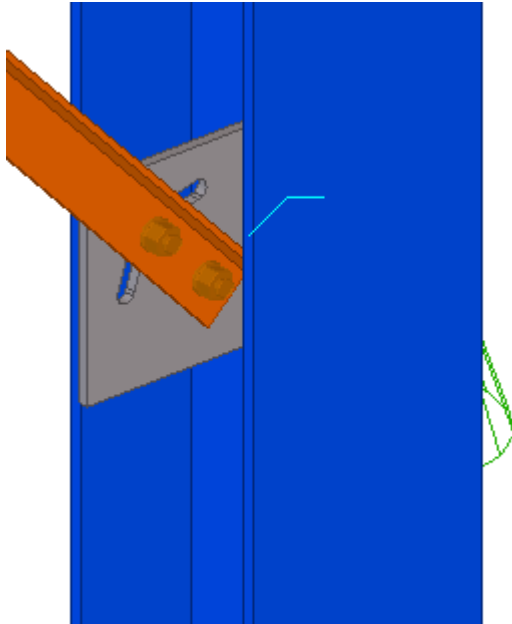
Tensioner brace (13)

- The component tensioner brace (13) can be used for modeling of one or two wind crosses connection between two profiles. In addition to the wind bracing profiles can also be generated directly to the terminals.



Windbrace gusset plate (16)

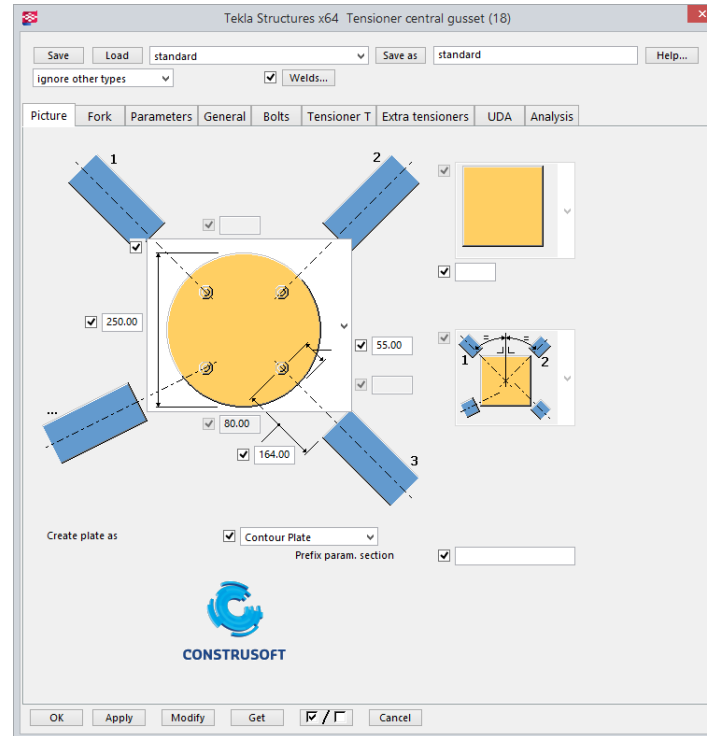
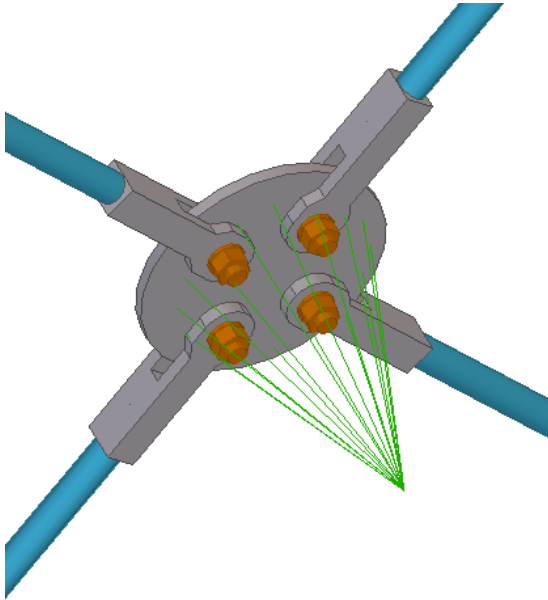
- Creates a connection between a Gusset plate and a plate- or L-profiel. These gusset plate has one round hole and one curved slot. The curved hole makes is possible to link the brace's with different angles.





Tensioner central gusset (18)

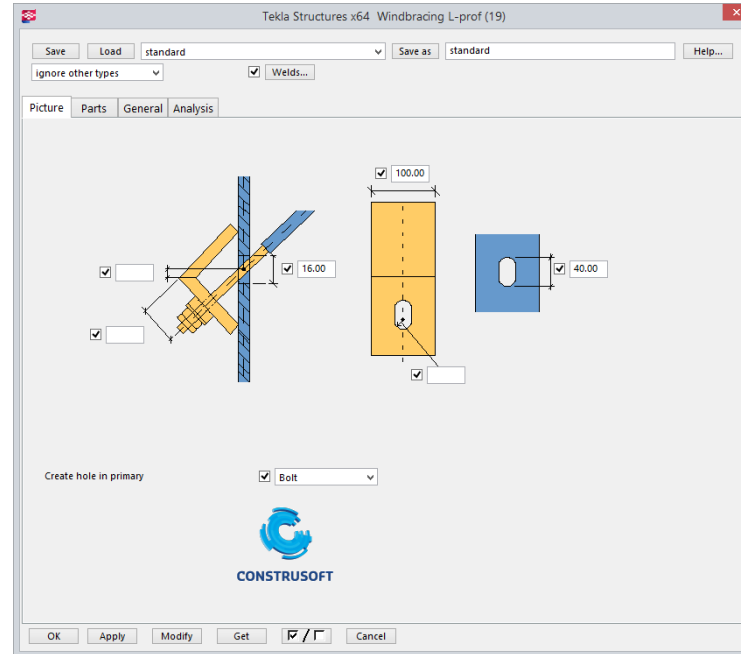
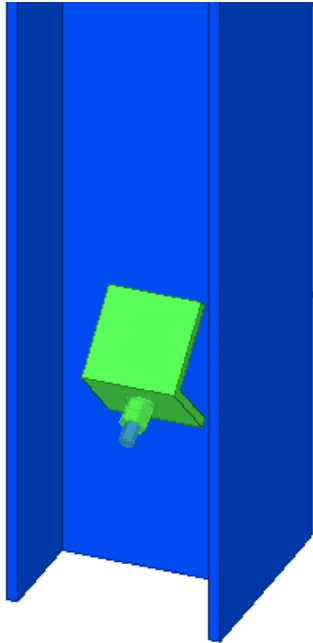
- Creates a connection between four bracing rods. The component can be used in combination with the specifications of Willems Anker.





Windbracing L-profile (19)

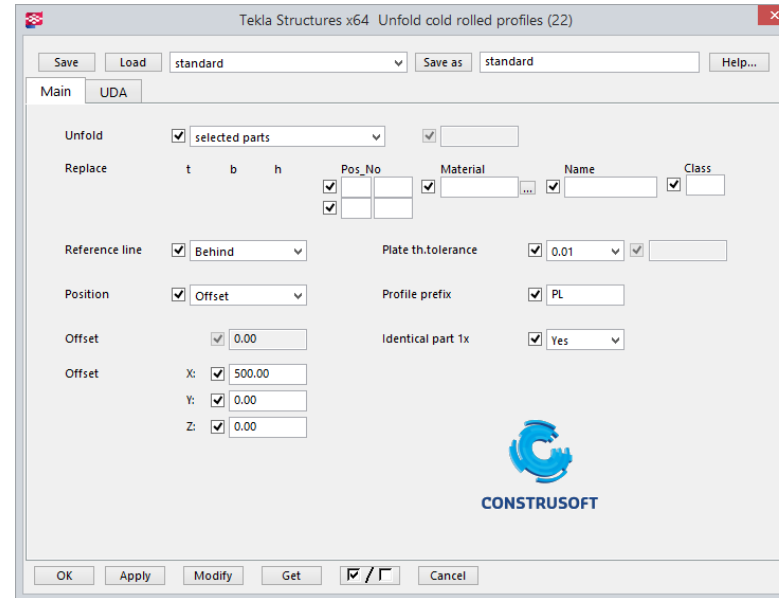
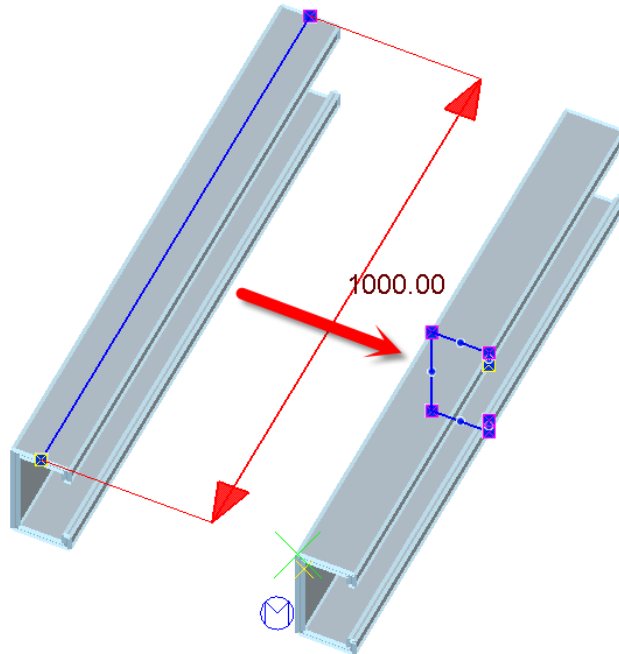
- Creates a connection between a main part and a windbracing rod with the aid of an L - profile so that the wire end protrudes which will be tightened with nuts.





Unfold colled rolled profiles (22)

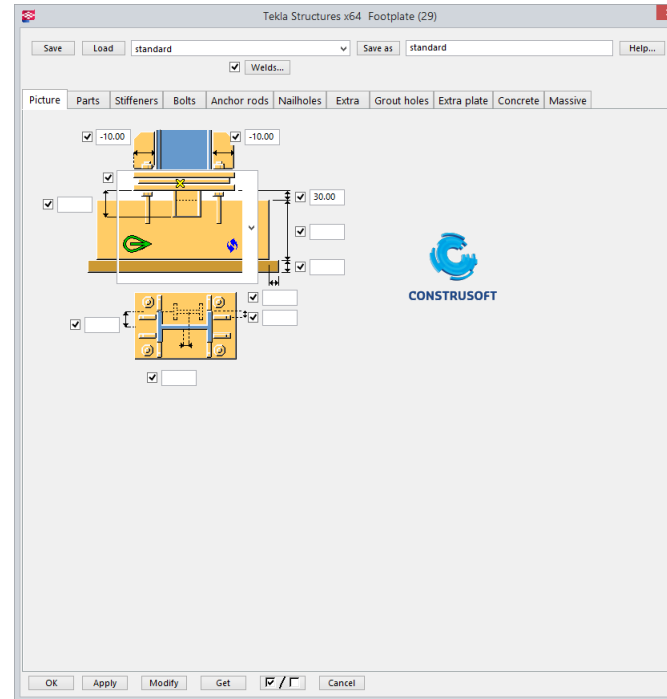
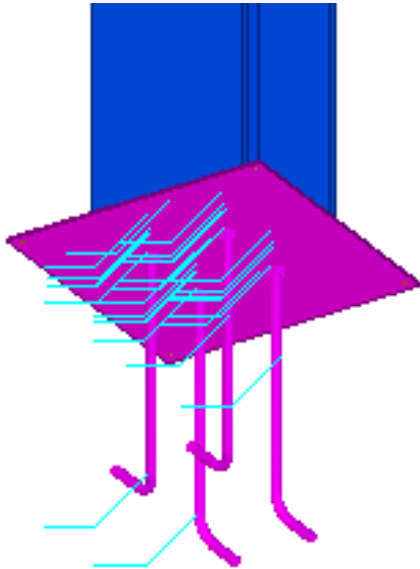
- Creates a Poly-profile from a parametric profiles. The aim is to make a unfold drawing of the profile.





Footplate (29)

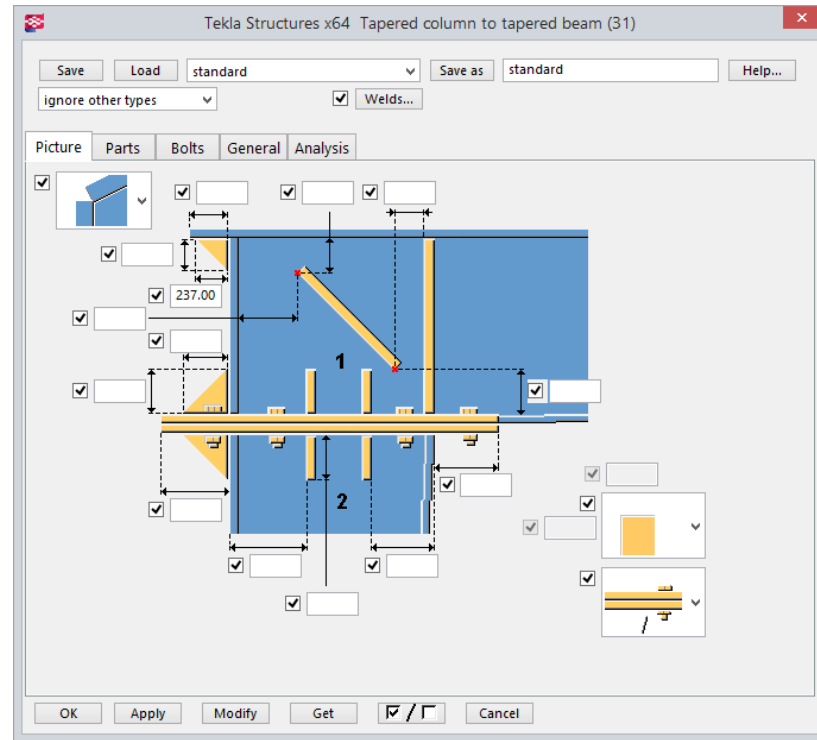
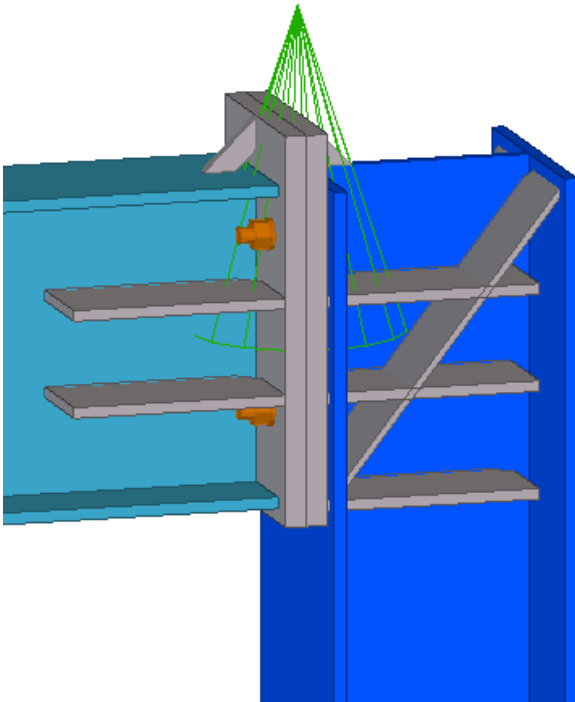
- Creates a footplate at the end of the column.





Tapered column to tapered beam (31)

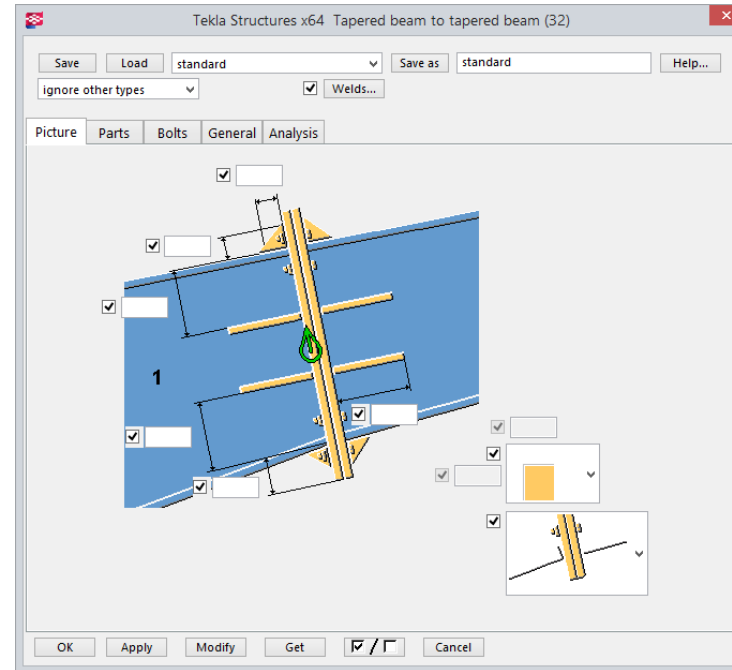
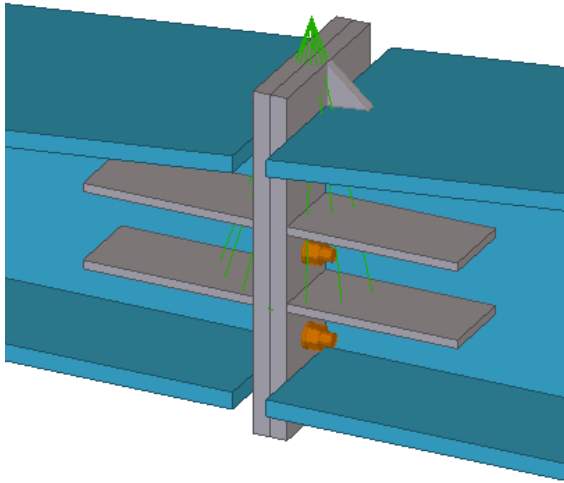
- Creates a connection between a column and a beam.





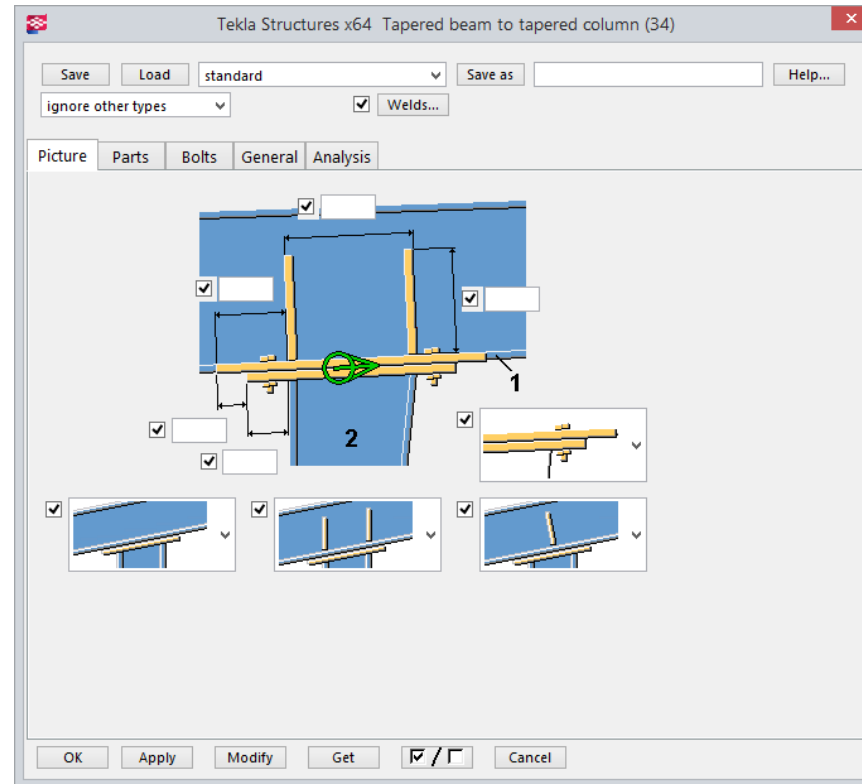
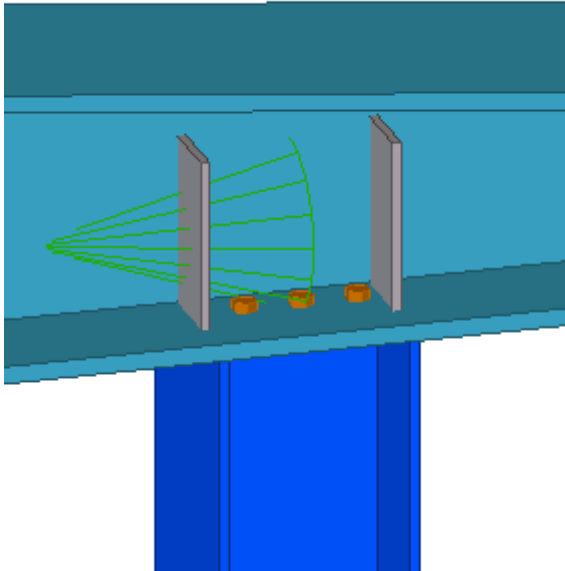
Tapered beam to tapered beam (32)

- Creates a connection between two tapered beams.



Tapered beam to tapered column (34)

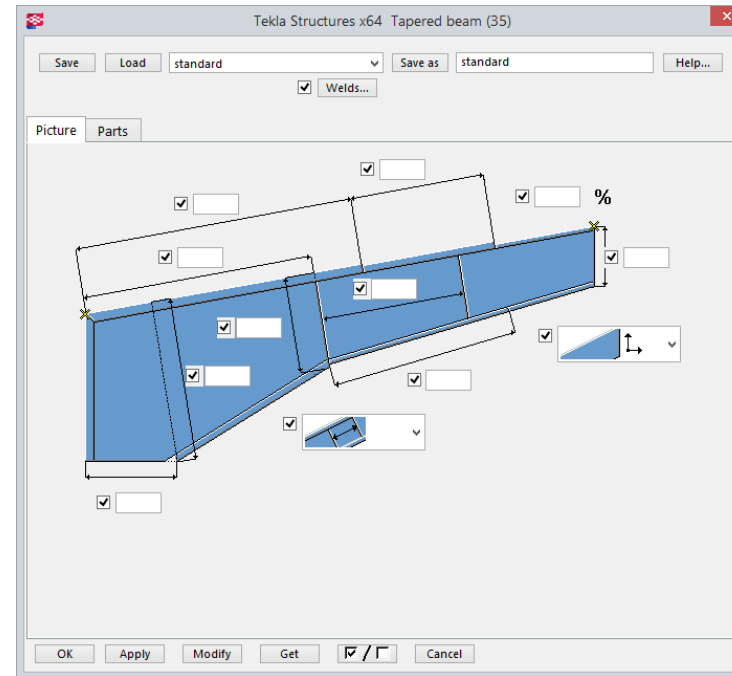
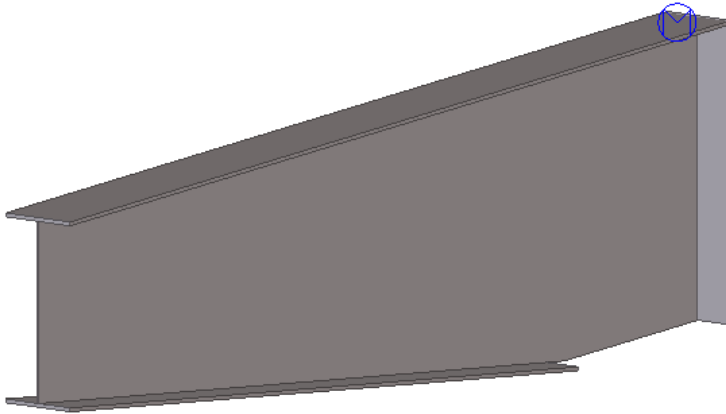
- Creates a connection between a column and a continues tapered beam.





Tapered beam (35)

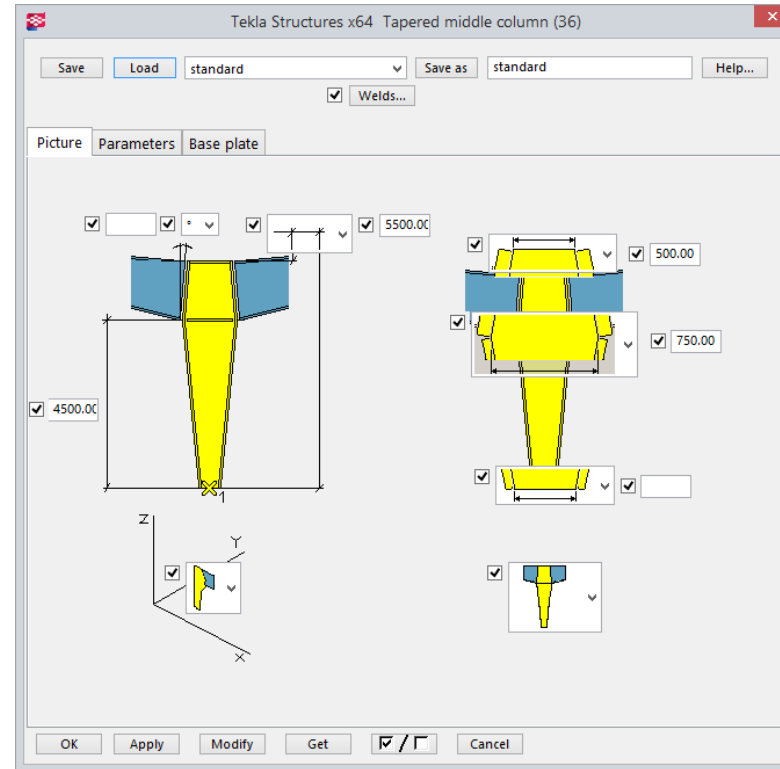
> Creates a tapered beam.





Tapered middle column (36)

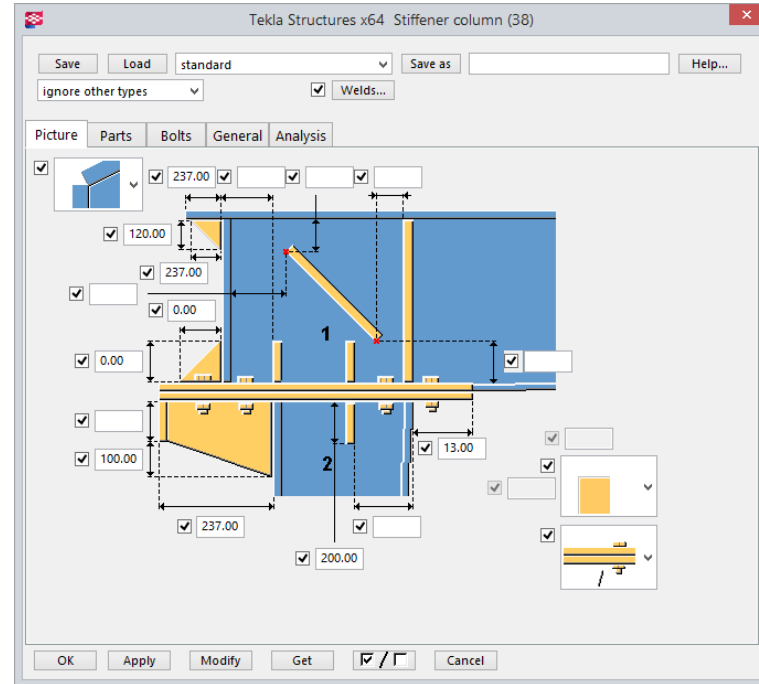
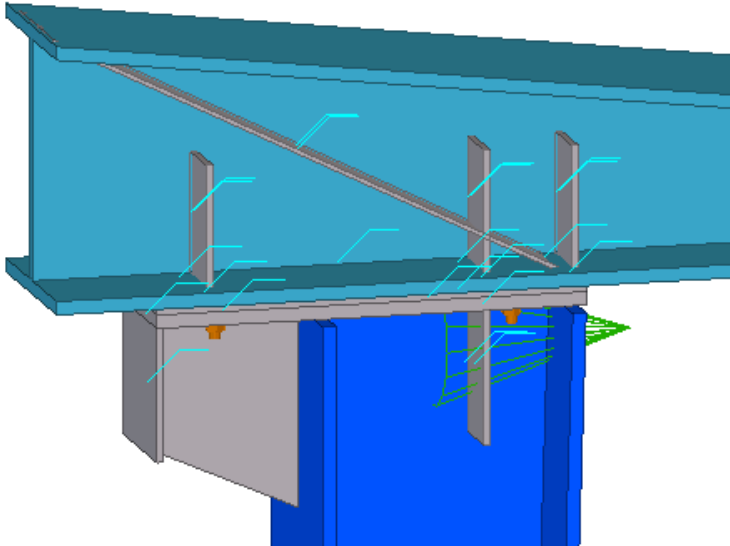
- Creates a tapered column.





Tapered column to tapered beam (38)

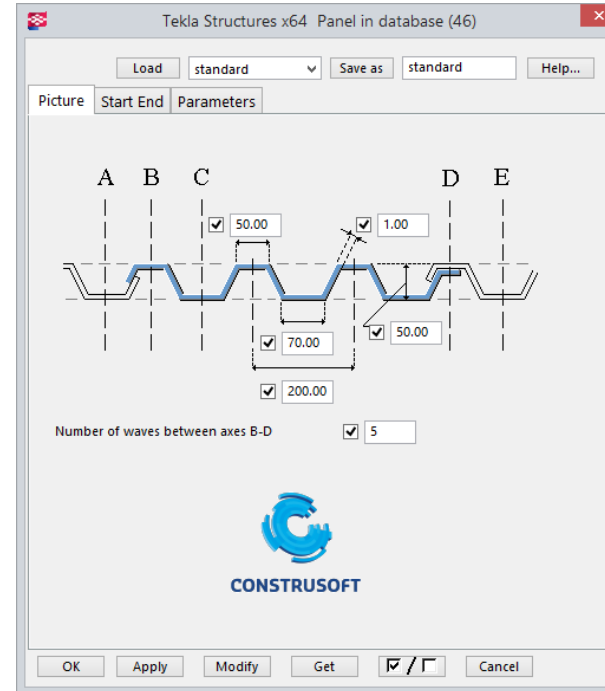
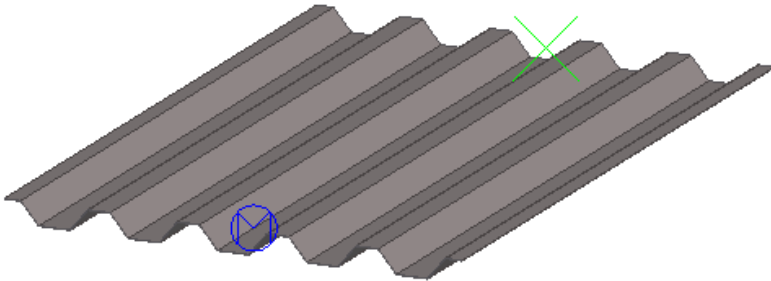
- Creates a connection between a tapered column and a tapered beam with plates.





Panel in database (46)

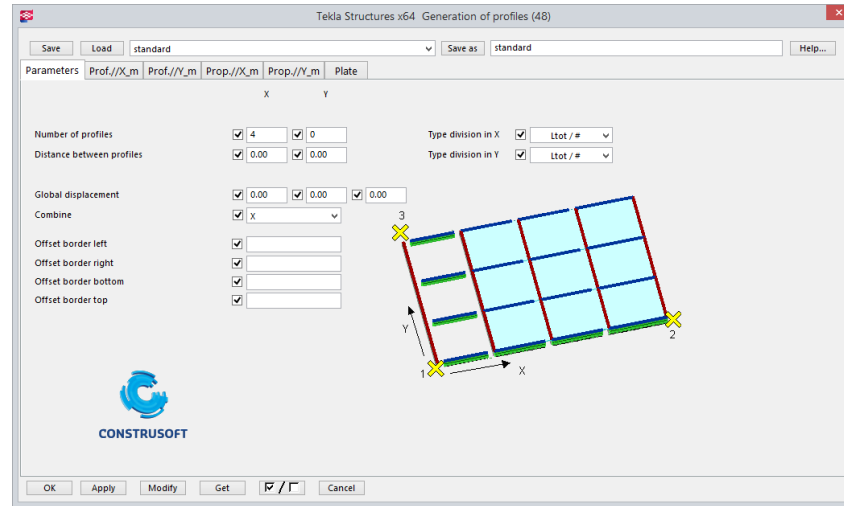
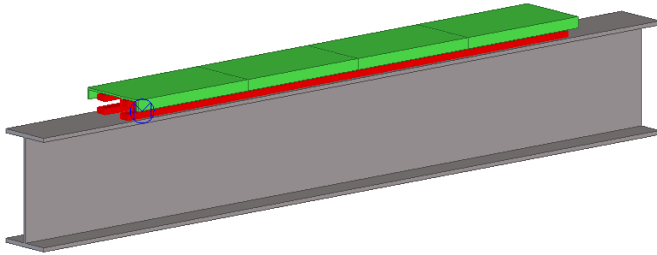
- > Is a used for the addition of a trapezoidal profile on the Structures of Tekla profile database. There is added to both a cross-section as a profile on the database.





Generation of Profiles (48)

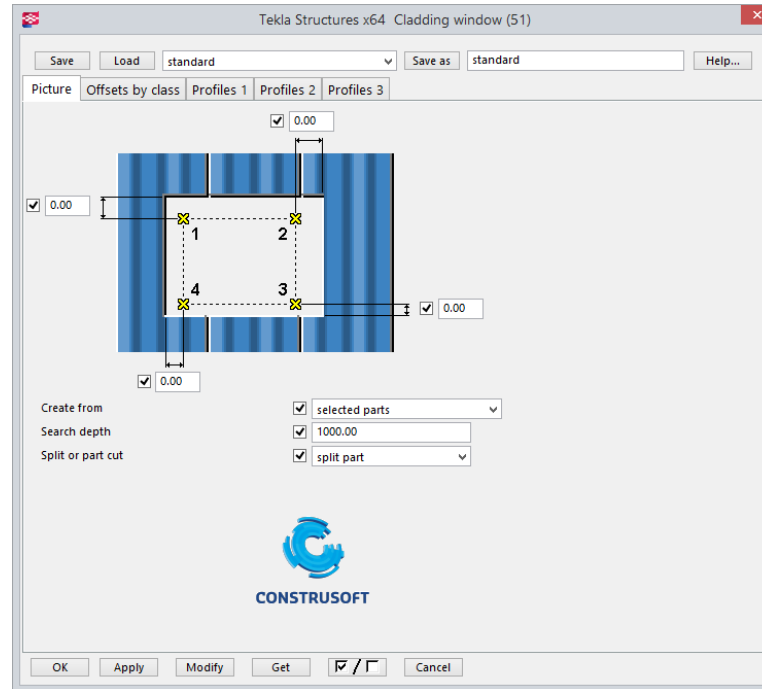
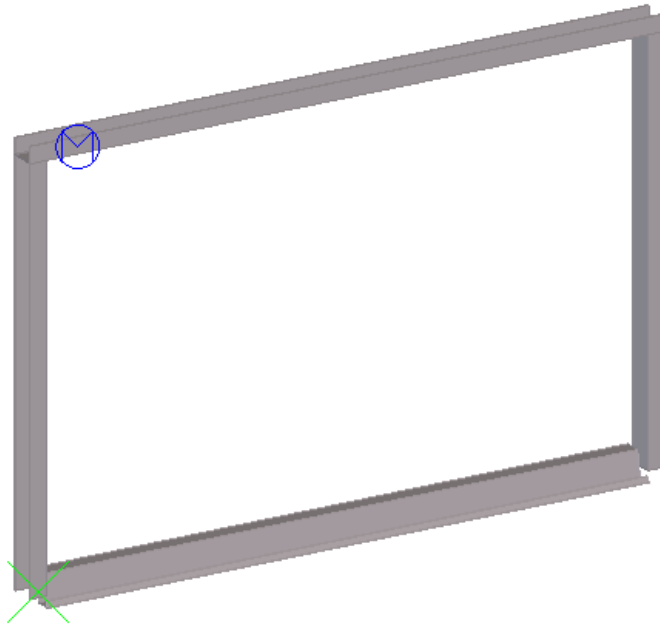
- Creates a filling of a plane with multiple profiles. according to a pattern. In 3 directions (X, Y, Z) a plurality of profiles can be defined, in their own properties, position and rotation.





Cladding window (51)

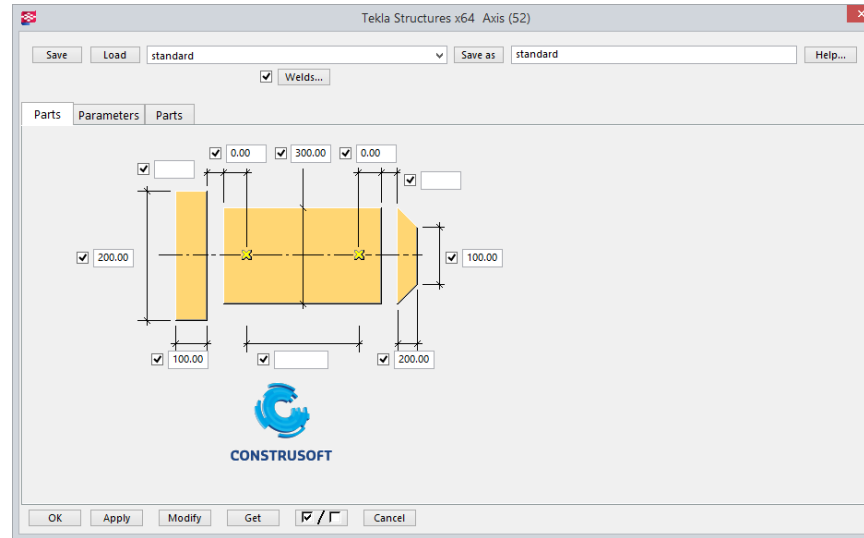
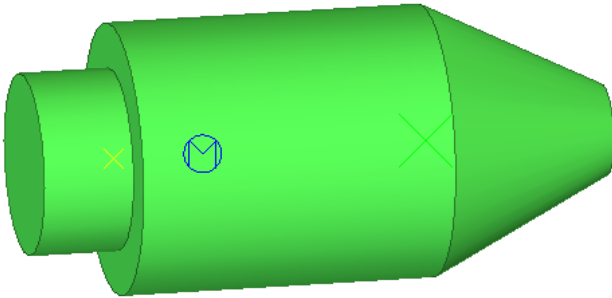
- Creates a recess in a wall of one or more profiles. The component can also generate direct frame profiles.





Axis (52)

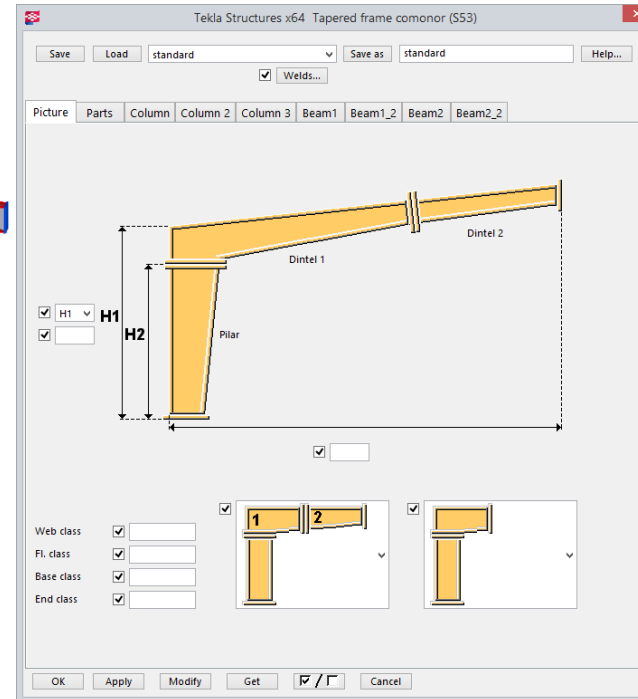
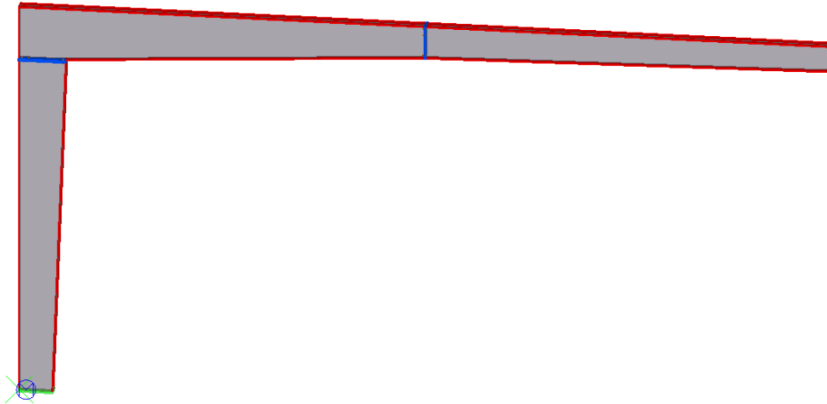
- Can be used for making round sections with different diameters. Up to 3 different diameters can be specified.





Tapered frame (53)

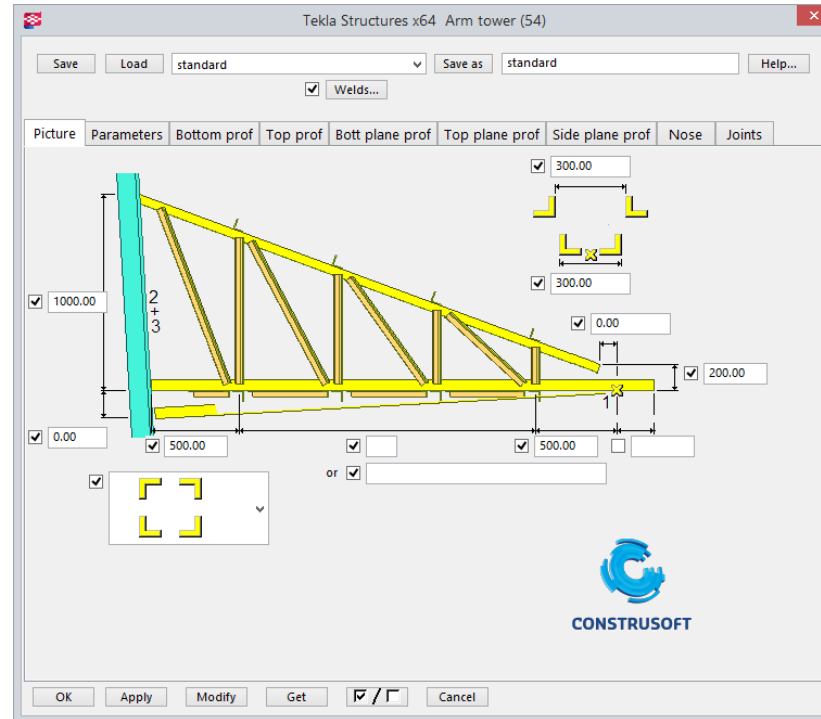
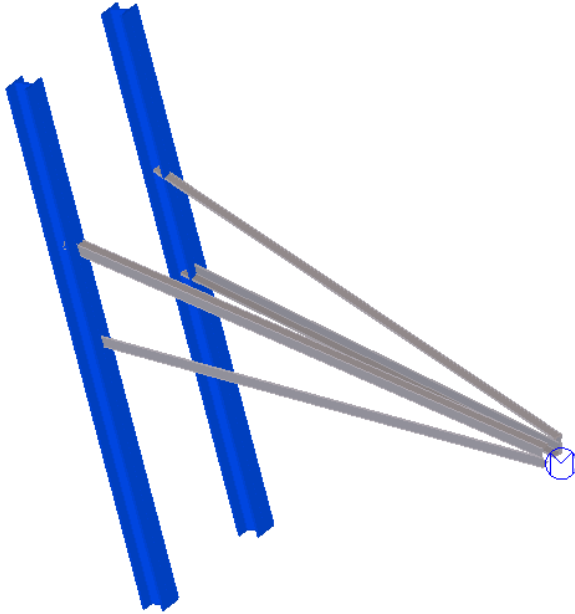
- Creates a frame made up of tapered columns and tapered beams.





Arm Tower (54)

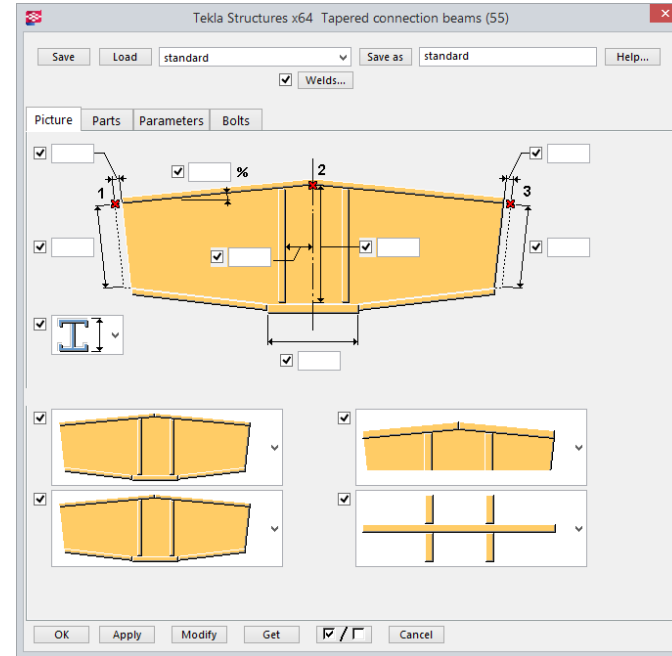
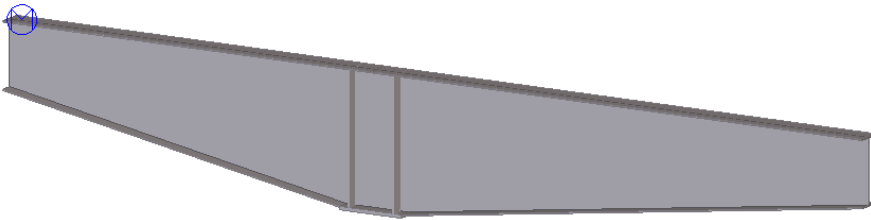
- Creates a arm of a tower. The construction is based on the two columns and the end point.





Tapered connection beams (55)

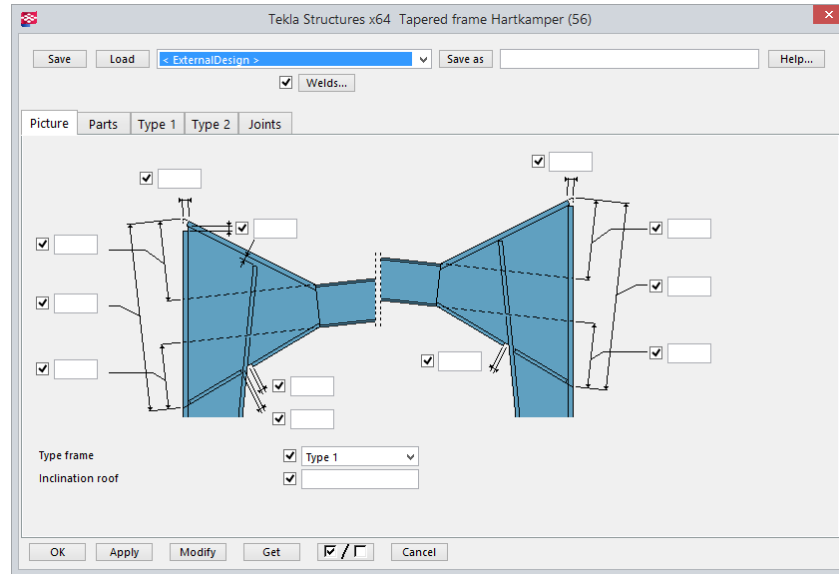
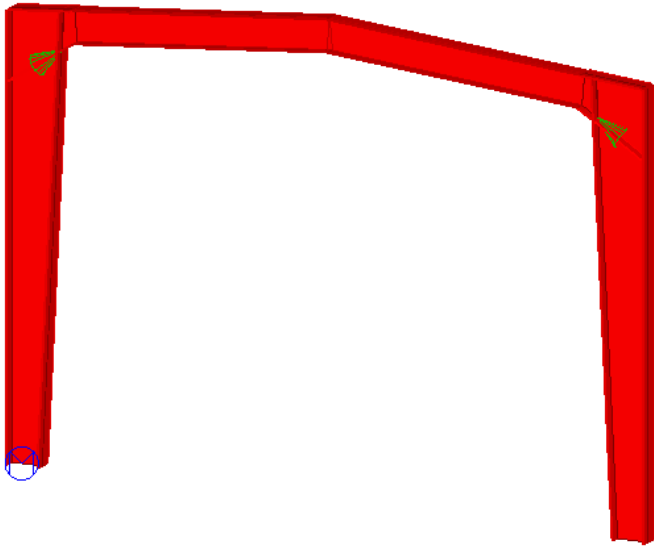
- Creates two tapered beams with a connection between them in the middle.





Tapered frame Hartkamper (56)

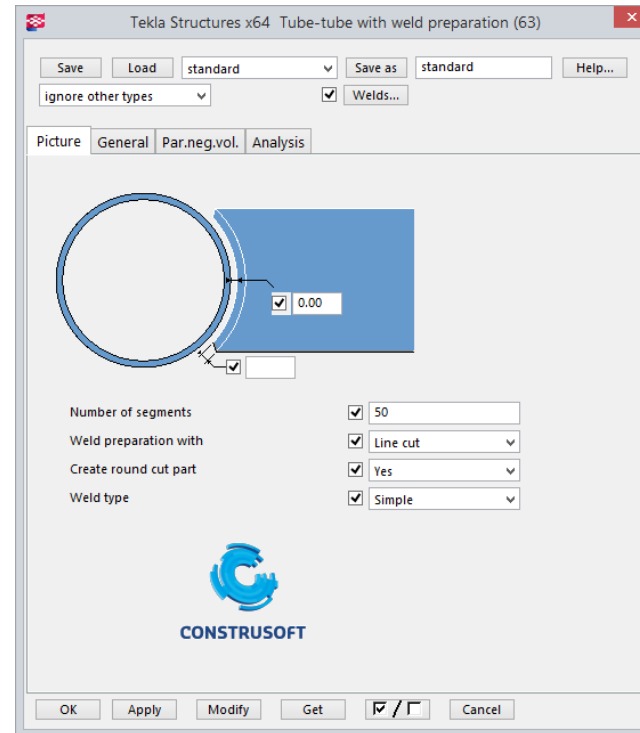
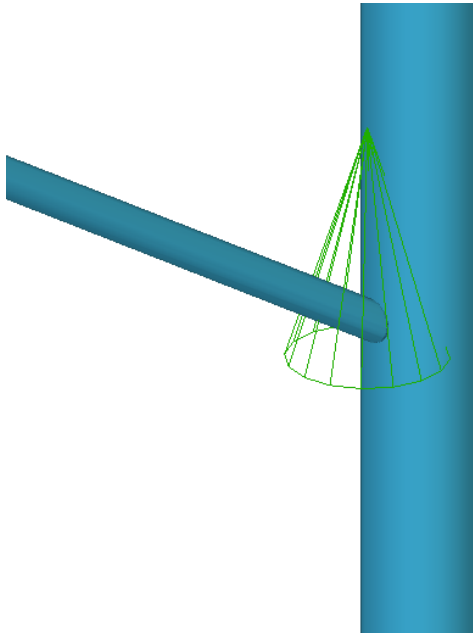
- Creates a frame made up of tapered columns and tapered beams.





Tube-tube with Weld prep (63)

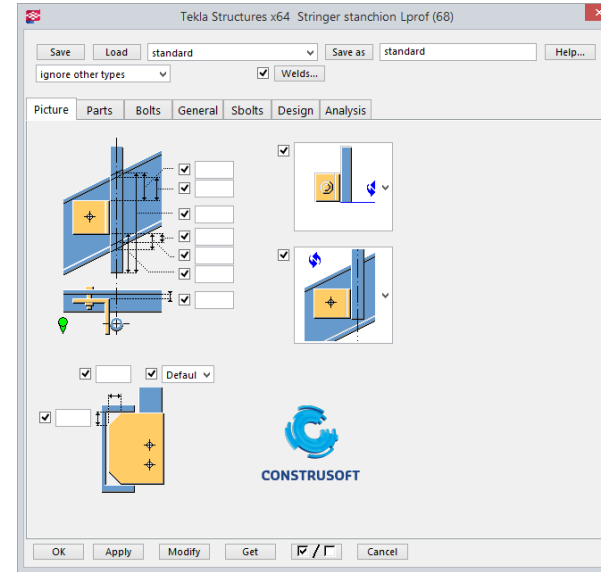
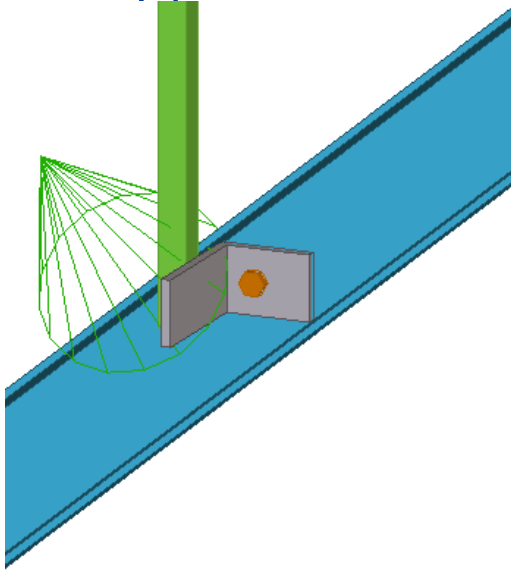
- Creates a connection between two tubes with a weld preparation.





Stringer – stanchion L-prof (68)

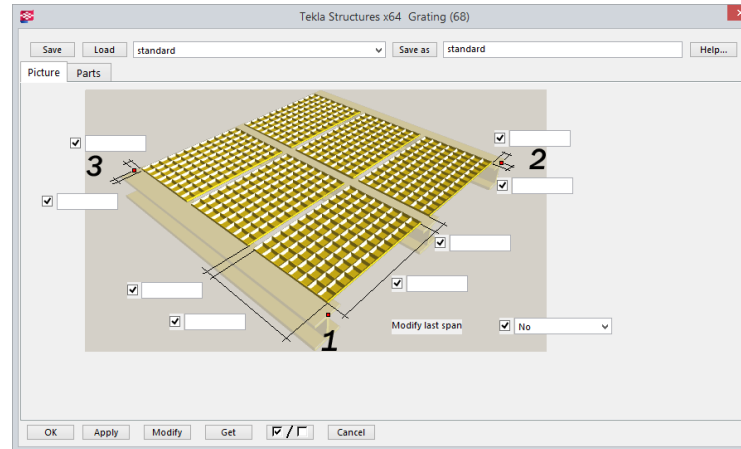
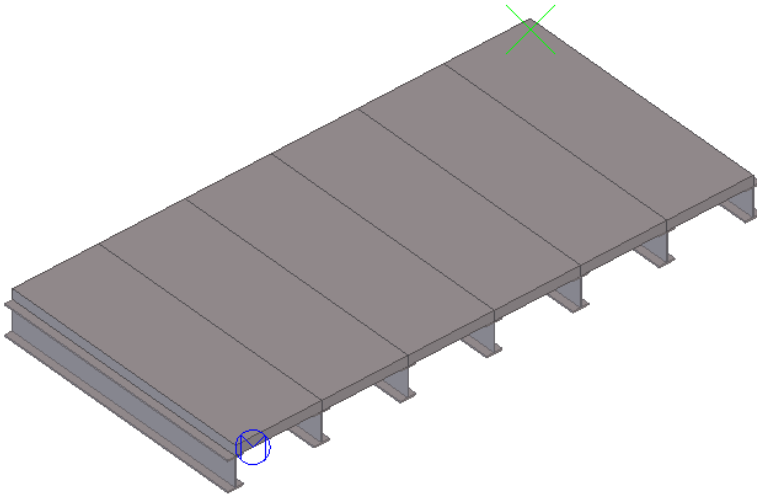
- Creates a connection between an existing stringer and an existing stanchion. The connection contains a plate or L-profile which is welded or bolted to the main and secondary part.





Grating (68)

- Creates a distribution of beams with grating on top.





Bolt-nut-washer report (74)

- Creates a bolt list ,including all the washers and nuts.

lijst_boutgroep.txt - Kladblok

Bestand Bewerken Opmaak Beeld Help

Tekla Structures BNM report
Project number: project nummer
Title: Construsoft bv
Date 25/07/16

BOUT M	Diameter	Site or shop	Standard	Quantity	Grade	Weight
BOUT M 12 X 35	12	Site	4014	2	8.8	0.00
BOUT M 16 X 40	16	Site	4014	19	8.8	0.00
BOUT M 16 X 45	16	Site	4014	12	8.8	0.00
BOUT M 16 X 50	16	Site	931	6	8.8	0.00
BOUT M 20 X 70	20	Site	931	5	8.8	0.00
BOUT M 16 X 70	16	Site	4014	30	8.8	0.00

MOER M	Diameter	Site or shop	Standard	Quantity	Grade	Weight
MOER M 12	12	Site	4032	2	8.8	0.00
MOER M 16	16	Site	934	6	8.8	0.00
MOER M 16	16	Site	4032	61	8.8	0.00
MOER M 20	20	Site	934	5	8.8	0.00

RING M	Diameter	Site or shop	Standard	Quantity	Grade	Weight
RING M 12	12	Site	7089	2	8.8	0.00
RING M 16	16	Site	125A	6	8.8	0.00
RING M 16	16	Site	7089	61	8.8	0.00
RING M 20	20	Site	125A	5	8.8	0.00

0.00

Tekla Structures x64 Bolt-nut-washer report (74)

Save Load standard Save as standard Help...

Parameters Sort Column sort Conversion

Selection ☒ Selected bolts only

File name ☒ lijst_boutgroep.txt

Export grade: ☒ Yes

Export weight: ☒ Yes

Export site ☒ Yes

Bolt translation: ☒ BOUT M

Nut translation: ☒ MOER M

Washer translation: ☒ RING M

Stud translation ☒ STUD

Export ☒ Bolts, rings and nuts

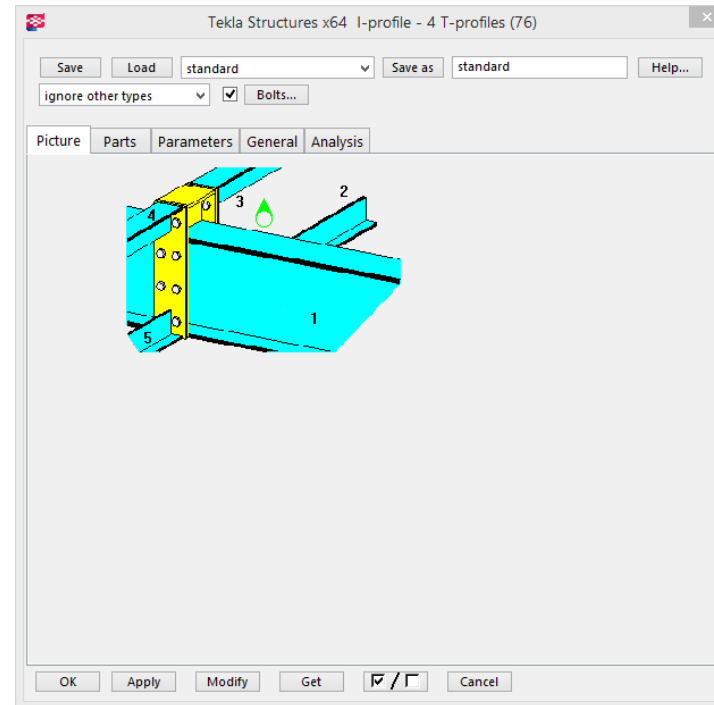
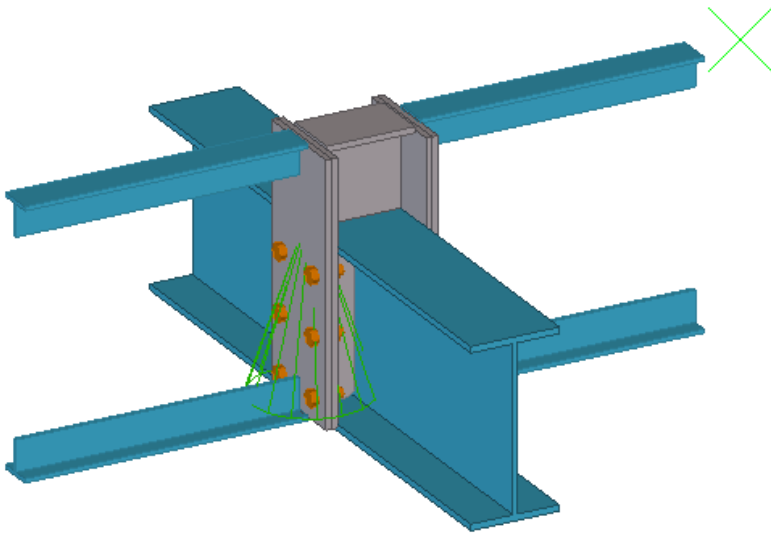
Open generated report ☒ Yes

Create Apply Cancel



I-profile - 4 T-profile (76)

- Creates a connection between a I-beam and four T-beams.





Weld List (76)

> Creates a weld list.

laslijst01.txt - Kladblok										
Bestand Bewerken Opmaak Beeld Help										
Pos nr	Tek. nr	VERBOND. DELEN	Locat.	Lasnr.	Type	Afm. (mm)	Lengte (mm)	Las-id. T.S.	Hoek (°)	
0(?)		0(?)			W10	0.0	4036.4	60302	2.8	
0(?)		0(?)			W10	0.0	4036.4			
0(?)		0(?)			W10	0.0	3990.0	60290	0.0	
0(?)		0(?)			W10	0.0	3990.0			
0(?)		0(?)			W10	0.0	4036.9	59997	2.8	
0(?)		0(?)			W10	0.0	3990.0			
0(?)		0(?)			W10	0.0	3990.0	59984	0.0	
0(?)		0(?)			W10	0.0	3990.0			
0(?)		0(?)			W10	0.0	200.0	60453	56.0	
0(?)		0(?)			W10	0.0	200.0			
0(?)		0(?)			W10	0.0	156.9	60408	26.2	
0(?)		0(?)			W10	0.0	156.9			
0(?)		0(?)			W10	0.0	476.8	60438	85.0	
0(?)		0(?)			W10	0.0	476.8			
0(?)		0(?)			W10	0.0	200.0	60446	85.0	
0(?)		0(?)			W10	0.0	200.0			
0(?)		0(?)			W10	0.0	111.3	60395	0.0	
0(?)		0(?)			W10	0.0	111.3			
0(?)		0(?)			W10	0.0	354.5	60123	82.2	
0(?)		0(?)			W10	0.0	354.5			
0(?)		0(?)			W10	0.0	476.8	60140	85.0	
0(?)		0(?)			W10	0.0	476.8			

Tekla Structures x64 Weldreport (76)

Save Load standard Save as standard Help...

Parts Configuration

Output file ☒ laslijst.txt

Create from ☒ selected parts

Title 1 ☒

Title 2 ☒

Title 3 ☒

CONSTRUSOFT

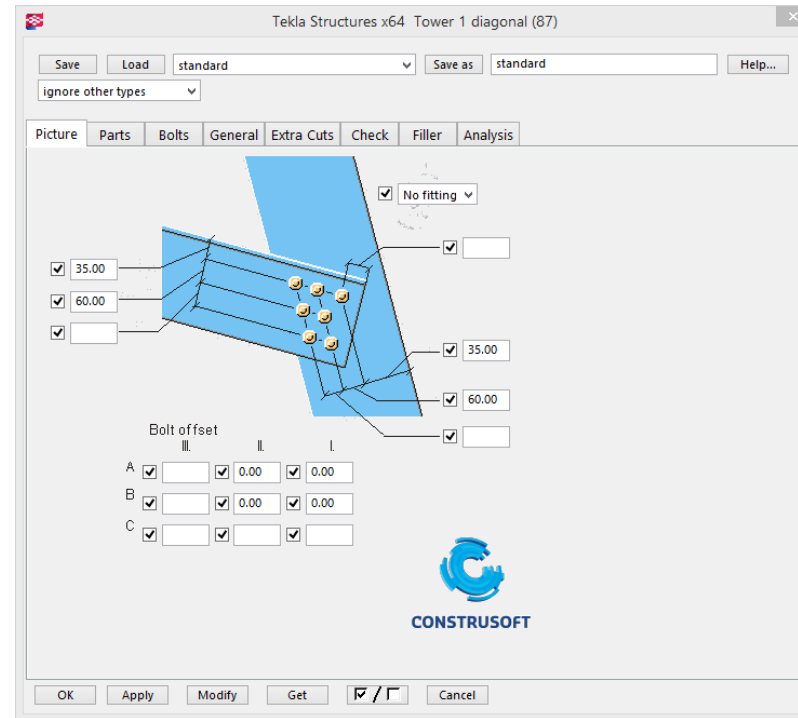
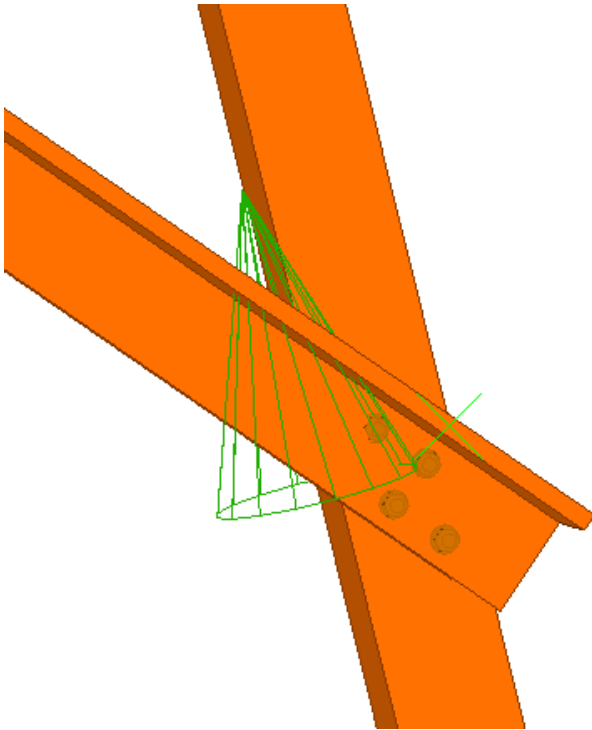
Create Apply Modify Get ☒ / ☐ Cancel





Tower 1 diagonal (87)

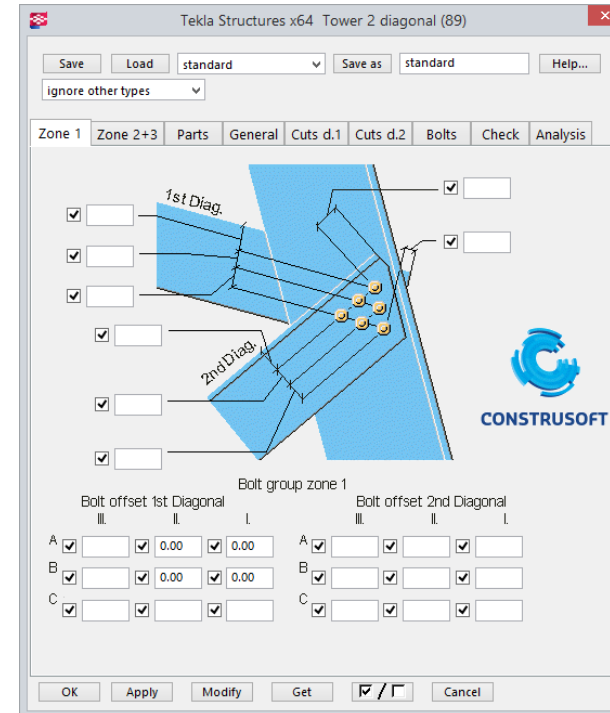
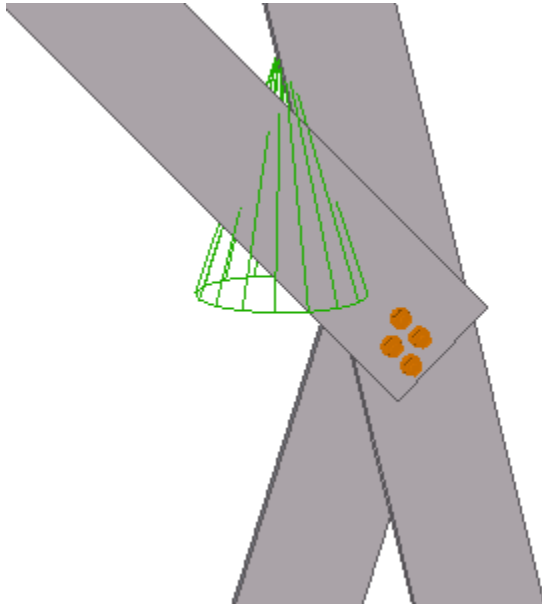
- Creates a connection between two diagonal beams.





Tower 2 diagonals (89)

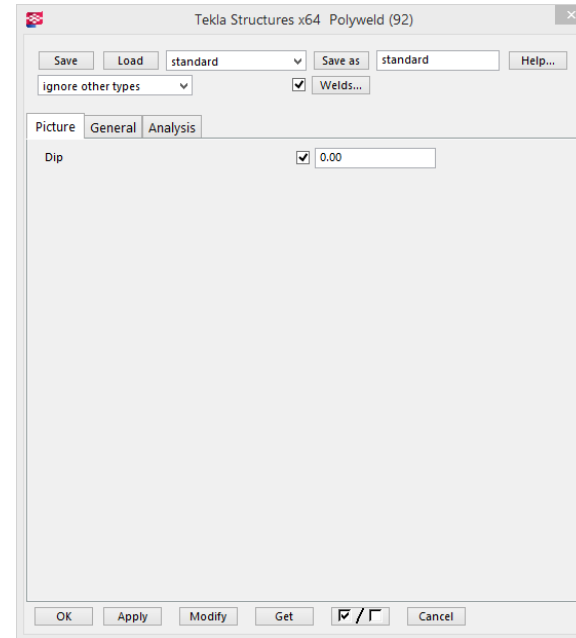
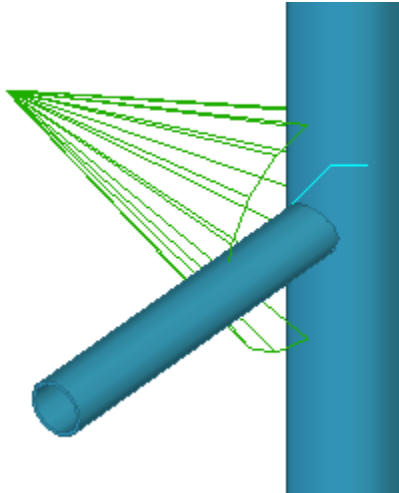
- Creates a connection between three diagonal beams.





Polyweld (92)

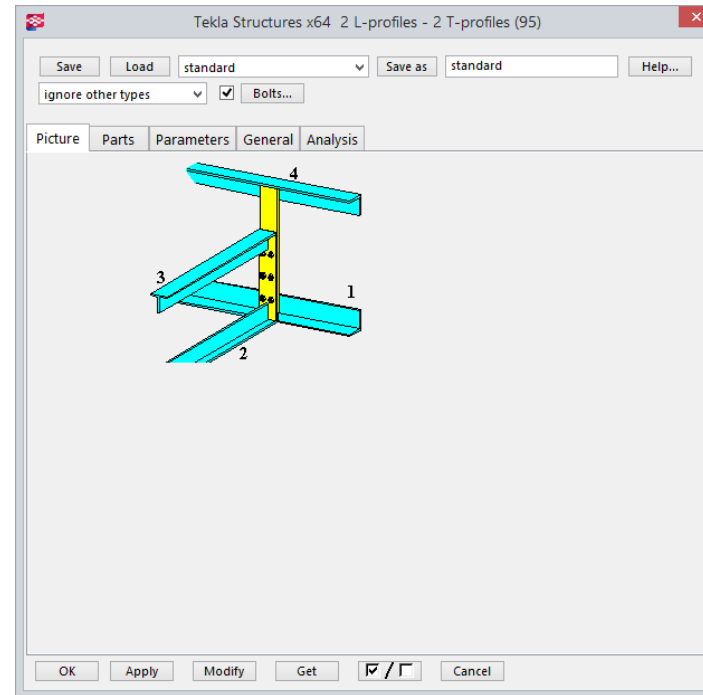
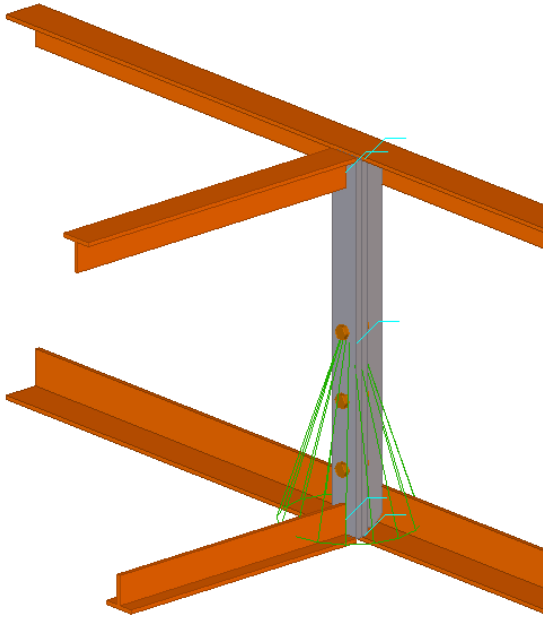
- Creates a connection between parts with a polyweld.





2 L-profiles – 2 T-profiles (95)

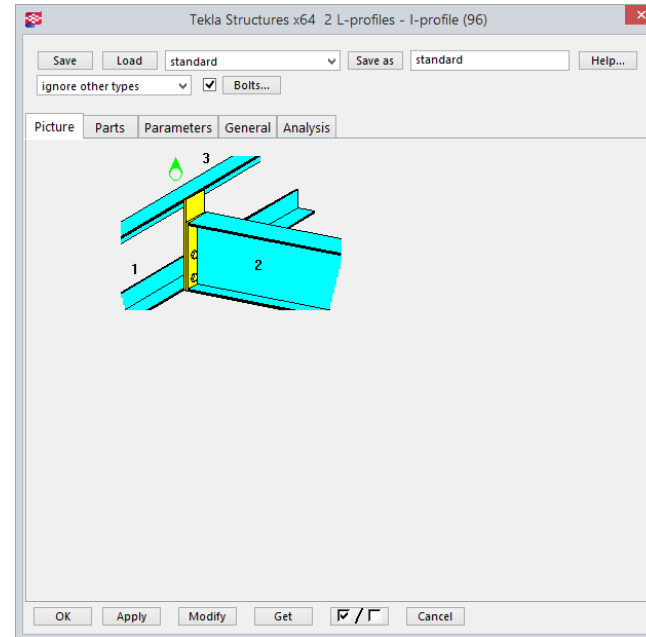
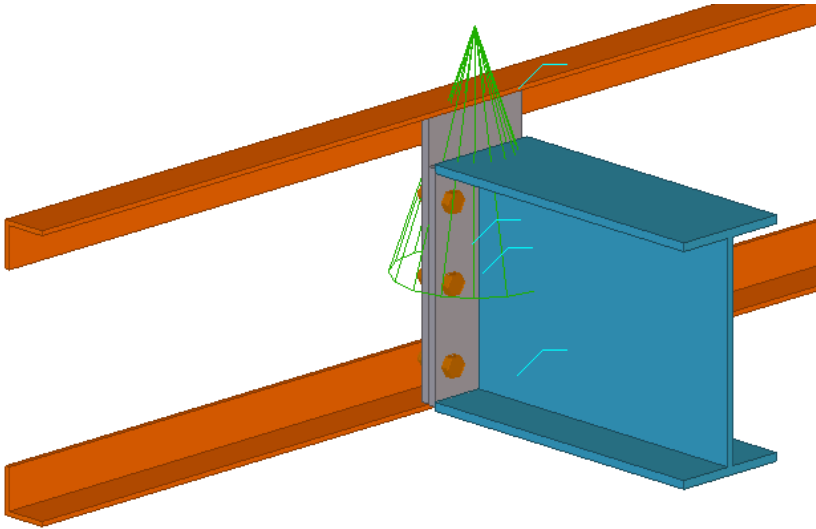
- Creates a connection between two L-beams and two T-beams.





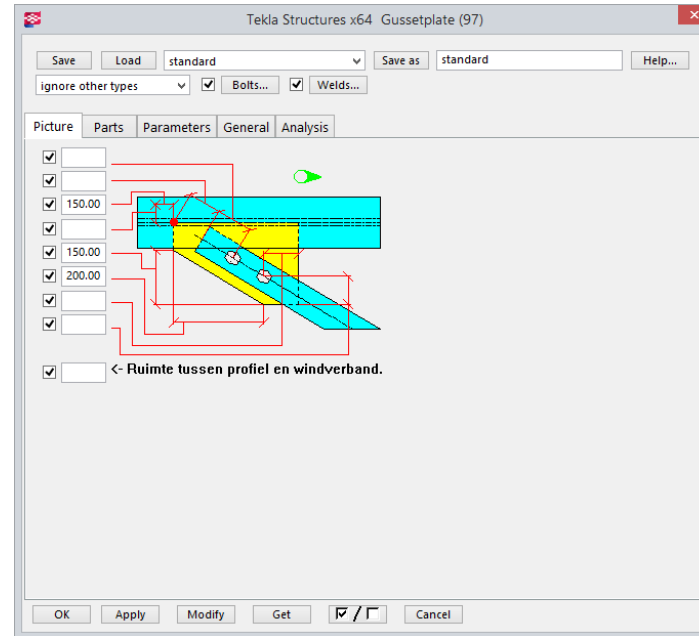
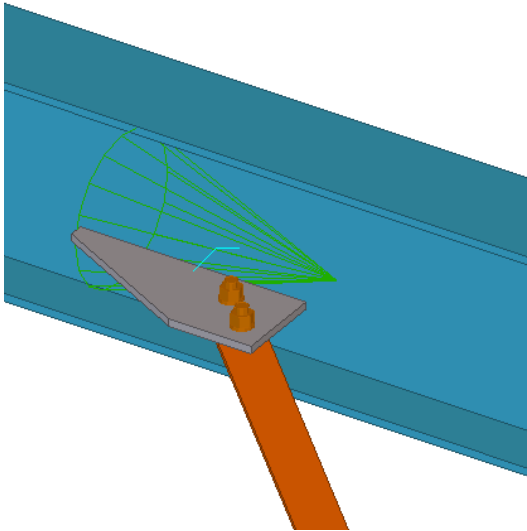
2 L-profiles – I-profile (96)

- Creates a connection between two L-beams with one I-beam.



Gussetplate (97)

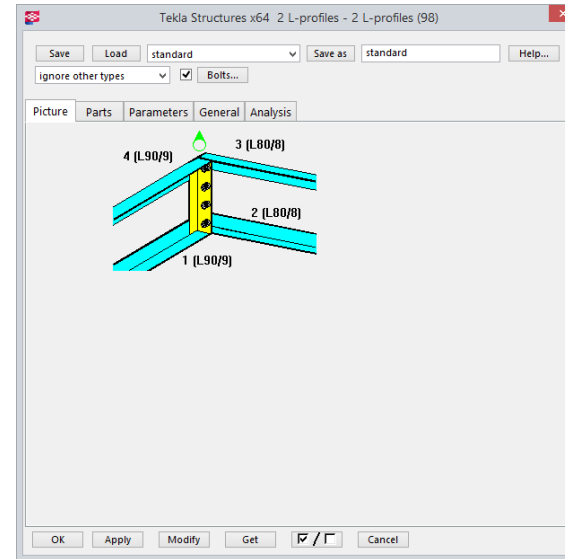
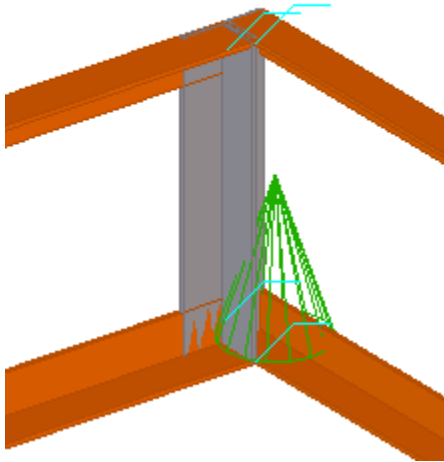
- > Creates a connection between a beam and a windbracing. The connection is made with a plate that is added.





2 L-profiles - 2 L-profiles (98)

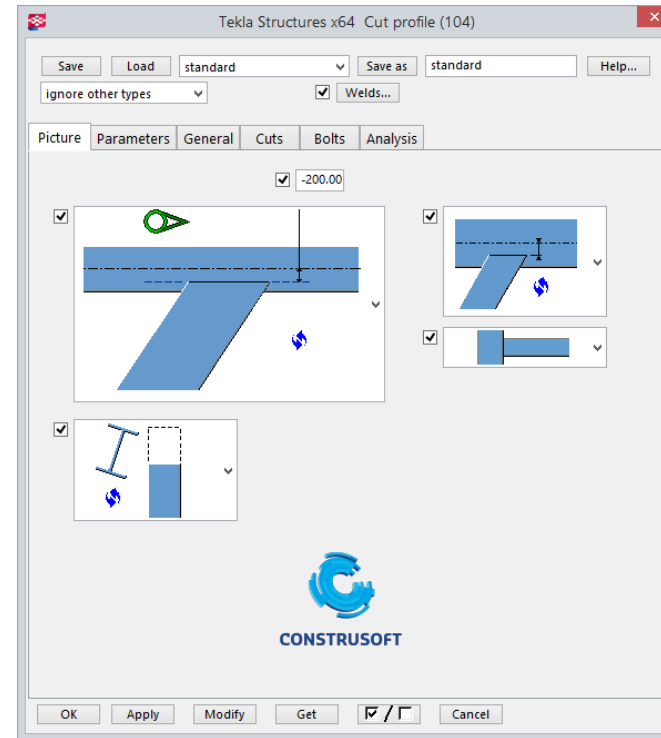
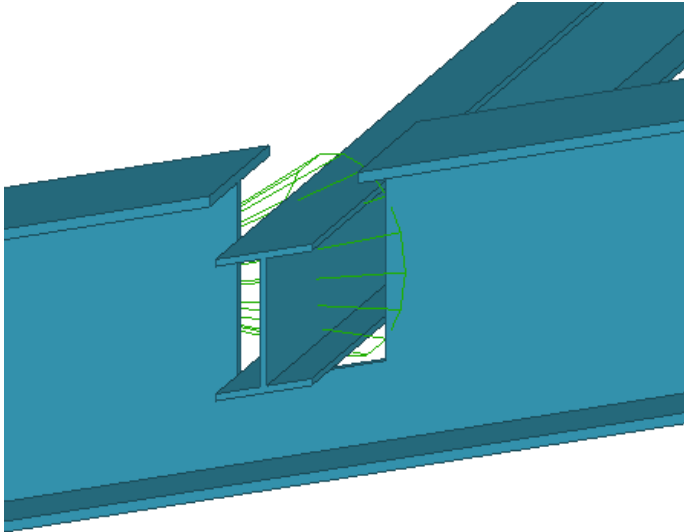
- Creates a connection between two pairs of L-beams. They are connected with L-beams.





Cut profile (104)

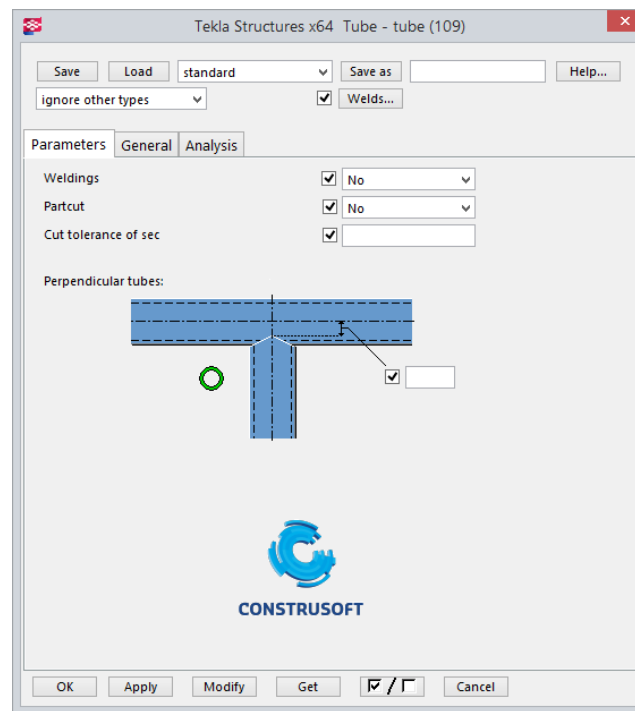
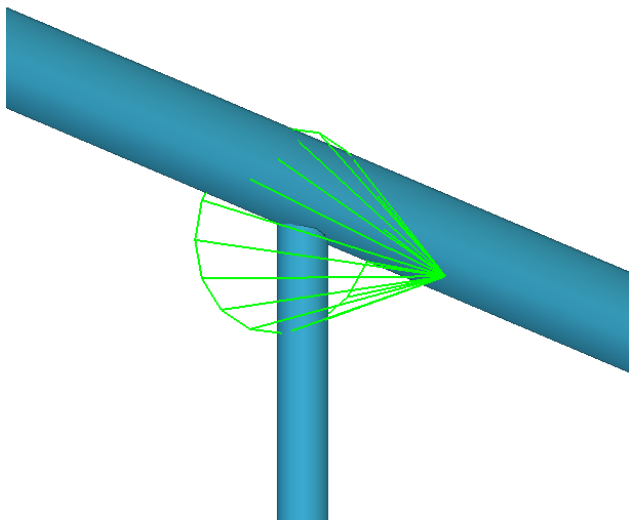
- Creates a cut section on the main part for the secondary part to go through.





Tube – tube (109)

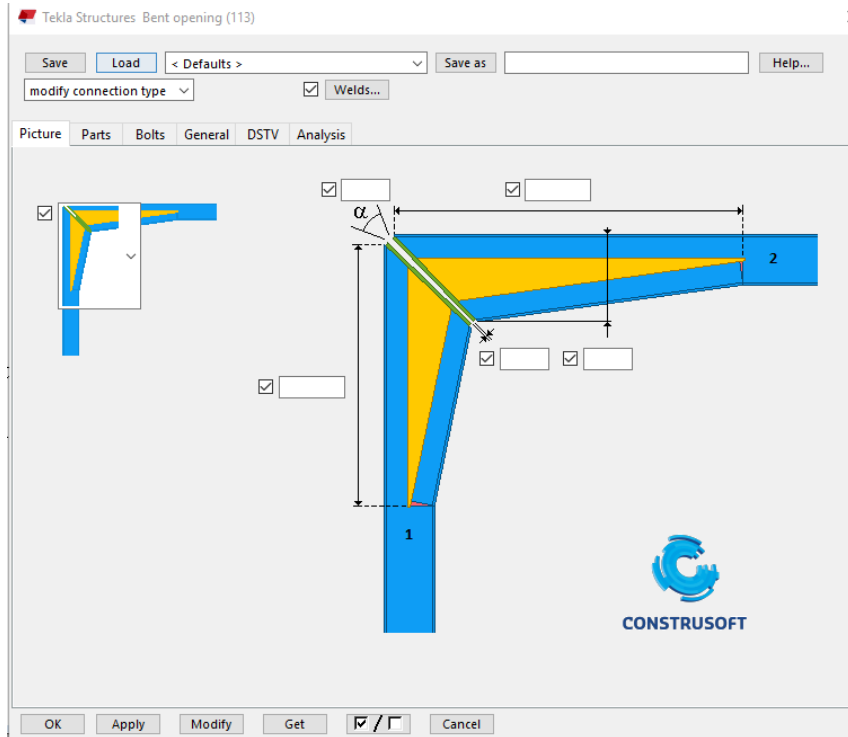
- Creates a connection between two tubes.





Bent Opening (113)

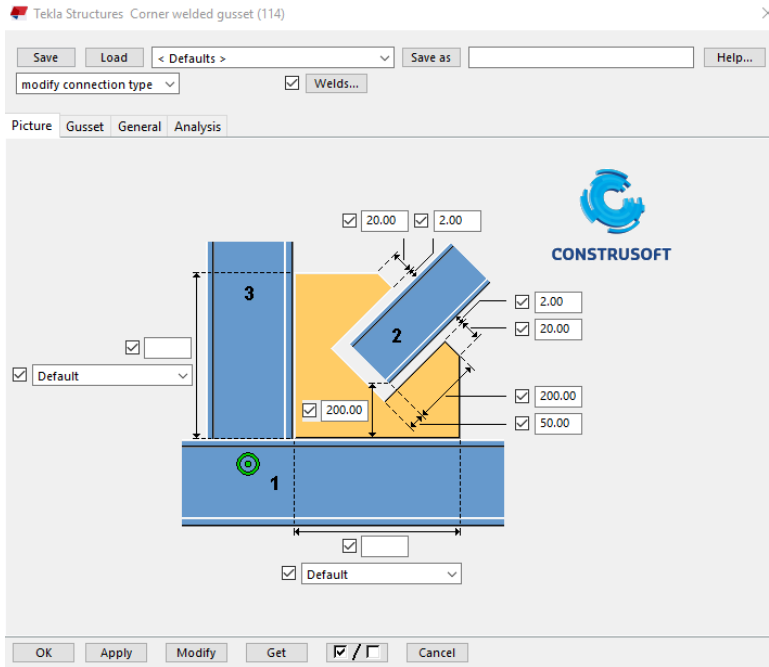
- Creates a bent opening with DSTV Export.





Corner Welded Gusset (114)

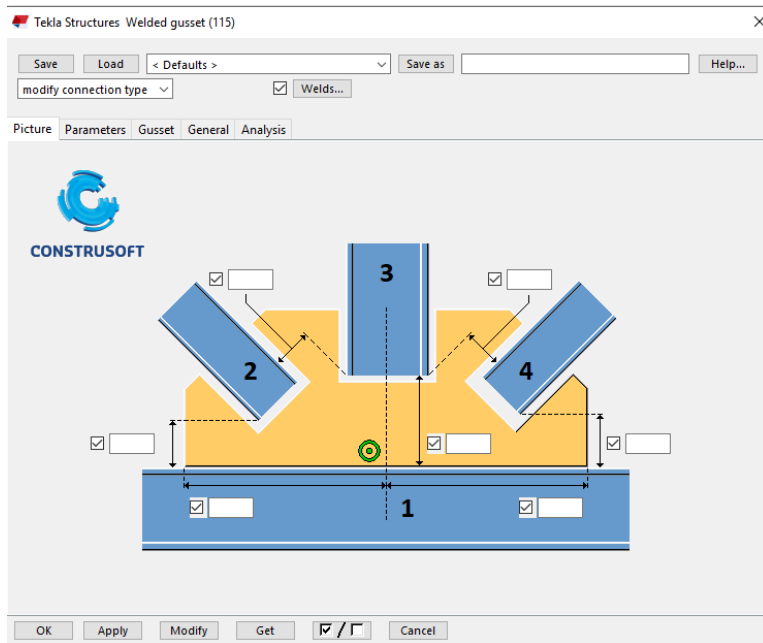
- Creates a Corner welded gusset with offsets.





Welded Gusset (115)

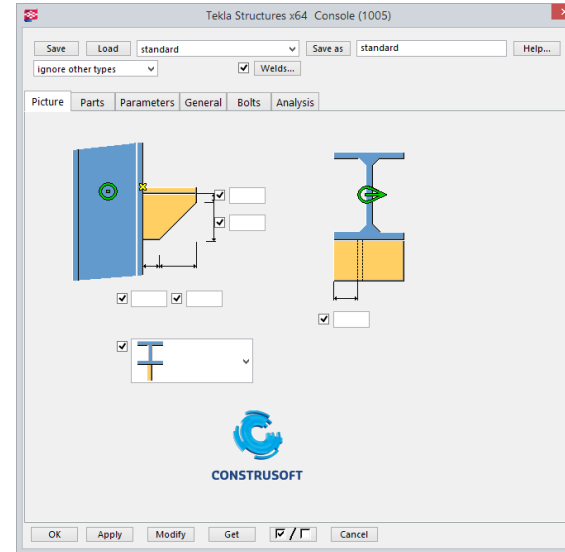
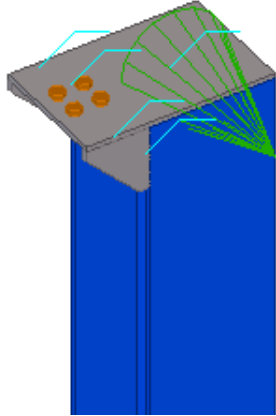
> Creates a welded gusset with offsets.





Console (1005)

- Creates a bracket profile against a column. The console comprises a horizontal plate and one or two vertical stiffeners. All parts are welded to the main part. In the cover plate a hole pattern can be applied.

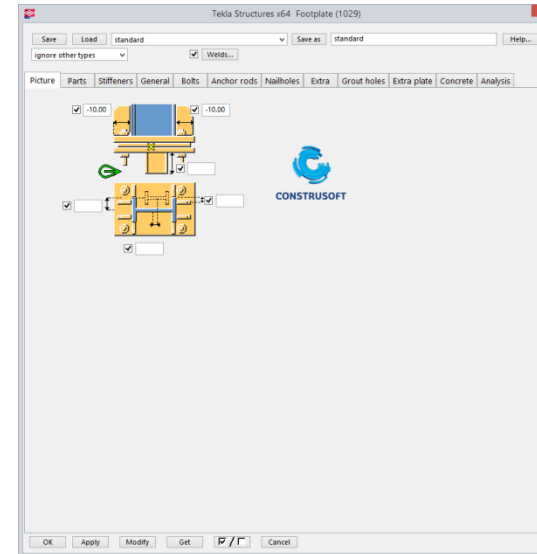
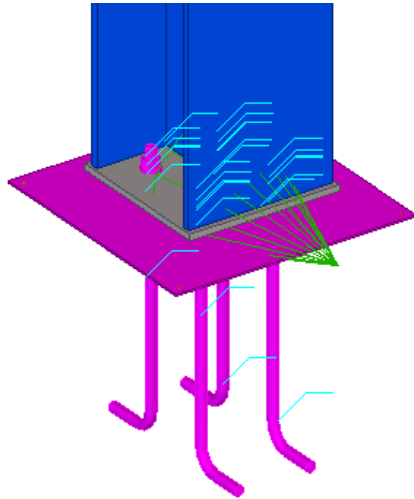






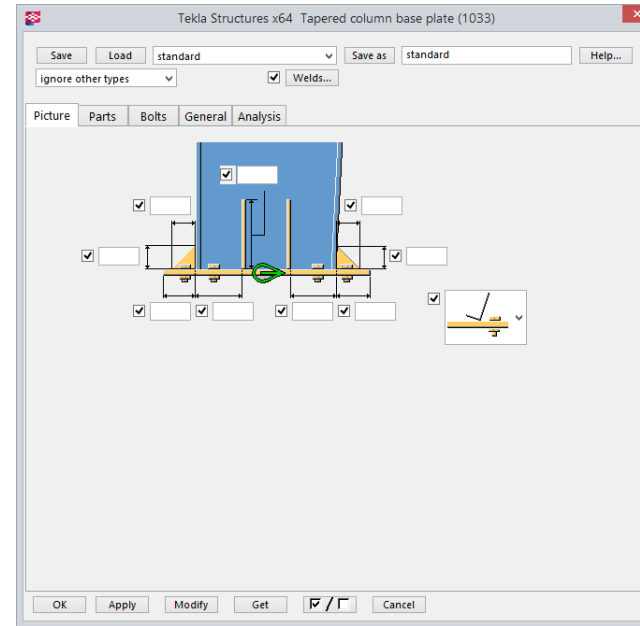
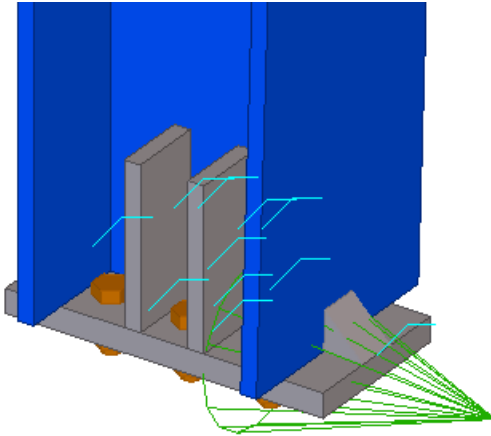
Footplate (1029)

- Creates a footplate detail below a column. In addition to the base plate, the following objects can be modeled: stiffeners, bolts, anchors, mold plate and cut-outs in the application of a concrete column.



Tapered column base plate (1033)

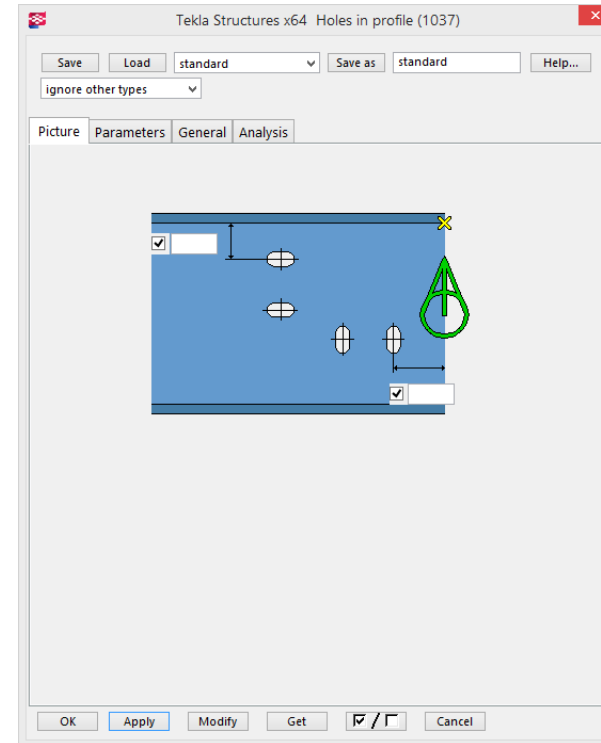
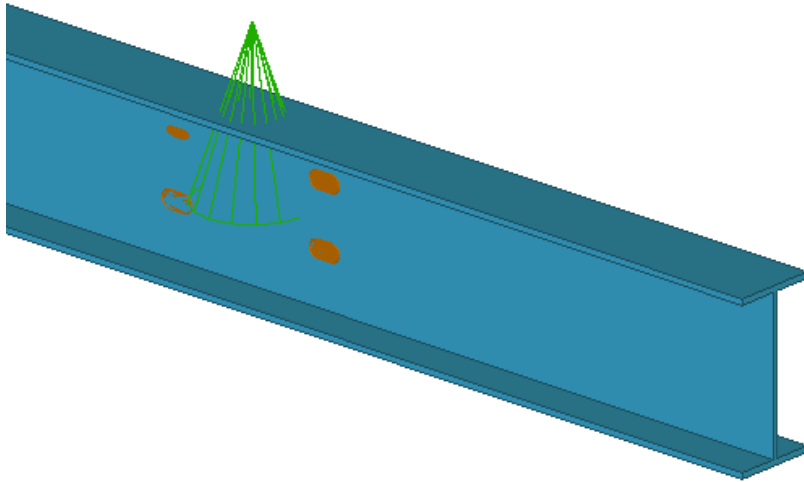
- Creates a baseplate under a plate column. The base plate may include a hole or bolt pattern, stiffeners can be added.





Holes in a profile (1037)

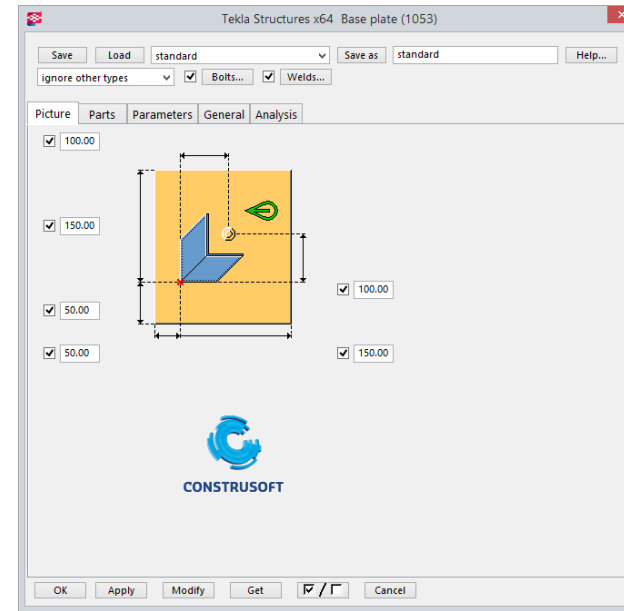
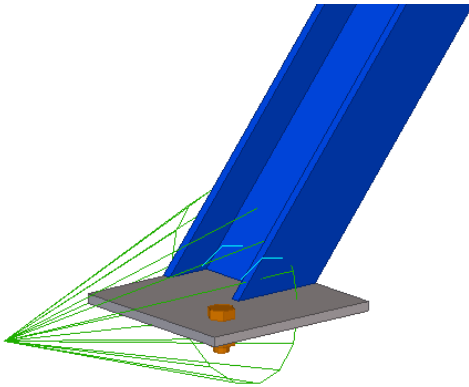
- > Creates a holes in selected profile.





Base plate (1053)

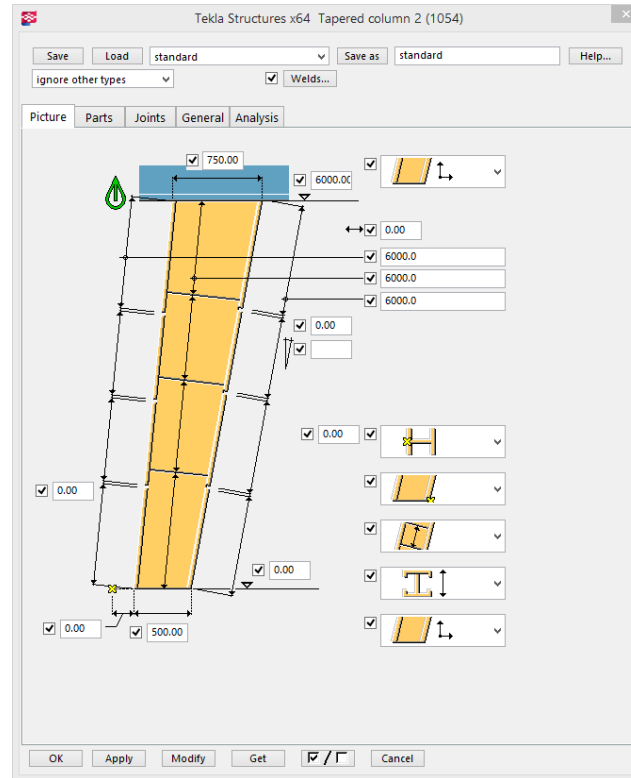
- Creates a base plate under a beam.





Tapered column (1054)

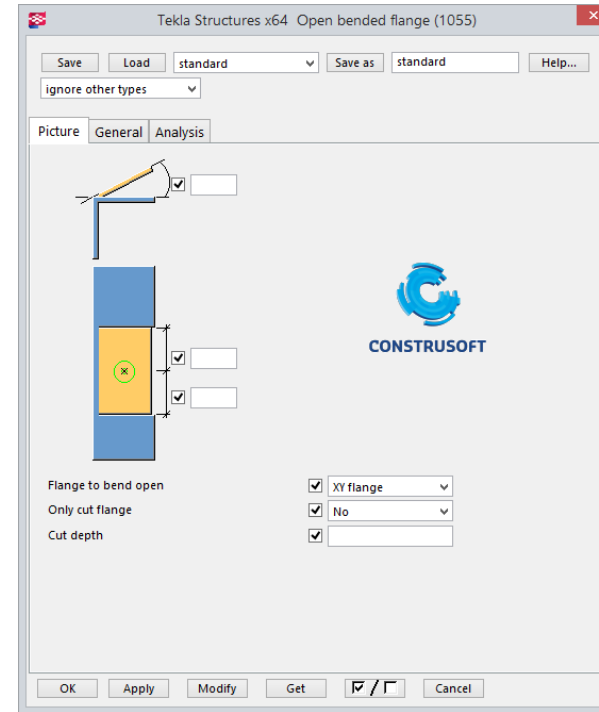
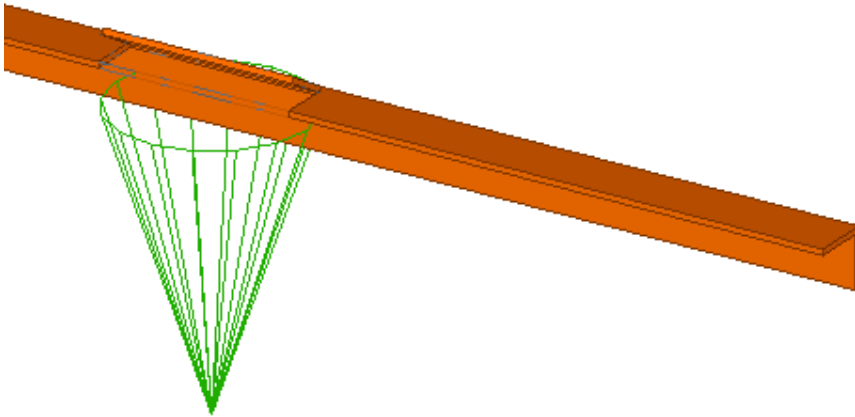
- Creates a tapered column under a beam.





Open bended flange (1055)

- Creates a open bended flange.





Unfold colled rolled profiles (22)

- Creates a Poly-profile from a parametric profiles. The aim is to make a unfold drawing of the profile





ML090 – CS Pinnacle Export

- > This tool can export beams for Pinnacle cold form punching machine

CS Pinnacle Export (ML090)

Save Load standard Save As standard Help

General Operations About

Export Selected beams

Filter standard

Filter operation Filter is not used

Show log No

Show event types All

Overwrite log file Yes

Export path
C:\TeklaStructuresModels\bungalow20161222\Pinnacle

Idle

Export Close

CS Pinnacle Export (ML090)

Save Load standard Save As standard Help

General Operations About

Source of operation name Negative part UDA UDA name LSFRAMING_TYPE

Operation	Predefined name	Use	Operation names
Dimple	Dimple	<input checked="" type="checkbox"/>	
Chamfer	Chamfer	<input checked="" type="checkbox"/>	
Swage	Swage	<input checked="" type="checkbox"/>	
Lip cut	LipCut	<input checked="" type="checkbox"/>	LIP_CUT
Bolt hole	BoltHole	<input checked="" type="checkbox"/>	BOLT_HOLE BOLT
Service hole	ServiceHole	<input checked="" type="checkbox"/>	SERVICE_HOLE
Utility service hole	UtilityServiceHole	<input checked="" type="checkbox"/>	U_SERVICE_HOLE
Index hole	IndexHole	<input checked="" type="checkbox"/>	INDEX_HOLE
Right flange cut	RightFlangeCut	<input checked="" type="checkbox"/>	RIGHT_FLANGE_CUT
Left flange cut	LeftFlangeCut	<input checked="" type="checkbox"/>	LEFT_FLANGE_CUT
Notch cut	NotchCut	<input checked="" type="checkbox"/>	NOTCH NOTCH_CUT
Crimp	Crimp	<input checked="" type="checkbox"/>	

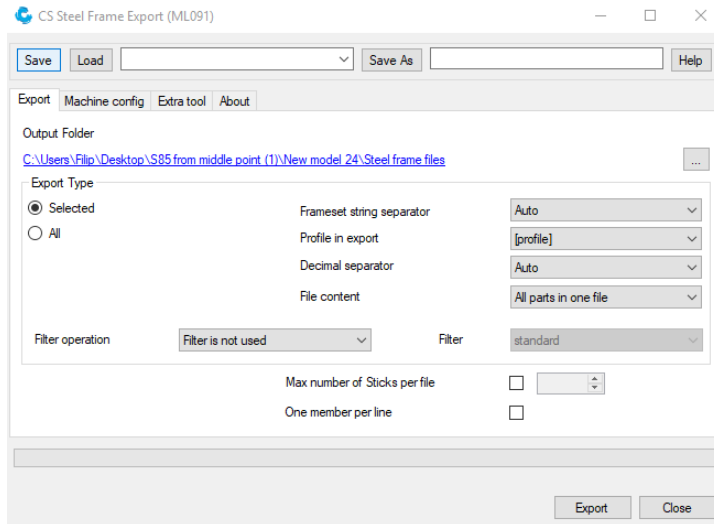
Export Close





ML091 – Steel Frame Export

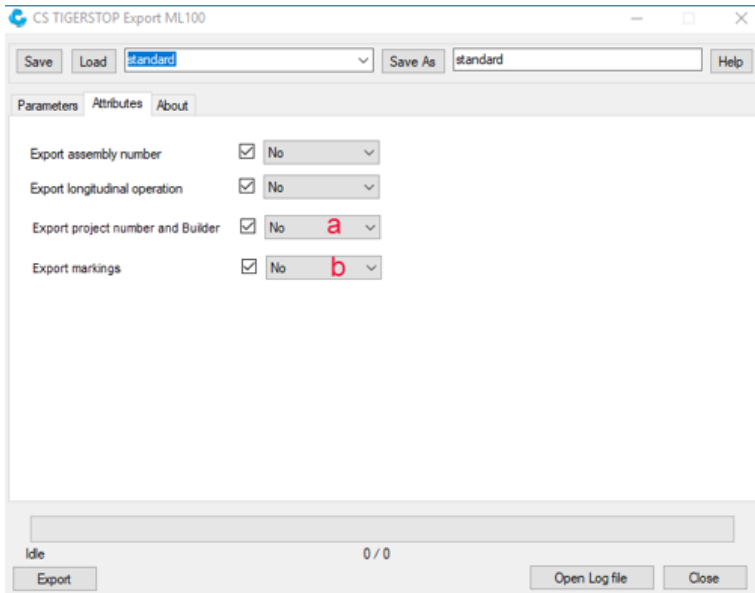
- > Steel frame export all or all parts and machine config.





ML100 – Tigerstop export

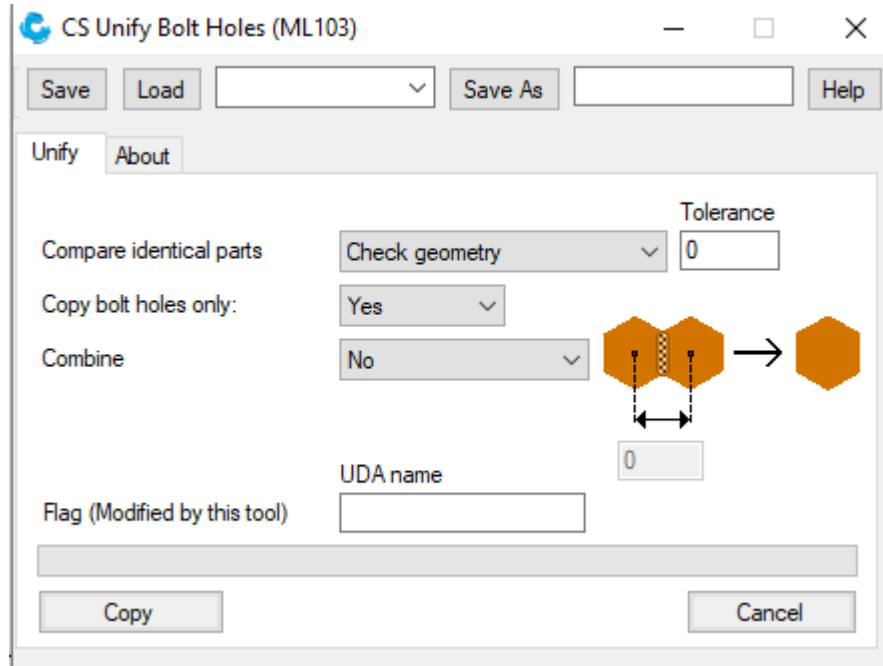
> Export to Tigerstop.





ML103 – Unify Bolt Holes

- > Unify bolts from one part to another or combine.





Scaffolding beams and columns (m039)


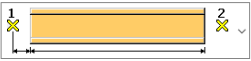
- > Models duplicate profiles which can be connected through a hole pattern.

CS Scaffolding beams and columns (m039)

Save Load standard Save As Help

Picture Holes in profiles Connecting parts UDA About

	t	b	h	Pos No	Material	Name	Class
Profile	<input checked="" type="checkbox"/>	<input type="text"/>	<input type="text"/>	<input checked="" type="checkbox"/>	<input checked="" type="checkbox"/> S235JR	<input checked="" type="checkbox"/>	<input checked="" type="checkbox"/> 1
Profile 2	<input checked="" type="checkbox"/>	<input type="text"/>	<input type="text"/>	<input checked="" type="checkbox"/>	<input type="text"/>	<input checked="" type="checkbox"/>	<input type="text"/>

☒  ☒ 

☒ 20.00 ☒ ☒

On plane ☒ Middle ☒

Rotation ☒ Top ☒

Depth ☒ Middle ☒

Fabricator name ☒


Type ☒

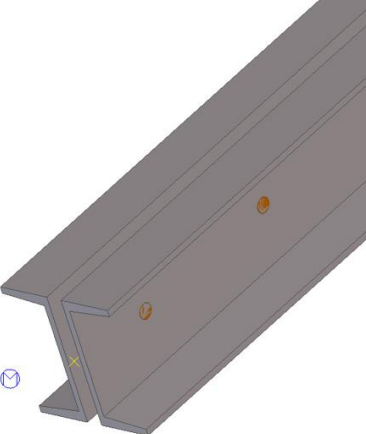
Nomination ☒

Article number ☒

Comment ☒

Create assembly ☒ Yes

OK Apply Modify Get 





Lifting Clamps (m118)

- > Lifting clamps by picking 2 points.

CS Lifting clamps Net m118

Save Help

General Surface treatment About

Clamping position ☒

☒ ☒

Fix distances

Dist. 1 ☒ ☒

Dist. 2 ☒

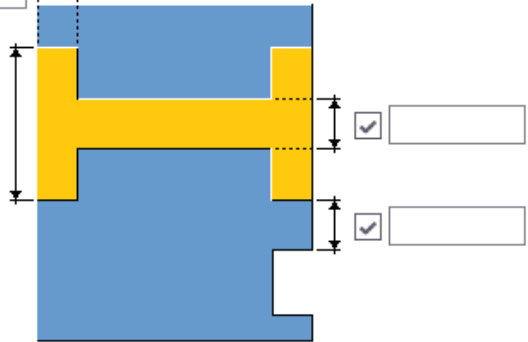
Dist. 3 ☒

Dist. 4 ☒

Dist. 5 ☒

☐ ☐

OK Apply Modify Get ☒ / ☐ Cancel



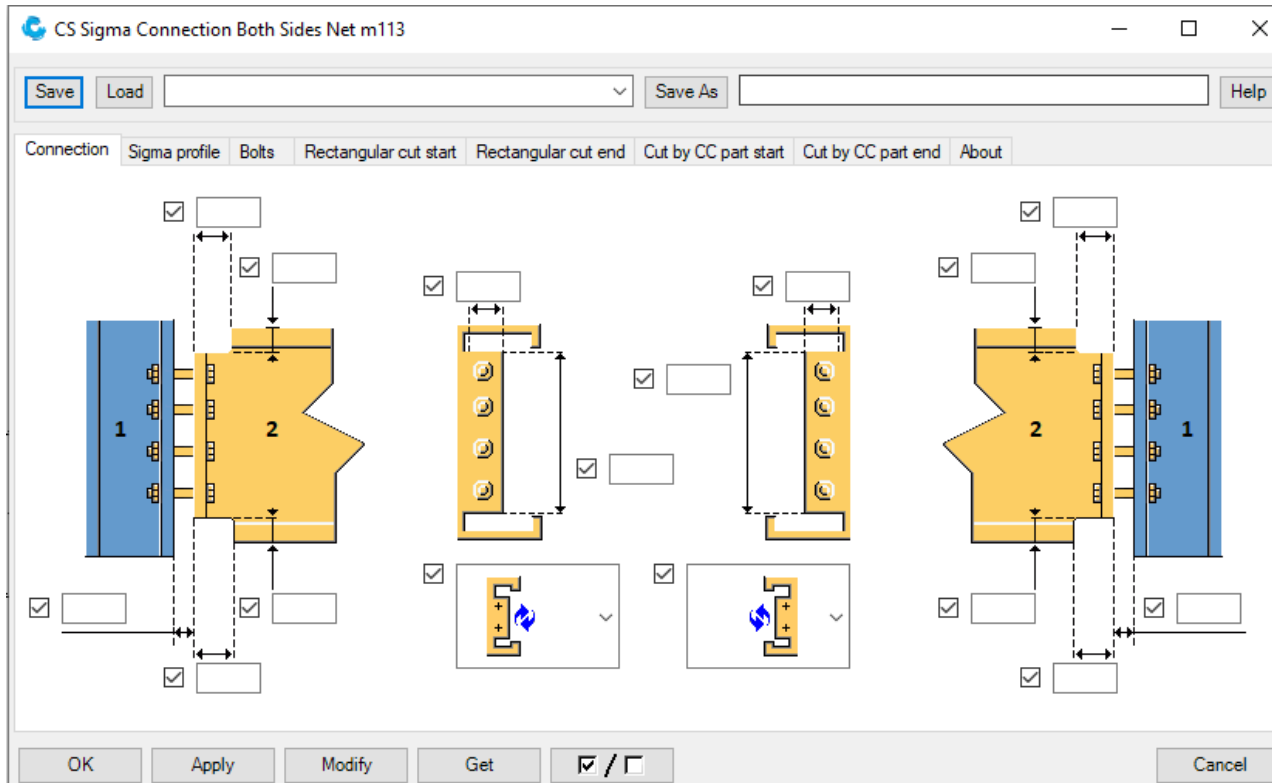
The diagram shows a cross-section of a lifting clamp assembly. A yellow horizontal bar is positioned between two blue vertical blocks. Various dimensions are indicated with arrows and dashed lines, corresponding to the 'Fix distances' listed on the left. Checkboxes are present next to each distance field and for the clamping position.





Sigma Connection on Both sides (m113)

- Creates a sigma connection on both sides by picking 2





Place chamfer (m095)

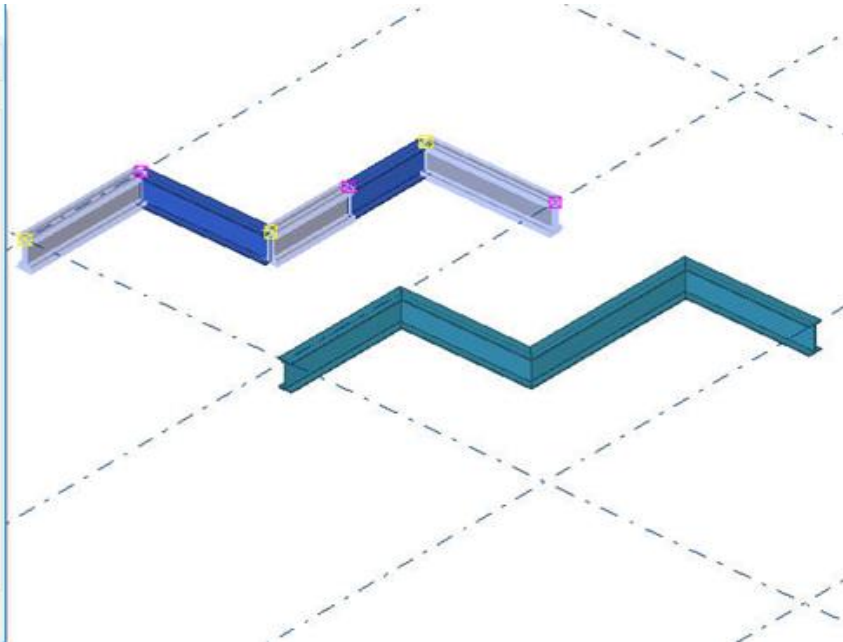
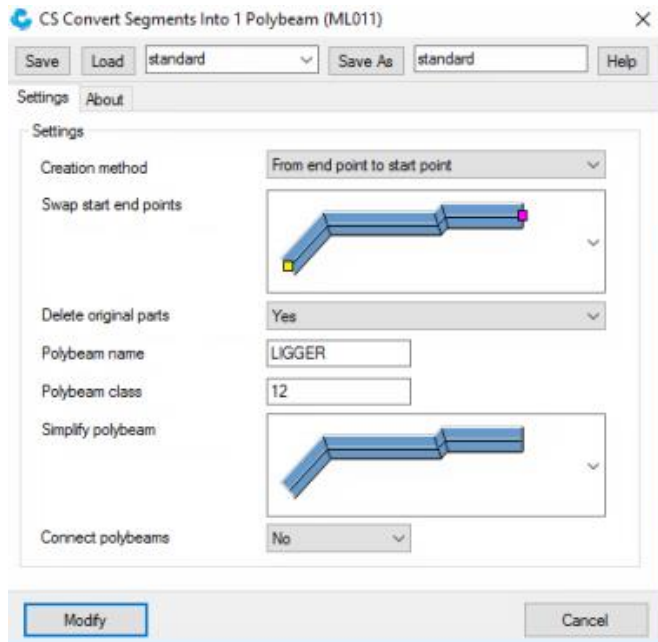
- > Places a chamfer on an object that can be modified with lots of options and features.





ML011 – Convert Segments into 1 Polybeam

- > Adds several separate parts into one polybeam.





ML026 – Scia Steel Export

> Export to CIM steel

CS Scia Steel Export (ML026)

Save Load standard Save As standard Help

Settings Drawings Assemblies/CU Welds About

[PROJECT]

Project-name TS project-name

Description TS project-name

[BUILDING_PART]

Building-part-name Part

Denomination

Export from All parts

Export file

C:\TeklaStructuresModels\2016\New model 3\SciaSteelExport.bt

Open export file with WordPad Yes

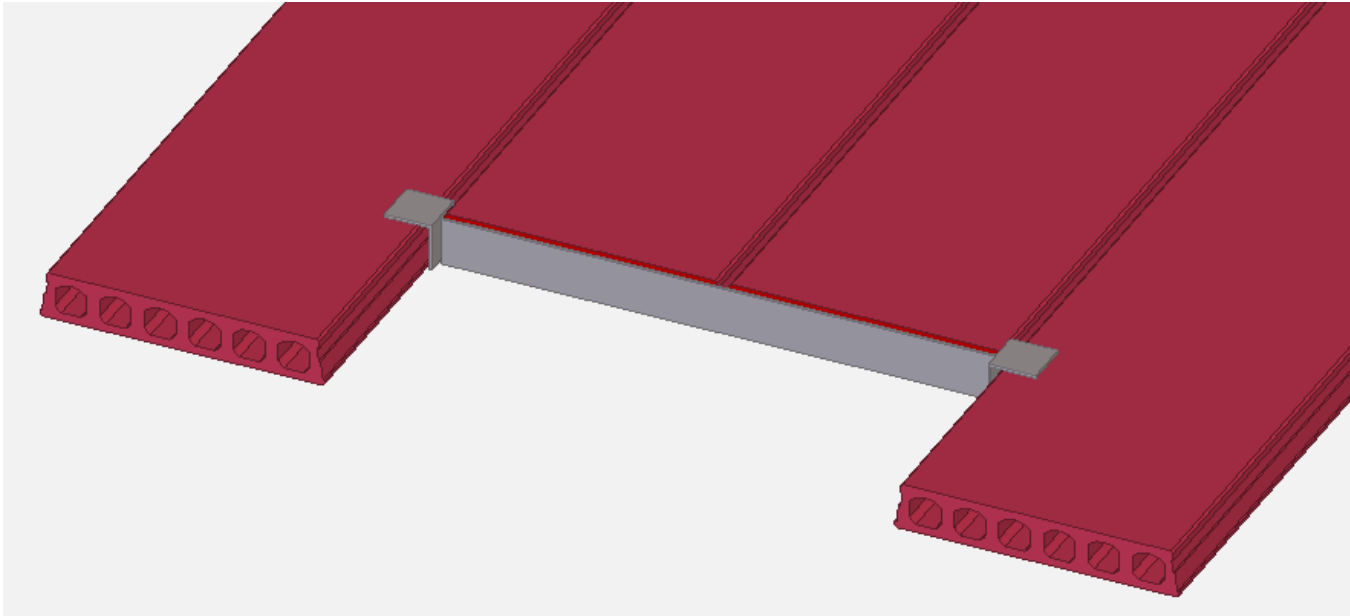
Export Close





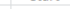
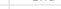

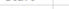








Trimming steel (m036)

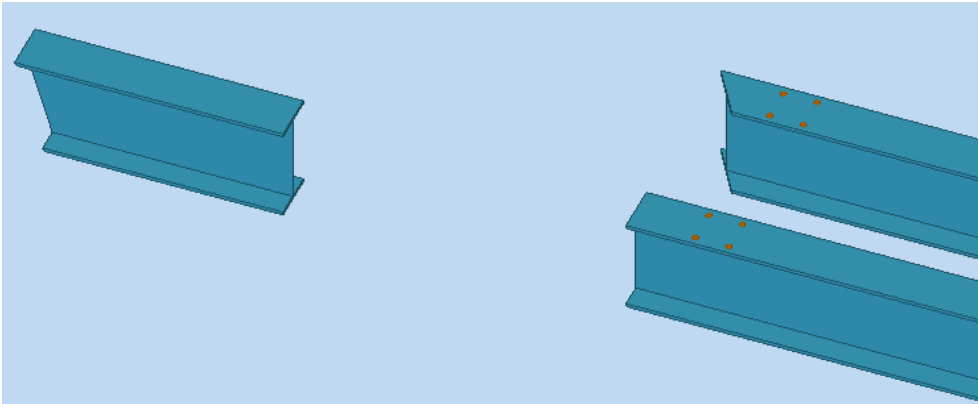
- > Select the parts (at least 3), close with middle mouse button. Then click a point where the trimmer iron should be placed.





ML012 – Saw Report

TEKLA STRUCTURES SAW-REPORT														
Model:	Opfrisdagen 2012						Date:	06.10.2012						
							Time:	12:22						
Project-nr:														
Profile	Pos	Ass-pos	Number	Length (mm)	Surface (m2)	Weight (kg)	Material	Angle	Shape start front	Shape end front	Angle	Angle	Shape start top	Shape end top
IPE300	L17	L17	1	1700	2	72	S235JR	0			0	0		
IPE300	L19	L19	1	1700	2	72	S235JR	0			0	32		
IPE300	L66	L66	1	800	1	34	S235JR	16			0	0		
			3	4200	5	177								
		Total	3	4200	5	177								



CS Saw Report ML012

Opslaan Laden standard Opslaan als standard Help...

Scan Export data Sorteer data Export naar UDA Info

Maak van geselecteerde

Inclusief object typen

☒ Liggers en kolommen standard ☐ Ook plaat profielen Nee

☐ Plaatprofielen standard

Scanlengte 500 mm

Scan profieldoorsneden Met negatieve volumes

Configuratiebestand
C:\TeklaStructures\21.0\environments\netherlands\system\conf_scan_planes.bt

Standaardmateriaal

☒ Hout ☒ Beton

☒ Staal ☒ Diversen

Exportbestand
C:\TeklaStructures\BeamExtruder_210_4_Installer_x64\ExtrusionTestModel\Saw_reports\SREx

☒ Toon in MS Excel

Exporteren Sluiten





Create curve (m119)

- > Creates a polybeam or construction lines curve by picking polygon points.

CS Create Curve Net m119

Save Help

General Properties About

Curve type ☒

Create ☒ ☒

Accuracy ☒ 29

Segments ☒ ☒

Create construction points ☒

Offset

Create second curve ☒ ☒

Create third curve ☒ ☒ Extension

Connect both curves with lines ☒ ☒ ☒

OK Apply Modify Get ☒ / ☐ Cancel





Steel Frame Connection (j092)

Steel frame connection with lipcut, notch, swage and dimples.

CS Steel frame connection (j092)

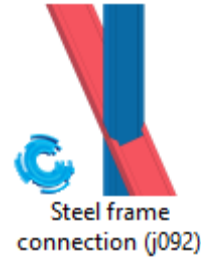
Save Load Save As Help

Parameters Tool sizes About

Cutback type	<input checked="" type="checkbox"/>	<input type="text"/>	<input checked="" type="checkbox"/>	
Cutback distance	<input checked="" type="checkbox"/>	<input type="text"/>		
Dimple backmark	<input checked="" type="checkbox"/>	<input type="text"/>		
Add Dimples	<input checked="" type="checkbox"/>	<input type="text"/>		
Add Lipcut	<input checked="" type="checkbox"/>	<input type="text"/>		
Add Notch	<input checked="" type="checkbox"/>	<input type="text"/>		
Add Swage	<input checked="" type="checkbox"/>	<input type="text"/>		
Use truss tool	<input checked="" type="checkbox"/>	<input type="text"/>		
Truss cut size	<input checked="" type="checkbox"/>	<input type="text"/>		

* No dimples means no assembly

OK Apply Modify Get ☒ / ☐ Cancel





Steel Frame Bolt (m105)

> Metal framing bolt.

A screenshot of a software dialog box titled "CS Metal Framing Bolt m105". The dialog has a standard Windows-style title bar with minimize, maximize, and close buttons. Below the title bar is a toolbar with "Save", "Load", a dropdown menu, "Save As", and "Help" buttons. The main area contains two tabs: "Settings" (selected) and "About". Under the "Settings" tab, there are two rows of controls: "Diameter" with a checked checkbox and an empty text field, and "Name" with a checked checkbox and an empty text field. At the bottom of the dialog is a row of buttons: "OK", "Apply", "Modify", "Get", a checkbox with a slash, and "Cancel".

CS Metal Framing Bolt m105

Save Load [dropdown] Save As Help

Settings About

Diameter ☒ [text field]

Name ☒ [text field]

OK Apply Modify Get ☒ / ☐ Cancel





Steel Frame Brace (m109)

> Metal framing brace.

CS Metal Framing Brace m109

Save Load [dropdown] Save As [dropdown] Help

Parameters About

Flip Rotation ☒ No [dropdown]

Flip Side ☒ No [dropdown]

Settings ☒ [dropdown]

Offset Top ☒ [text box]

Offset Bottom ☒ [text box]

OK Apply Modify Get ☒ / [checkbox] Cancel





Steel Frame Extra profile (m110)

> Metal Framing Extra Profile.

A screenshot of a software dialog box titled "CS Metal Framing Extra Profile m110". The dialog has a standard Windows-style title bar with minimize, maximize, and close buttons. Below the title bar is a toolbar with "Save", "Load", a dropdown menu, "Save As", another dropdown menu, and a "Help" button. The main area of the dialog is divided into two tabs: "Parameters" (selected) and "About". Under the "Parameters" tab, there are several settings: "Flip Rotation" with a checked checkbox and a "No" dropdown; "Flip Side" with a checked checkbox and a "No" dropdown; a "FirstConnection" section containing "Setting" and "MainPart", both with checked checkboxes and dropdown menus; and a "SecondConnection" section containing "Setting" and "MainPart", also with checked checkboxes and dropdown menus. At the bottom of the dialog is a row of buttons: "OK", "Apply", "Modify", "Get", a checkbox with a slash, and "Cancel".

CS Metal Framing Extra Profile m110

Save Load [dropdown] Save As [dropdown] Help

Parameters About

Flip Rotation ☒ No [dropdown]

Flip Side ☒ No [dropdown]

FirstConnection

Setting ☒ [dropdown]

MainPart ☒ [dropdown]

SecondConnection

Setting ☒ [dropdown]

MainPart ☒ [dropdown]

OK Apply Modify Get ☒ / ☐ Cancel





Steel Frame Service Hole (m106)

> Metal Framing Service Hole.

A screenshot of a software dialog box titled "CS Metal Framing Service Hole m106". The dialog has a standard Windows-style title bar with minimize, maximize, and close buttons. Below the title bar is a toolbar with buttons for "Save", "Load", a dropdown menu, "Save As", and "Help". The main area of the dialog is divided into two tabs: "Parameters" (selected) and "About". Under the "Parameters" tab, there are three rows of settings, each with a checked checkbox and an adjacent text input field: "Diameter", "Name", and "Length". At the bottom of the dialog, there is a row of buttons: "OK", "Apply", "Modify", "Get", a checkbox with a slash (checked), and "Cancel".

CS Metal Framing Service Hole m106

Save Load [Dropdown] Save As Help

Parameters About

Diameter ☒ [Text Box]

Name ☒ [Text Box]

Length ☒ [Text Box]

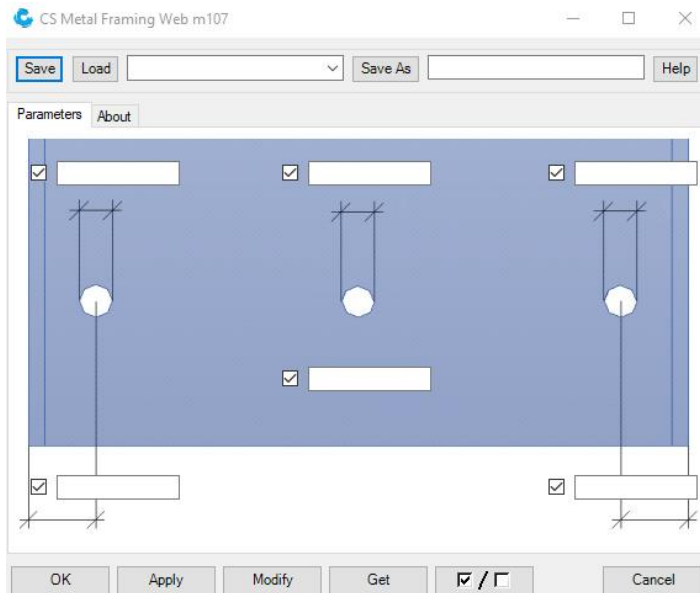
OK Apply Modify Get ☒ / ☐ Cancel





Steel Frame Web (m107)

- Metal Framing web with offsets.





Steel Frame Web Slot (m108)

> Metal Frame Web Slot.

CS Metal Framing Web Slot m108

Save Load Save As Help

Parameters About

Diameter ☒

Length ☒

Name ☒

OK Apply Modify Get ☒ / ☐ Cancel





Convert profile to plates (m094)


> Convert profile to plates.

CS Convert profile to plates Net m094

Save Load Save As Help

Parameters Weld UDA About

Unfolding and corner detail

☒  ☒ X ☒ Y

Placing ☒

Selected parts

Filter operation Filter is not used

Filter standard

Position

Position ☒ Input point

Distance ☒ +X ☒

Bent radius ☒

Offset

X ☒ Y ☒ Z ☒

Position

X ☒ Y ☒ Z ☒

Create on selected objects Pick position

Create or copy

Create assembly by welding ☒

Copy holes ☒

Copy welded parts ☒

Copy attached parts ☒

Bent plate ☒

Cut bent plate using cut plane ☒

Replace by

Plate prefix ☒

Name ☒

Material ☒ Select...


Class ☒

Part prefix ☒

Part start number ☒

Assembly prefix ☒

Assembly start number ☒

OK Apply Modify Get  Cancel





Bolts Between Points (m093)

> Creates bolts between 2 points picked.

Bolts Between Points Net (m093)

Save Load [dropdown] Save As Help

Parameters About

BoltAttributes

- Bolt Size ☒ [dropdown]
- Bolt Standard ☒ 6914 [dropdown]
- Cut length ☒ [text]
- Tolerance ☒ [text]
- Rotation ☒ [dropdown]

BoltGroupAttributes

- Auto detect neighbour parts ☒ [dropdown]
- Start Offset ☒ [text]
- End Offset ☒ [text]
- Offset Y ☒ [text]
- Max Bolt Distance X ☒ [text]
- Bolt Distance Y ☒ [text]
- Extra bolt length ☒ [text]
- Create First ☒ [dropdown]
- Create Last ☒ [dropdown]

Bolt Part Attributes

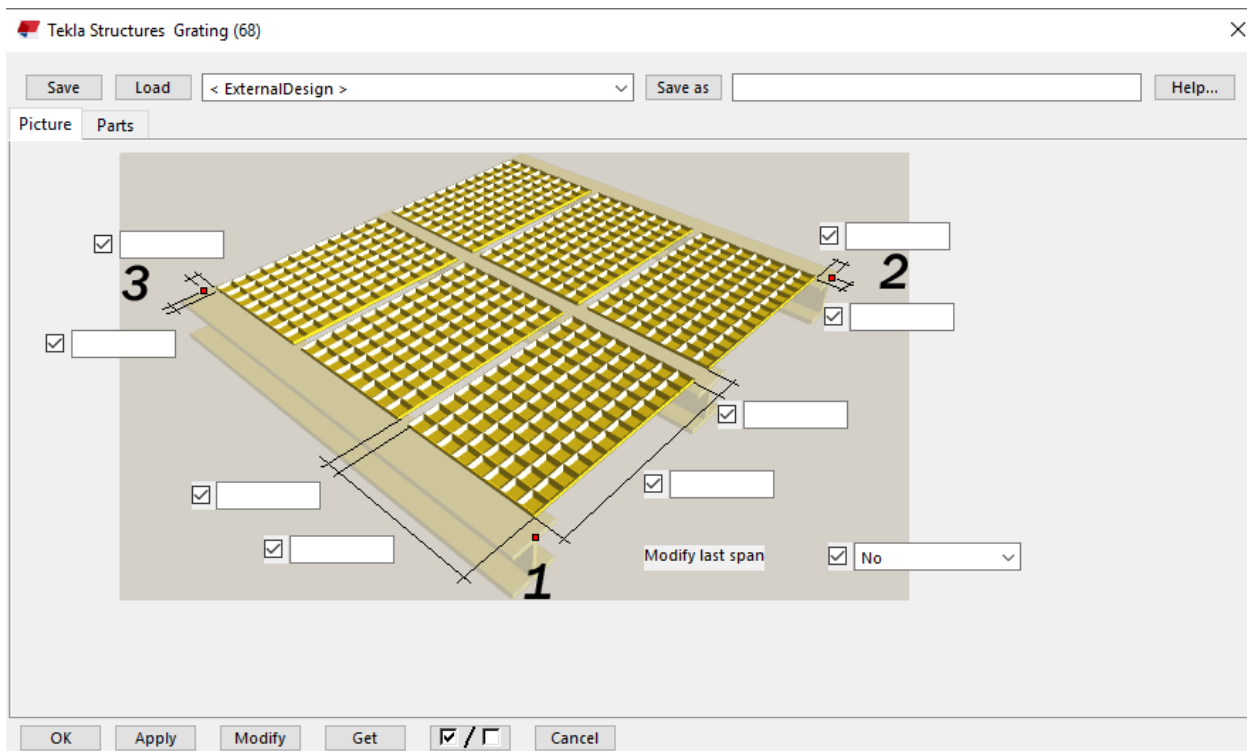
[Diagram of bolt assembly with 6 checkboxes]

OK Apply Modify Get [checkbox /] Cancel



Grating (m099)

> Grating



CONSTRUSOFT



ML065 – CS Wiscon Export

➤ Een tool to create a WISCON export.

```
<HEAD NAME="Construsoft bv" JOB_NR="project number"/>
- <ASSEMBLY>
  - <PART NAME="BELKA STALOWA" ID="PA_000001" TYPE="LEADING_PART" REPRESENTATION="REFERENCE">
    - <FRAME>
      <BASE Z="0" Y="0" X="0"/>
      <RX Z="0" Y="0" X="1"/>
      <RY Z="0" Y="1" X="0"/>
    </FRAME>
    <REFERENCE DATA_TYPE="DSTV-NC" FILE_NAME="MOSES-1.nc"/>
  </PART>
  - <PART NAME="" ID="PA_000002" TYPE="ATTACHED_PART" REPRESENTATION="REFERENCE">
    - <FRAME>
      <BASE Z="300" Y="371" X="2995"/>
      <RX Z="0" Y="-1" X="0"/>
      <RY Z="-1" Y="0" X="0"/>
    </FRAME>
    <REFERENCE DATA_TYPE="DSTV-NC" FILE_NAME="-10.nc"/>
  </PART>
  - <PART NAME="" ID="PA_000003" TYPE="ATTACHED_PART" REPRESENTATION="REFERENCE">
    - <FRAME>
      <BASE Z="240" Y="155" X="3200"/>
      <RX Z="0" Y="0" X="-1"/>
      <RY Z="0" Y="1" X="0"/>
    </FRAME>
    <REFERENCE DATA_TYPE="DSTV-NC" FILE_NAME="-11.nc"/>
  </PART>
</ASSEMBLY>
- <PROCESS>
  - <WELDING>
    - <SEAM NAME="WELD" ID="S_000001" SEAM_TYPE="DHV" A="3">
      - <CONTOUR>
        - <POINT Z="300" Y="371" X="3005">
          <FACE_REF Z="0" Y="-1" X="0" PART_ID="PA_000001"/>
          <FACE_REF Z="0" Y="0" X="1" PART_ID="PA_000002"/>
        </POINT>
        - <POINT Z="185.5" Y="371" X="3005">
          <FACE_REF Z="0" Y="-1" X="0" PART_ID="PA_000001"/>
          <FACE_REF Z="0" Y="0" X="1" PART_ID="PA_000002"/>
        </POINT>
      </CONTOUR>
    </SEAM>
  </WELDING>
</PROCESS>
```

