

# TEKLA BASECAMP

Four Units

AUG. 27 - 29

2  
0  
1  
9

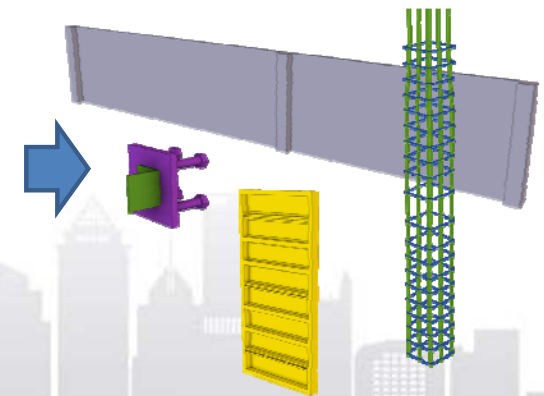
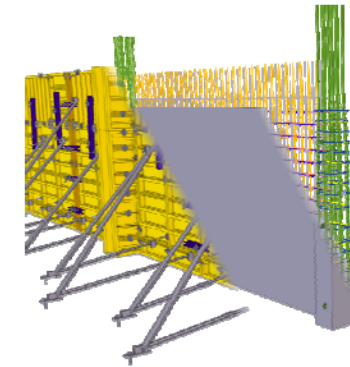


# Pour Units in Tekla Structures: Agenda

- Pour Functionality review
- Using Pour Units in Tekla Structures
  - Modeling and assigning to pour units
  - Filter Examples
  - Using in Organizer
  - Connectivity with Drawings
  - Exporting (IFC, Trimble Connect)

## What you need to know about Pour Units

- 'Assembly' type structure
- Automatically or manually add (see ribbon, calculate pour units)
  - Reinforcement, such as single reinforcing bars, bar groups, reinforcement meshes and strands
  - Assemblies (for example, embeds)
  - Sub-assemblies (for example, embeds in cast-in-place cast units)
  - Bolts (for example, anchor bolts and shear studs)
  - Precast cast units
  - Surfaces added to the pour object
- **Pour units will override cast units**
- Reset Pours Units
  - Reset all pour unit relations
  - Reset all manually assigned pour unit relations
  - Reset all pour unit relations except manual assignments
- Organizer categories need to look at highest level in assembly



Demonstration of Pour units in Tekla Structures

# Pours units in Tekla Structures (Live)

