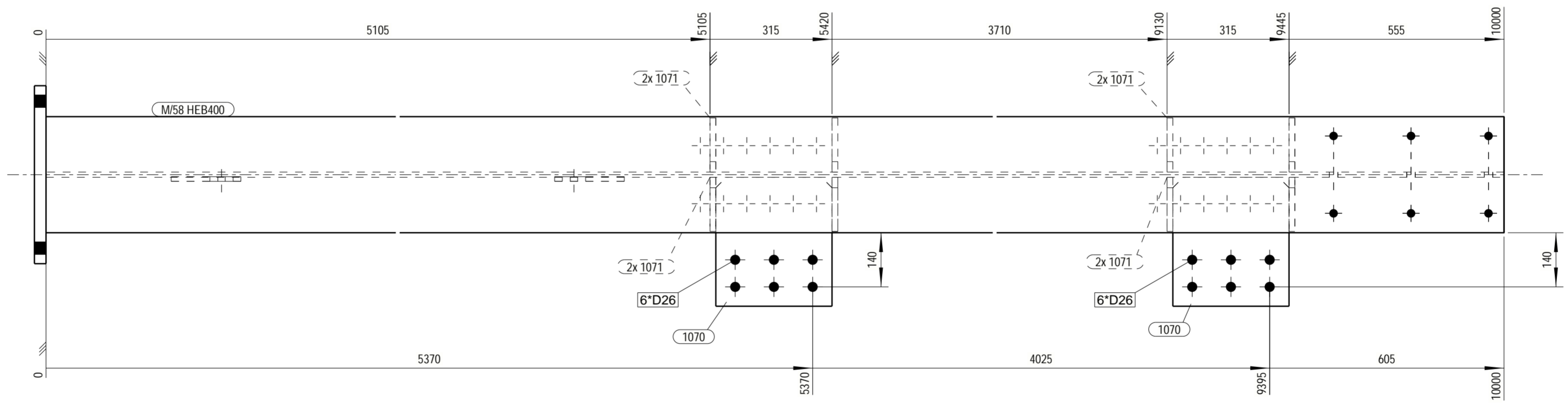
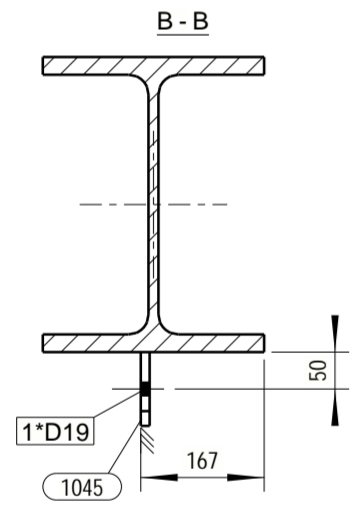
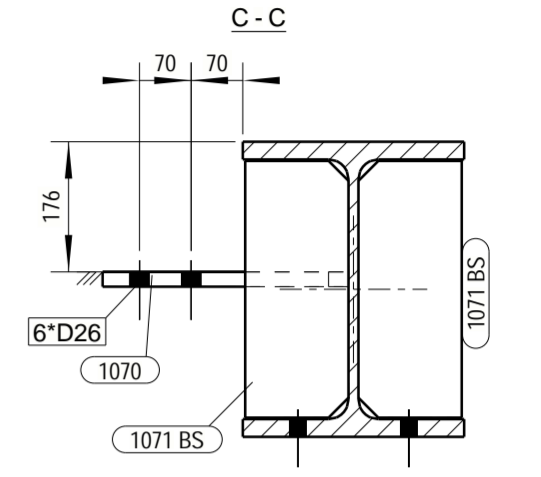
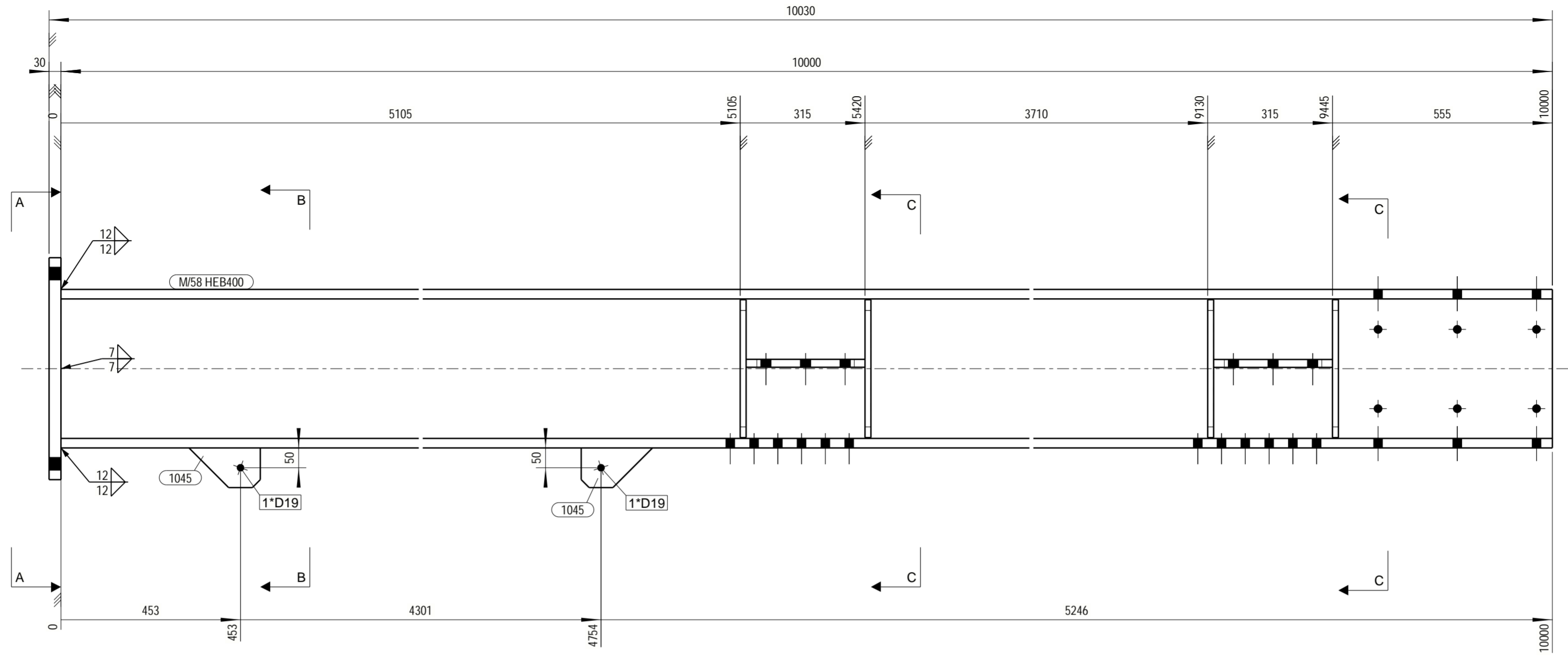
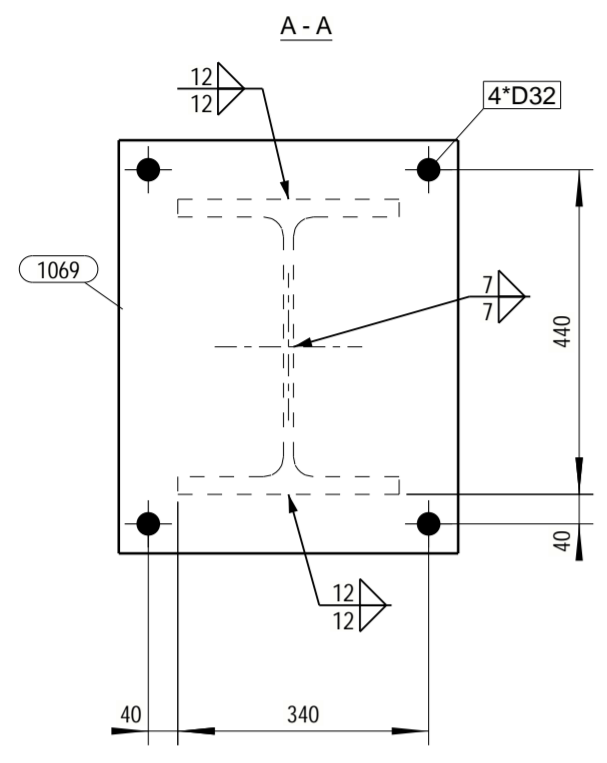


GRID LOCATION	
C/54	K/6



C/54 No 1 COLUMN

**GENERAL NOTES:** ALL HOLES ARE 22.0 mm UNLESS NOTED  
ALL WELDS ARE 6.5 mm F.W UNLESS NOTED

**MATERIAL LIST FOR ASSEMBLY MK'D** C/54 1 No. Required

Mark	Profile	Material	No.	Length	Area	Weight
M/58	HEB400	S355J2G3	1	10000	19.3	1552.7
1045	PL12*100	S235JR	2	180	0.0	1.2
1069	PL30*460	S355J2G3	1	560	0.6	60.7
1070	PL20*300	S355J2G3	2	333	0.2	15.6
1071	PL15*140	S355J2G3	8	348	0.1	5.7
Total					21.2	1692.2

1	A	Approved for Construction	Smith	Grey	11.03.2021
No	REV MARK	REVISION DESCRIPTION	CREATED	APPROVED	REV. DATE
DRAWING TITLE		MAIN COLUMN			
CONTRACT		Tekla Corporation			
MODELLED BY		ISSUED			
CONTRACT NO		1	SCALE 1:10		
DRAWING No		[C.54]	REVISION No.		1

PHASE	QUANTITY
1	1



A2