



# Install and license Tekla Structures Tekla Structures 2026

March 2026

©2026 Trimble Inc. and affiliates



# Contents

<b>1</b>	<b>Tekla Structures 2026 hardware recommendations.....</b>	<b>5</b>
1.1	Operating system requirements.....	5
1.2	Recommended hardware for Tekla Structures workstations.....	5
1.3	Graphics card configuration.....	6
1.4	Further tools to help you choose Tekla Structures workstation hardware.....	7
1.5	Requirements for connecting to Tekla Online services.....	7
1.6	Printers.....	7
1.7	Additional necessary software components.....	7
<b>2</b>	<b>Using your Trimble Identity with Tekla Structures.....</b>	<b>9</b>
<b>3</b>	<b>Installation and licensing workflow.....</b>	<b>10</b>
3.1	Tekla Structures subscriptions.....	10
3.2	If you manage your own installation of Tekla Structures.....	11
3.3	If someone manages Tekla Structures for you.....	13
3.4	If you manage Tekla Structures for other users.....	13
<b>4</b>	<b>Install Tekla Structures.....</b>	<b>15</b>
4.1	Install the Tekla Structures app.....	15
4.2	Install Tekla Structures environments.....	16
4.3	Next steps after Tekla Structures installation.....	17
4.4	Tekla Structures installation folders.....	17
<b>5</b>	<b>Install Tekla Structures service packs.....</b>	<b>19</b>
5.1	Install a Tekla Structures service pack.....	19
5.2	Revert to an earlier Tekla Structures service pack.....	20
<b>6</b>	<b>Upgrade Tekla Structures to a new version.....</b>	<b>22</b>
6.1	Copy personal settings to a new Tekla Structures version.....	23
6.2	Transfer customized information to a new Tekla Structures version.....	24
<b>7</b>	<b>Use Tekla Structures on different computers.....</b>	<b>25</b>
7.1	Release your Tekla Structures subscription license.....	25
<b>8</b>	<b>Work offline with a Tekla Structures subscription.....</b>	<b>27</b>
8.1	Use Tekla Structures offline.....	27

<b>8.2</b>	<b>If the connection to the Tekla subscription service is lost.....</b>	<b>28</b>
<b>9</b>	<b>Uninstall Tekla Structures.....</b>	<b>29</b>
<b>9.1</b>	<b>Uninstall Tekla Structures.....</b>	<b>29</b>
<b>10</b>	<b>Disclaimer.....</b>	<b>30</b>



# 1 Tekla Structures 2026 hardware recommendations

## 1.1 Operating system requirements

Tekla Structures 2026 runs on the following operating systems:

- Windows 11 (64-bit)

Other operating systems are not supported. Tekla Structures does not support Windows ARM.

You can use Tekla Structures with application and desktop virtualization. For more information, visit [Trimble User Assistance](#) online.

## 1.2 Recommended hardware for Tekla Structures workstations

These hardware recommendations are based on tested configurations for Tekla Structures. You can use other configurations if they are more optimal for your intended use.

Various comparisons are available on the internet to compare other hardware to our recommendations. For example, see these comparisons [for GPUs](#) and [for CPUs](#).

Before purchasing computers for Tekla Structures users, test and verify the configuration first with one or two computers.

This table presents two different hardware configurations. The recommendations are mainly for desktop computers, but the same guidelines can also be applied when purchasing laptops.

	<b>Recommendation</b>	<b>Best performance</b>
Operating system	Windows 11 (64-bit)	Windows 11 (64 bit)

	<b>Recommendation</b>	<b>Best performance</b>
Memory	16+ GB	32+ GB
Hard disk	1 TB, SSD	2TB, PCIe NVMe M.2 SSD
Processor	Intel® Core™ i7 CPU, or equivalent AMD	High end Intel® Core™ i9 CPU, or equivalent AMD
Graphics card*	Two monitor support, such as NVIDIA GeForce RTX 4060/4070	Two monitor support, such as RTX 54000 -series (5080/5090) or newer
Monitors	Two 27 inch 2560x1440	43 inch 4K or two 30 inch 2560x1600
Mouse**	3-button wheel mouse	Cordless 3-button wheel mouse and a 3Dconnexion SpacePilot
Backup equipment	External hard drive	External hard drive with scheduled backups
Network adapter	100 Mbit/s IPv4 or IPv6	1 Gbit/s IPv4 or IPv6

*\*Tekla Structures rendering can use DirectX or OpenGL technology. DirectX rendering mode is better optimized for modern graphics cards. Our recommendations are based on testing of the NVIDIA graphics processor. Other graphics cards might also be suitable, but they have not been extensively tested.*

*\*\*A 3-button wheel mouse is always required to be able to finish some commands, and to zoom, pan, and rotate. Tekla Structures also supports using 3D mice provided by 3Dconnexion together with a regular mouse to enhance zooming, panning, and rotating. To use a 3D mouse, install the 3Dconnexion Device extension from [Tekla Warehouse](#).*

## 1.3 Graphics card configuration

Ensure that your graphics card is set up to use a high performance profile with Tekla Structures.

You can check and assign the profile in the configuration tool provided by the graphics card manufacturer, or in [Windows settings](#). The graphics card configuration is especially important on laptop computers, which might be configured to maximize power saving. By default, many systems use a less powerful integrated graphics processor for Tekla Structures instead of the more powerful dedicated graphics card unless you change the setting.

In addition to the main Tekla Structures software, other software components also affect how the 3D models are drawn on your computer:

Your computer uses the standard drivers provided by the graphics card manufacturer when drawing the 3D view in Tekla Structures. We recommend

that you regularly check for updates to the graphics drivers from the manufacturer's website.

Before upgrading the drivers, test the driver version to ensure that the update does not introduce problems in the 3D views in Tekla Structures.

## 1.4 Further tools to help you choose Tekla Structures workstation hardware

Join the discussion at [Tekla Discussion Forum > Tekla Structures Forums > Hardware & operating system](#) to exchange experiences with other users.

You can [install TeklaMark from Tekla Warehouse](#) to test the graphics performance of your setup and compare it to statistics from other users. For more information and statistics, see the [TeklaMark support article](#).

## 1.5 Requirements for connecting to Tekla Online services

Tekla Online services provide comprehensive learning and support resources, software installation package downloads, cloud-based sharing, and various add-on tools that enhance your use of the software.

To ensure full access, follow the [requirements for connecting to Tekla Online services](#).

## 1.6 Printers

Tekla Structures uses the standard Windows printer drivers provided by the manufacturer of the printer.

You can install the most recent driver from the manufacturer's website.

## 1.7 Additional necessary software components

Tekla Structures requires these redistributable packages.

- Microsoft .NET Framework 4.8
- Microsoft Visual C++ 2013 Redistributable (x64) 12.0.40664
- Microsoft Visual C++ 2015-2019 Redistributable (x64) 14.32.31326
- Microsoft Edge WebView2 Runtime Redistributable (x64) 106.0.1370.42

If these redistributable packages or newer versions of them are not already installed on your computer, they are automatically installed during the Tekla Structures software installation.

If your company installs Tekla Structures centrally using `.msi` packages, it might be necessary to download the required redistributable components from Microsoft's web site and install them separately.

# 2 Using your Trimble Identity with Tekla Structures

You need a Trimble Identity to download Tekla Structures and to use your subscriptions.

For more information, see [Create your Trimble Identity](#).

# 3 Installation and licensing workflow

The workflows on this page give an overview of the processes for installing Tekla Structures, depending on who manages the Tekla Structures installation.

For detailed installation instructions, see [Install Tekla Structures \(page 15\)](#).

To use Tekla Structures, you must have a Tekla Structures subscription or a legacy on-premises license.

For information about subscription costs and how to get a subscription, contact your local [Trimble office or reseller](#).

If you use legacy on-premises licensing, additional configuration is required. For details, see [Tekla Structures legacy on-premises licensing](#).

## 3.1 Tekla Structures subscriptions

A Tekla Structures subscription is connected to your Trimble Identity. The subscription is delivered to the [Tekla Online Admin Tool](#), where your company's administrators can assign the subscriptions to individual users. When Tekla Structures starts, you sign in to Trimble's cloud to reserve your subscription license seat.

If you do not yet have a Tekla Structures subscription as a commercial user, you can start a free trial. For more information, see [Get started with your Tekla Structures trial](#). To start your free trial, follow the steps on the [free trial Download](#) page.

For a free Tekla Student subscription to try out and learn Tekla Structures, visit the [Tekla Campus](#) site. Using a Tekla Student subscription for any commercial work is prohibited.

## 3.2 If you manage your own installation of Tekla Structures

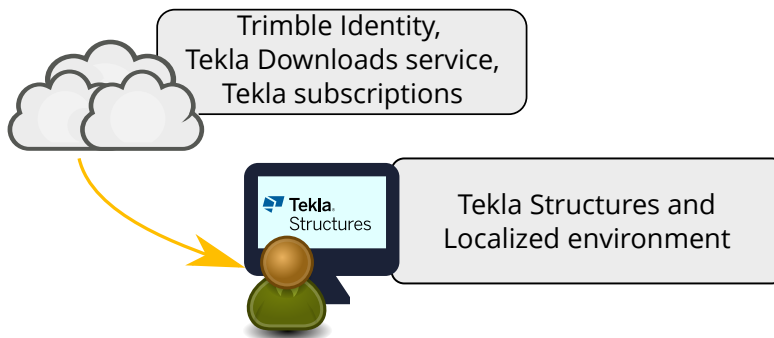
If no one else manages Tekla Structures for you, create a Trimble Identity, and download and install Tekla Structures.

---

**NOTE** To ensure a good experience using Tekla Structures, ensure that your computer meets the [Tekla Structures 2026 hardware recommendations \(page 5\)](#).

---

To start a free trial of Tekla Structures, follow the steps on the [Free Trial Download](#) page.



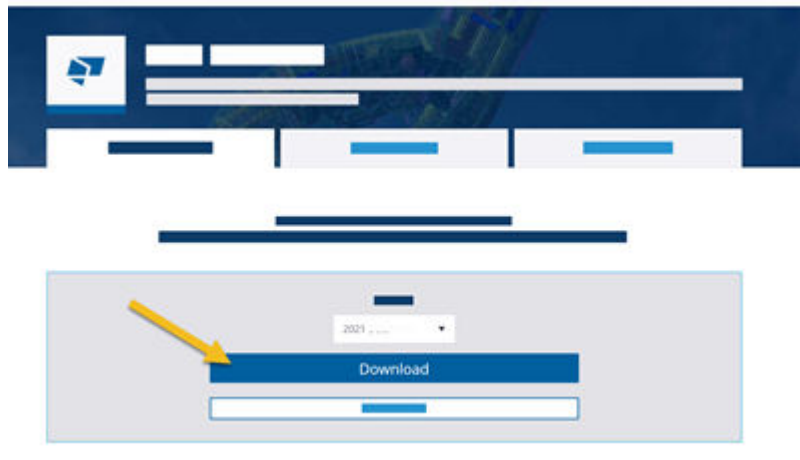
If you manage your own installation of Tekla Structures, your installation follows this process:

1. [Create your Trimble Identity](#), complete your profile details, and join your company's account as an employee.
  - If you have received an email invitation from Trimble to create a Trimble Identity, follow the instructions in the email to create your account to ensure that you have the correct access rights.

If you want to use a different email address for this account, create the account using your invitation first, then change the email address.
  - If you have not received an invitation, [create a new Trimble Identity](#) to download the software.

To have access to your Tekla subscriptions, your company's account administrator must add you to your company's account as an employee.
2. Download the installation package for Tekla Structures and at least one of the Tekla Structures environments from [Trimble Downloads](#).

For a guided experience that ensures that you have all necessary files, click **Download**.



3. Install the software.
  - a. Run the Tekla Structures installer and ensure that the installation finishes successfully.

See [Install the Tekla Structures app \(page 15\)](#) for detailed instructions.
  - b. Run one or more Tekla Structures environment installers.

See [Install Tekla Structures Environments \(page 16\)](#) for detailed instructions.

After you install one environment, you can run other environment installers to install more environments. You can install as many environments as you want.

If you do not install any environments, only the Blank environment is available. Do not use the Blank environment to edit models or drawings. The Blank environment is only a basis for building your own fully customized environment and does not contain all the tools and configurations that you need to work efficiently.

After you have completed the Tekla Structures and environment installation, you can now start Tekla Structures and sign in.

After you sign in, you can select from the configurations that have been activated for you. Subscriptions can be from the company account where you are an employee, or assigned to you as a member of some other company account. If you purchase your own subscriptions, you can manage them in the [Tekla Online Admin Tool](#).

For more information about how to manage Tekla subscriptions in the Tekla Online Admin Tool, see the [Tekla Online Admin Tool](#) product guide in Trimble User Assistance.

Start learning how to use Tekla Structures:

- Find the **Instructor** side pane on the right-hand side of the Tekla Structures modeling or drawings view to see instructions for each command as you activate them.
- [Take a free online eLearning course.](#)

### 3.3 If someone manages Tekla Structures for you

If your company has an IT administrator or main user who manages Tekla Structures for other users, follow their instructions for installation and licensing.

You might still need to consider the following points:

- You need a Trimble Identity to access Tekla online services and subscriptions. If your company's administrator has not invited you to your company's account as an employee and assigned subscriptions to you, ask to join. See [Create your Trimble Identity for Tekla Products](#).
- Usually, your company's Tekla Structures administrator prepares a customized installation package for you or installs the software for you. Ask your administrator for instructions.

Start learning how to use Tekla Structures:

- Find the **Instructor** side pane on the right-hand side of the Tekla Structures modeling or drawings view to see instructions for each command as you activate them.
- [Take a free online eLearning course.](#)

### 3.4 If you manage Tekla Structures for other users

For detailed administrator instructions, see the Manage Tekla Structures PDF.

1. Ensure that you have set up [your Trimble Identity](#).
2. [Install \(page 15\)](#) and start customizing it for your company's users.
3. If you manage Tekla Structures users and subscriptions, add users to your company's account as employees to give them access to your company's subscriptions and services.

For more information about how to manage Tekla subscriptions in the Tekla Online Admin Tool, see the [Tekla Online Admin Tool](#) product guide in Trimble User Assistance.

4. Deploy to your company's users.

5. Continue developing your company's customizations and distribute them as needed.

# 4 Install Tekla Structures

To use Tekla Structures, install the Tekla Structures app and the Tekla Structures environments that you want to use.

Installation packages are available for download in [Trimble Downloads](#). You can directly install the latest service pack.

For installation prerequisites and recommended hardware, see [Tekla Structures 2026 hardware recommendations \(page 5\)](#).

Tekla Structures service packs include the latest new features, and improvements and fixes to existing features. You do not need to separately install the related Tekla Structures version before installing a Tekla Structures service pack. For more information, see [Install Tekla Structures service packs \(page 19\)](#).

Tekla Structures extensions are not part of the Tekla Structures product release. Extensions are available for download in [Tekla Warehouse](#), and you can install them separately.

If you use legacy on-premises licensing, additional configuration is required. For details, see [Tekla Structures on-premises licensing](#).

If you have a Tekla Structures subscription, the subscription is connected to your Trimble Identity, and assigned to you by your company's administrators. You only need to install and start Tekla Structures, and sign in to use your Tekla Structures subscription.

## 4.1 Install the Tekla Structures app

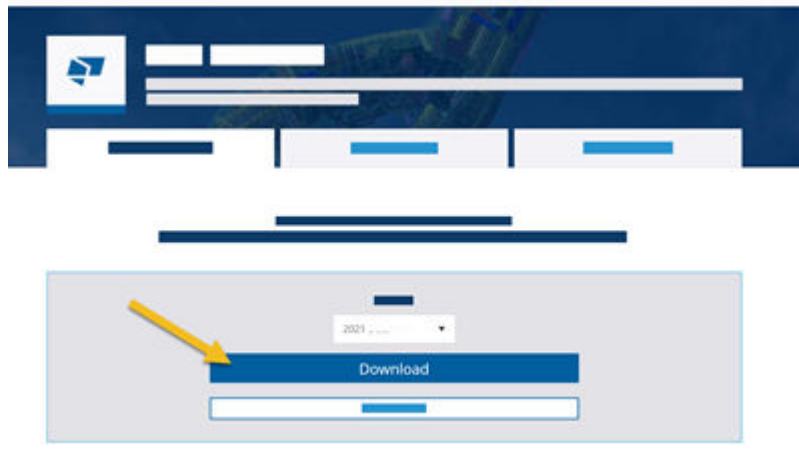
---

**NOTE** You must have administrator rights on the computer where you are installing the Tekla Structures app.

---

1. Download the installation file from [Trimble Downloads](#) to your computer.

At the site, click **Download** for a guided experience that ensures that you have all necessary files.



2. Double-click the installation file to run the installation.
3. Follow the steps in the installation wizard to complete the installation.  
You can select the installation folder and the model folder.

You can also optionally install the Default environment as part of the Tekla Structures installation. The Default environment includes generic content that has not been localized for any region. If you are not sure which environment to install, you can install the Default environment to get started. You can later install other environments..

Install one or more Tekla Structures environments.

## 4.2 Install Tekla Structures environments

Environments are region or company-specific settings and information that are predefined in Tekla Structures, or that are defined by the user. We recommend that you install at least one environment after you install the Tekla Structures app.

You can later install other environments. You can install as many environments as you want.

The location of the environment installation folder depends on where you have installed the Tekla Structures app. You cannot change the environment installation folder in the installation wizard.

1. Download the environment installation files from [Trimble Downloads](#) to your computer.
2. Double-click the installation file to run the installation.
3. Follow the steps in the installation wizard to complete the installation.

## 4.3 Next steps after Tekla Structures installation

- Start .
- Start learning how to use Tekla Structures:
  - Find the **Instructor** side pane on the right-hand side of the Tekla Structures modeling or drawings view to see instructions for each command as you activate them.
  - [Take one of our free online elearning courses.](#)

## 4.4 Tekla Structures installation folders

By default, the Tekla Structures app, environments, and user settings are installed in separate folders.

You can select the installation folder for the Tekla Structures app in the installation wizard. The locations of the installation folders for environments and user settings are automatically selected based on where you have installed the app.

By default, the files are installed in the following folders:

- The Tekla Structures app is installed in the `\Program Files\Tekla Structures\<>version>\` folder.

When Tekla Structures is installed in the `Program Files` folder, configuration files are installed separately in the hidden `Program Data` folder.

- Environments are installed in the hidden `\ProgramData\Trimble\Tekla Structures\<>version>\` folder.
- User settings are always installed in the `\Users\<>username>\AppData\Local\Trimble\Tekla Structures\<>version>\` folder, regardless of where the Tekla Structures app is installed.

Installation in the `Program Files` folder requires administrator rights on the computer. If it is not possible to install Tekla Structures with administrator rights, we recommend that you install Tekla Structures in a normal file folder on the computer, such as `C:\TeklaStructures`.

When you install Tekla Structures in a normal file folder, all files except for user settings are installed in that folder. Installation in a normal file folder can also be useful if you manage your own installation of Tekla Structures and you want to customize Tekla Structures.

When you install a new Tekla Structures version, make sure that the installation folder does not contain any files from other Tekla Structures

versions. Removing files from other Tekla Structures versions ensures that you get all the files that are included in the installation package.

When you are installing a service pack, you cannot select the installation folder if the related Tekla Structures version or a previous service pack is already installed. The service pack is always installed in the same folder as the related Tekla Structures version or the previous service pack.

Installing the new service pack automatically removes old files from the related Tekla Structures version or the previous service pack before copying the new files. If you have your own files in the installation folder, these files remain unchanged in the folder.

When you have installed the software and the environments, you can check the installation paths in the Windows **Control Panel**.

---

**NOTE** You might need to install Tekla Structures in a folder that has a name in a non-Unicode language such as Chinese, Japanese, Korean, or Russian. If your Windows installation does not match the non-Unicode language, you must change the language in XS\_STD\_LOCALE and the Windows system locale in the Windows **Control Panel** to the same language so that Tekla Structures can work normally.

---

# 5 Install Tekla Structures service packs

Service packs contain fixes to problems found after a main version release. Service packs can also include new features and improvements that change existing features. We recommend that all users install the latest service pack.

Service pack software installation files are stand-alone installers that contain the main software version content and all changes made in previous service packs. You do not need to separately install the related Tekla Structures version or any previous service packs. For example, you can install service pack 2 without installing service pack 1. If you have the related Tekla Structures version or a previous service pack installed on your computer, you do not need to remove it before installing a new service pack.

We recommend that you also check for updates to all standard Tekla Structures environments that you are using. Installing the latest version ensures that the environments work correctly with the new service pack.

You can find the service pack software and environment installation files in [Trimble Downloads](#). To find the service pack files for your version, select the version and click **All downloads**. Service packs are available for all users with a valid maintenance agreement.

---

**NOTE** You must have administrator rights in Windows to install the software on your computer.

---

## 5.1 Install a Tekla Structures service pack

You can install a service pack to update a Tekla Structures version or a previous service pack.

1. Install the Tekla Structures service pack software.
  - a. Download the service pack software installation file from [Trimble Downloads](#) to your computer.

- b. Double-click the installation file to run the installation.
- c. Follow the steps in the installation wizard to complete the installation.

If you have the related Tekla Structures version or a previous service pack already installed, you cannot select the installation folder. The service pack will be installed to the same folder as the version that you are updating.

If you do not have the related Tekla Structures version or a previous service pack installed, you can select the installation folder and the model folder.

2. Install updated versions of the environments that you use if updates are available.

The location of the environment installation folder depends on where you have installed the software. You cannot select the environment installation folder in the installation wizard.

You do not need to remove any environments. Installing a newer version of an environment automatically upgrades the older version of that environment.

- a. Download the needed environment installation files from [Trimble Downloads](#) to your computer.
- b. Double-click the installation file to run the installation.
- c. Follow the steps in the installation wizard to complete the installation.

## 5.2 Revert to an earlier Tekla Structures service pack

We recommend that you use the latest Tekla Structures service pack. In certain situations, you might need to revert to an earlier Tekla Structures service pack, or the related Tekla Structures version, even though you are already using a newer service pack.

---

**TIP** To easily revert to the previous installed service pack, go to Windows **Control Panel > Recovery > Open System Restore**. Search for the service pack version in the list and revert back to it.

---

If you want to use an earlier service pack than the previous installed service pack, follow these steps:

1. Uninstall the current Tekla Structures service pack software in Windows **Control Panel**.
2. Uninstall the related environments in Windows **Control Panel**.
3. Install the Tekla Structures service pack software.
  - a. Download the software installation file of the service pack from [Trimble Downloads](#).

- b. Double-click the installation file to run the installation.
    - c. Follow the steps in the installation wizard to complete the installation.
  4. Install the Tekla Structures environments that you use.  
The latest environments are in [Trimble Downloads](#).
    - a. Download the environment installation files related to the service pack that you have installed.
    - b. Double-click the installation file to run the installation.
    - c. Follow the steps in the installation wizard to complete the installation.

# 6 Upgrade Tekla Structures to a new version

You can have many Tekla Structures versions on your computer. When you install a new version, you do not need to uninstall the older versions and you can keep using them.

Service packs are cumulative updates. They replace the previous service pack installation for the same Tekla Structures version.

---

**NOTE** We recommend that you complete any models you are already working on using your current version of Tekla Structures. After you save a model in the new version, you can no longer open it in previous versions.

---

You can download the installation packages from the [Trimble Downloads](#) service.

Complete the upgrade in this general order. For detailed instructions, follow the links in the text.

1. If you have legacy on-premises licenses, renew your licenses.
  - a. If a new version of the Tekla on-premises license server is available, [update the Tekla on-premises license server](#). The updated version replaces the existing version that you have installed.
  - b. [Renew your legacy on-premises licenses](#).

The renewed licenses can be used with the version indicated on the license and any previous versions that are compatible with your installed license server version.

2. [Install Tekla Structures \(page 15\)](#).

You can have many Tekla Structures versions and environments on your computer. When you install and start using a new version, you do not need to uninstall the older versions.

3. [Copy your personal settings to the new version \(page 23\)](#).

You can use the [Migration Wizard \(page 23\)](#) tool to copy some personal settings to the new version. You can skip the copying if you do not want to

copy the settings, or if you want to manually copy the settings from some other Tekla Structures version.

4. [Transfer customized information to the new version \(page 24\)](#).

In the new Tekla Structures version, you can use the information you have customized in the previous version.

We strongly recommend that you create project and firm folders, and store the files you customize in these folders. Tekla Structures does not replace the files in project and firm folders when you install a new version.

If you do not use project and firm folders, you must transfer the customized information to the new version manually.

## 6.1 Copy personal settings to a new Tekla Structures version

You can copy some personal settings from an older Tekla Structures version to a newer Tekla Structures version using the Migration Wizard tool.

The Migration Wizard starts automatically when you start a new version of Tekla Structures for the first time.

The Migration Wizard shows the version number from which the settings are copied and the version number to which the settings are copied. You can select which settings are copied. You can copy any of the following settings and values:

- .tsep extensions that you imported to the **Applications & components** catalog in the previous version
- Settings files:
  - User files
  - Option files
  - Custom keyboard shortcuts
  - Customized ribbons
- Registry values, such as:
  - Toolbars
  - Dialogs
  - Actions
  - General options
  - User menu and work areas

1. Start the new Tekla Structures version or start the Migration Wizard manually.

To start the Migration Wizard manually, double-click the `MigrationWizard.exe` file in the `..\Tekla Structures\<>version>\bin\applications\Tekla\Migrations` folder.

2. In the Migration Wizard, click **Next** to start copying the settings.
3. Select the settings that you want to copy, then click **Next**.
4. Check that you have selected the correct settings.
5. Click **Copy**.

If you copied `.tsep` extensions, restart Tekla Structures to install the extensions.

### See also

[Upgrade Tekla Structures to a new version \(page 22\)](#)

## 6.2 Transfer customized information to a new Tekla Structures version

You can transfer customized information from a previous Tekla Structures version to the new Tekla Structures version.

If your company uses project and firm folders to store customized files for models, the files are automatically transferred to the new Tekla Structures version.

If your company does not use project and firm folders, you must manually transfer the files to the new Tekla Structures version. For more information, see [Reuse settings from previous projects](#) or [.tsep](#).

You can also copy some information automatically to the new version using the [Migration Wizard \(page 23\)](#) tool.

# 7

## Use Tekla Structures on different computers

Your Tekla Structures subscription is connected to your Trimble Identity, not to a specific computer. You can sign in to your Trimble Identity to use Tekla Structures on any computer, but you can only use it on one computer at a time.

---

**NOTE** If you have a Tekla Structures trial subscription, you can only use Tekla Structures on the computer where you activated the subscription.

---

If your Tekla Structures subscription license is reserved on the computer where you are currently using Tekla Structures, you must release your subscription license before you can use Tekla Structures on a different computer.

If you frequently use Tekla Structures on different computers, we recommend that you set the value of the `XS_DEFAULT_KEEP_ONLINE_LICENSE_CHECKBOX` advanced option to `FALSE`. This way, your subscription license is not automatically kept reserved when you close Tekla Structures.

### 7.1 Release your Tekla Structures subscription license

To use Tekla Structures on a different computer, release your subscription license on the computer where it is currently reserved.

To release your Tekla Structures subscription license, you must be able to access the computer where it is currently reserved. If you cannot access the computer where your subscription license is currently reserved, contact your local support. For a list of offices and resellers together with their contact information, see [Offices and resellers](#).

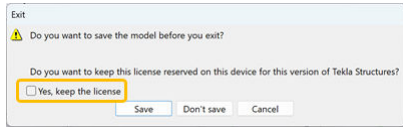
---

**NOTE** If you use more than one version of Tekla Structures, you must release your subscription license in all versions where it is reserved.

---

1. Start Tekla Structures, then open a model.

2. Close Tekla Structures and clear the **Yes, keep the license** checkbox in the **Exit** dialog.



For instructions to release your subscription license in other Tekla Structures versions, see the article [Subscription license release issues in Tekla Structures including the “All in Use” Message](#).

You can now start Tekla Structures on a different computer.

# 8

## Work offline with a Tekla Structures subscription

You can keep your Tekla Structures subscription license reserved if you want to use Tekla Structures offline.

---

**NOTE** The information on this page does not apply to on-premises Diamond, Graphite, or Carbon subscriptions.

---

You can only use Tekla Structures on one computer at a time with the same subscription.

You can use Tekla Structures offline for a maximum of 3 days. At the end of the offline time, you can no longer use Tekla Structures offline. If you have a model open, you can save it before closing Tekla Structures.

### 8.1 Use Tekla Structures offline

1. Start Tekla Structures, then open a model.
2. Close Tekla Structures.
3. In the closing confirmation message dialog, ensure that **Yes, keep the license** is selected.

Your Tekla Structures subscription license is reserved on your computer. You can use Tekla Structures offline for a maximum of 3 days.

The upper right corner of the Tekla Structures application window shows a clock symbol next to your username. The clock symbol indicates that you are using Tekla Structures offline.

## 8.2 If the connection to the Tekla subscription service is lost

If the connection to the Tekla subscription service is lost, a notification is shown. Tekla Structures continues to function in offline mode for the amount of time shown in the notification.

The maximum offline time is 3 days.

The possible cause might be one of the following:

- No internet connection is available, or there are other connectivity problems in your network.
- Tekla subscription service is experiencing a disruption. For more information, check the [status page](#).
- Trimble Identity service is experiencing a disruption. For more information, check the [status page](#).

Tekla Structures tries to reconnect automatically. You can also try to reconnect manually by clicking **Try reconnecting now**. If the button is dimmed, it is not possible to reconnect at the moment.

- The button might be dimmed if your subscription license is reserved. Release your subscription license and start Tekla Structures again.
- Otherwise, wait until the button is available and try again.

# 9 Uninstall Tekla Structures

When you no longer need a version of Tekla Structures or its related components, you can uninstall it to save space on the computer.

---

**TIP** You can have many Tekla Structures versions on your computer. It is not necessary to uninstall old Tekla Structures versions when you install a new Tekla Structures version.

---

Before you uninstall, make sure that you release any subscription licenses that are reserved when you exit Tekla Structures.

## 9.1 Uninstall Tekla Structures

You can optionally uninstall Tekla Structures versions that you no longer use to save space on the computer.

You can also uninstall Tekla Structures environments separately from the main Tekla Structures app.

1. Go to the Windows **Control Panel** --> **Programs** --> **Programs and Features**.
2. Select a component, click **Uninstall** and follow the prompts. Follow this order:
  - a. Uninstall the Tekla Structures environments.
  - b. Uninstall the main Tekla Structures app.
  - c. If installed, uninstall the offline help package.
  - d. If needed, delete the additional files or extensions related to Tekla Structures manually from the [installation folders \(page 15\)](#).
3. If you no longer want to run any version of Tekla Structures on the computer, uninstall the Tekla Warehouse service and content components.

# 10 Disclaimer

© 2026 Trimble Inc. and affiliates. All rights reserved.

Use of the Software and of this Software Manual are governed by a License Agreement which determines whether you are an authorized user of the Software and the Software Manual. The warranties and disclaimers set forth in the License Agreement apply to the Software and the Software Manual. Neither the Trimble entity granting the license nor any of its affiliates assume responsibility that the text is free of technical inaccuracies or typographical errors. The right to make changes and additions to this manual is reserved.

Trimble and certain product names are registered trademarks of Trimble Inc. in the United States, the European Union and other countries and may have similar statutory protections. Trademarks of third parties are not mentioned in this Manual to suggest an affiliation with or endorsement by their owners.

Elements of the software described in this Manual may be the subject of pending patent applications in the European Union and/or other countries.

Portions of this software:

Portions of this software make use of Open CASCADE Technology software. Open Cascade Express Mesh Copyright © 2019 OPEN CASCADE S.A.S. All rights reserved.

FLY SDK - CAD SDK © 2012 VisualIntegrity™. All rights reserved.

This application incorporates Open Design Alliance software pursuant to a license agreement with Open Design Alliance. Open Design Alliance Copyright © 2002–2020 by Open Design Alliance. All rights reserved.

CADhatch.com © 2017. All rights reserved.

RapidXml C++ library © All rights reserved.

FlexNet Publisher © 2016 Flexera Software LLC. All rights reserved. This product contains proprietary and confidential technology, information and creative works owned by Flexera Software LLC and its licensors, if any. Any use, copying, publication, distribution, display, modification, or transmission of such technology in whole or in part in any form or by any means without the prior express written permission of Flexera Software LLC is strictly prohibited. Except where expressly provided by Flexera Software LLC

in writing, possession of this technology shall not be construed to confer any license or rights under any Flexera Software LLC intellectual property rights, whether by estoppel, implication, or otherwise.

To see the third party open source software licenses, go to Tekla Structures, click **File menu** --> **Help** --> **About Tekla Structures** --> **3rd party licenses** and then click the option.

# Index

<b>C</b>		
copying personal settings		
customized ribbons.....	23	
keyboard shortcuts.....	23	
<b>E</b>		
environment installation.....	15	
<b>H</b>		
hardware recommendations.....	5	
<b>I</b>		
installation.....	15	
installation and licensing		
procedure.....	10	
subscriptions.....	10	
installing.....	29	
installing Tekla Structures		
service packs.....	19	
installing Tekla Structures.....	10	
copying personal settings.....	23	
Migration Wizard.....	22,23	
transferring customized files.....	24	
upgrading.....	22,24	
upgrading Tekla Structures.....	23	
<b>L</b>		
licensing Tekla Structures.....	10	
<b>M</b>		
Migration Wizard		
customized ribbons.....	23	
	keyboard shortcuts.....	23
<b>O</b>		
offline use of Tekla Structures.....	27	
<b>R</b>		
recommendations for hardware.....	5	
<b>S</b>		
service packs.....	19	
service releases.....	15	
subscriptions		
connection lost.....	27	
offline use.....	27	
releasing.....	25	
using on different computers.....	25	
<b>T</b>		
Trimble Identity.....	9	
<b>U</b>		
uninstalling.....	29	
upgrading Tekla Structures.....	23	
upgrading to new version.....	22	